



**27 - 1983**

<https://www.yachtadvert.com/fr/1166-moody-27.html>

**11 512 â,- ttc**



## Général

Année : 1983

Longueur : 8,23 m

Tirant d'eau : 0,00 m

Radeau : Non

Leasing en cours : Non

Constructeur : Moody

Matériau : GRP Poly

Largeur : 2,74 m

Quille : Quille ailette

Région : Marchwood, Royaume-Uni

## Moteurs

Carburant : Diesel

Puiss. Unit. (CV) : 20

Marque moteur : Beta Marine

Nombre : 1

# Aménagements

Flybridge : Non

Timonerie : Non

---

## électronique

Pilote auto : Non

GPS : Non

VHF : Non

Déssalinisateur : Non

Radar : Non

Sondeur : Non

Traceur de carte : Non

Convertisseur 12/220 : Non

---

## équipement de pont

Hydraulique : Non

Plateforme AR : Non

Taud d'hivernage : Non

Capote de roof : Non

Cockpit en teck : Non

Grand voile sur enrouleur : Non

Passerelle : Non

Bossoirs : Non

Guindeau électrique : Non

Taud cockpit : Non

Pont teck : Non

Génois sur enrouleur : Non

Spinnaker : Non

---

## équipements principaux

Propulseur Arrière : Non

Clim. : Non

Eaux noires : Non

Annexe : Non

Propulseur avant : Non

Groupe élec. : Non

Eau chaude : Non

Flaps : Non

Moteur annexe : Non

---

# électroménager

Congélateur : Non  
Micro-ondes : Non  
Réchaud électrique : Non  
Lave-linge : Non  
Antenne TV : Non  
TV SAT : Non

Glaçons : Non  
Four : Non  
Réchaud gaz : Non  
Chauffage : Non  
Lave-vaisselle : Non  
TV : Non

---

## Divers

**Remarks :**

The Moody 27 is a easily sailed safe cruising yacht. They are a good combination of speed, stability and good accommodation&nbsp; They are ideal for first time boat owners as well as experienced sailors looking for a good coastal cruiser.&nbsp;

'Catspaw' is a ready to sail away Moody 27. She has been well maintained by her current owner who has made various upgrades. She has 5-6 berths, a quarter berth&nbsp; to port, a spacious fore cabin and two settee berths in the saloon. The galley is practical and her separate heads has a sea toilet and sink.

She comes fully equipped including a dinghy with a 2.5hp Suzuki outboard engine, warps, fenders, lines, anchors and more.&nbsp;

She is available for viewing 7 days a week at Marchwood Yacht club.

**Accommodation :</strong>**

5 berths in 2 cabins  
Seating in main saloon with fold out table  
Fully functioning galley  
Heads with sea toilet and sink

**Inventory :</strong>**

10 kg Rocna anchor 30m of 8mm chain (new 2023)  
Bruce kedge anchor  
Water filter  
Winch handles  
Bilge pump handle  
Contest Compass (new 2023)  
Bosuns chair  
Safety lines  
Life belt with automatic light  
Throwing line and mounting bracket  
Red ensign and flag staff  
Engine spares  
Assorted other spares  
Deck brush  
Mooring pickup hook

Boat hook

Various mooring&nbsp;lines and tow rope

Cockpit tent

Dinghy w/ 2.5hp Suzuki outboard and oars

**Mechanical :**

Beta Marine 20hp B-20HE (new 2009)

Gearbox TMC 40 P (new 2022)

3 bladed propeller

Rope cutter

Diesel hot air heating system

Main sail - Slab reefing

Genoa

Storm sail

2X gas bottles

2X electric bilge pump

Manual bilge pump

Cradle for storage at Marchwood Yacht club















www.networkyachtbrokers.com



www.networkyachtbrokers.com



www.networkyachtbrokers.com



www.networkyachtbrokers.com

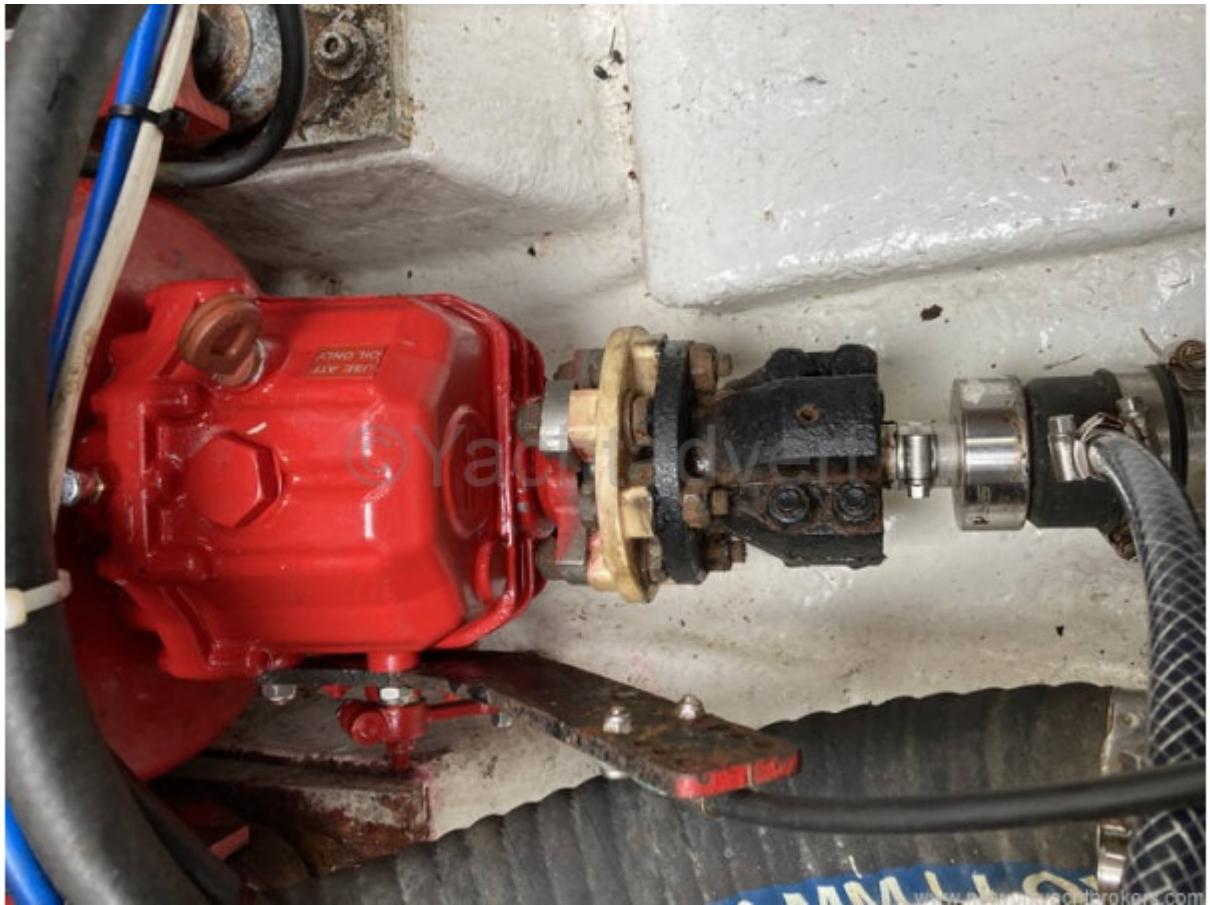


























www.networkyachtbrokers.com



www.networkyachtbrokers.com











