



57 - 2004

<https://www.yachtadvert.com/fr/1223-beneteau-57-owners-version.html>

295 000 EUR ttc



Général

Constructeur : Beneteau
Matériau : GRP Poly
Largeur : 4,88 m
Quille : Quille ailette
Région : Preveza, Grèce

Sous type : Plaisance
Année : 2004
Longueur : 17,68 m
Tirant d'eau : 0,00 m
Radeau : Non
Leasing en cours : Non

Moteurs

Carburant : Diesel
Puiss. Unit. (CV) : 160

Marque moteur : Yanmar
Nombre : 1

Aménagements

Flybridge : Non

Timonerie : Non

électronique

Pilote auto : Non

GPS : Non

VHF : Non

Déssalinisateur : Non

Radar : Non

Sondeur : Non

Traceur de carte : Non

Convertisseur 12/220 : Non

équipement de pont

Hydraulique : Non

Plateforme AR : Non

Taud d'hivernage : Non

Capote de roof : Non

Cockpit en teck : Non

Grand voile sur enrouleur : Non

Passerelle : Non

Bossoirs : Non

Guindeau électrique : Non

Taud cockpit : Non

Pont teck : Non

Génois sur enrouleur : Non

Spinnaker : Non

équipements principaux

Propulseur Arrière : Non

Clim. : Non

Eaux noires : Non

Annexe : Non

Propulseur avant : Non

Groupe élec. : Non

Eau chaude : Non

Flaps : Non

Moteur annexe : Non

électroménager

Congélateur : Non
Micro-ondes : Non
Réchaud électrique : Non
Lave-linge : Non
Antenne TV : Non
TV SAT : Non

Glaçons : Non
Four : Non
Réchaud gaz : Non
Chauffage : Non
Lave-vaisselle : Non
TV : Non

Divers

Remarks :

2004 BENETEAU 57 Designed by Bruce Farr, the Beneteau 57 has long been respected for its blend of performance, comfort, and ocean-going capability. Over the years, it has quietly earned a loyal following among experienced sailors — and more recently, it's enjoying renewed admiration for its build quality, timeless design, and long-legged cruising ability. It stands apart from many modern production yachts thanks to its robust construction, elegant proportions and refined interior layout. This 2004 example is the highly regarded Owner's Version, featuring a full-beam aft stateroom and four cabins in total. She has been privately owned from new, never chartered, and is presented in excellent condition both above and below decks. Over the past two years, her current owner has carried out an extensive and technically sophisticated refit, focused on navigation, electrical systems, water independence and general cruising self-sufficiency — making this yacht a standout example in today's market.

HIGHLIGHTS LISTED BELOW BUT INCLUDED IN FULL SPECS:

- EU VAT Paid
- Always privately owned
- Large owner's aft stateroom
- Low engine hours (2,450)
- Air conditioning throughout
- Starlink media setup
- Extensive battery upgrade
- Generator and bow thruster
- Ready for serious blue water cruising

BROKER'S REMARKS: The Beneteau 57 has earned its reputation as a true blue water cruiser, and this example stands out with a rare combination of luxury, performance, and thoughtful upgrades. She's been meticulously maintained and is exceptionally well-suited to a couple or family looking for a capable and comfortable passage maker. Whether cruising the Mediterranean or planning an ocean crossing, this yacht is ready to go.

RECENT UPDATES:

- New ORCA Core navigation system. Integrated with sensors and autopilot control. Everything you need for an integrated and modern navigation experience on your phone, watch, tablet (iPad, iPhone, Android compatible)
- New Raymarine EV400 Sail Evolution autopilot
- New NMEA 2000 network and SeaTalk/NMEA bridge
- New Raymarine masthead wind transducer and interconnect cable
- New 28.6 kWh Lithium house battery bank (32 x 280Ah EVE cells) for energy freedom
- New REC-BMS battery management system with Victron integration
- New Victron Energy system including:
 - Victron MultiPlus II 24/5000/120-50 Inverter-Charger
 - Victron 24/500 Inverter for Startlink, media server, and TVs
 - Victron Orion-Tr 24/24-17A Smart Chargers (2x) DC-DC charger
 - Victron SmartSolar MPPT 150/35 solar charger
 - Victron Cerbo GX with GX Touch 70 screen
 - Victron SmartShunt 500A
 - Victron Lynx Distributor
- New Neptune 3.60 m GRP RIB tender
- New 6 hp Honda BF6 outboard engine
- New Seawater Pro watermaker (2.2 hp, 40 GPH, dual membrane)
- New drinking water filtration system
- New freshwater pumps and upgraded plumbing
- New electric flush toilet conversion (Jabsco 24V)
- New cutlass bearing and shaft seal
- New life raft
- New EPIRB
- New Starlink satellite internet service
- New Samsung smart TVs (Salon and Master cabin) with Roku entertainment boxes (with AirPlay and Chrome cast)

Accommodation :

ACCOMMODATION:

- 4 cabins + saloon (up to 8 berths)

• Large aft owner's suite with en-suite and sofa

- • 2 x forward guest cabins with shared shower
- • Separate crew cabin + day head
- • Cherry-stained Douka joinery
- • Dark blue Alcantara upholstery

LAYOUT

Bright and open saloon with U-shaped dining area and armchairs. Large passage galley to port. Dedicated chart table to starboard. Forward guest cabins are en-suite with shared central shower. Owner's stateroom aft with dressing table, sofa, and generous storage.

DOMESTIC

- Force 10 oven and 4-burner stove
- Stainless steel double sink
- Microwave and extractor
- Whirlpool freezer (100L) with inverter
- Seawater-cooled fridge
- Washing machine
- Dishwasher
- Watermaker (Seawater Pro, 40 GPH)
- Water filtration system
- 2 x TVs (new)
- Reverse cycle air conditioning in all cabins

Inventory :

NAVIGATION

- ORCA Core navigation system (new)
- Raymarine EV400 autopilot (new)
- NMEA 2000 + SeaTalk bridge (new)
- Raymarine radar/chartplotters (cockpit + chart table)
- Raymarine ST290 wind, depth, rudder, speed displays
- Raymarine P70s
- VHF with DSC

DECK

- 3 x anchors (2 x Delta, 1 x Bruce)
- 100 m chain, 12 mm galvanised
- Electric windlass
- Cockpit table & cushions
- Stern platform with electric lift
- Boarding ladder + side ladders
- Hot & cold cockpit shower
- Davits: Stainless steel

WINCHES

- 2 x Lewmar 99 electric (genoa)
- 2 x Lewmar ST48 electric
- 2 x Lewmar ST48 manual

SAFETY

- New liferaft
- New EPIRB
- 6 x lifejackets
- Electric & manual bilge pumps

CANVAS

- Bimini
- Sprayhood (canvas top, fixed lower screen)
- Lazy bag

TENDER

- Neptune GRP-hull 3.60 m RIB (new)
- Honda 6 hp BF6 outboard (new)

MISCELLANEOUS

- Galley and navigation equipment included
- Interior lighting and fittings refinished (2023)
- Refinished countertops, cabinetry, chart table, and more

TITLE DOCUMENTS AND TAX

Listed below are the documents/or copies which we have seen on listing this yacht:

- EU VAT paid (original invoice)
- Builder's Certificate
- Bill of Sale
- Registration documents
- CE Certificate

KNOWN DEFECTS

HISTORY

This Beneteau 57 has been privately owned and never chartered. She has benefitted from continuous care, and the current owner has carried out a substantial refit, bringing her systems, performance and comfort well above original specification. She is now one of the best-equipped examples of her kind on the market.

Mechanical :

CONSTRUCTION

- Builder: Beneteau
- Model: 57 Owner's Version
- Year: 2004
- HIN: FR-BEYC4057E404
- Hull: Solid GRP with structural liner
- Deck: Balsa sandwich with teak overlay
- Keel: Fin keel

DIMENSIONS

- LOA: 17.6 m (57'0")
- LWL: 15.0 m (49'0")
- Beam: 4.93 m (16'0")
- Draft: 2.6 m (8'6")

MECHANICAL

- Engine: Yanmar 4LHA 160 hp, 4-cylinder diesel
- Engine Hours: Approx. 2,400
- Gearbox: KM5A
- Propeller: 3-blade Max Prop (folding)
- Shaft: 40 mm stainless steel

PERFORMANCE

- Bruce Farr hull design
- Excellent passagemaker with good sail-carrying ability
- Slab-reefed main and furling headsail

TANKAGE

- Fuel: Approx. 840 L in 3 tanks
- Water: 1,000 L
- Holding tanks forward and aft with sea and deck discharge

ELECTRICAL

- 24V domestic system
- 28.6 kWh lithium battery bank (2023)
- REC-BMS and full Victron integration
- Victron MultiPlus II, inverter, chargers, solar MPPT
- Victron GX Cerbo & GX Touch display
- Shore power 220V

RIGGING

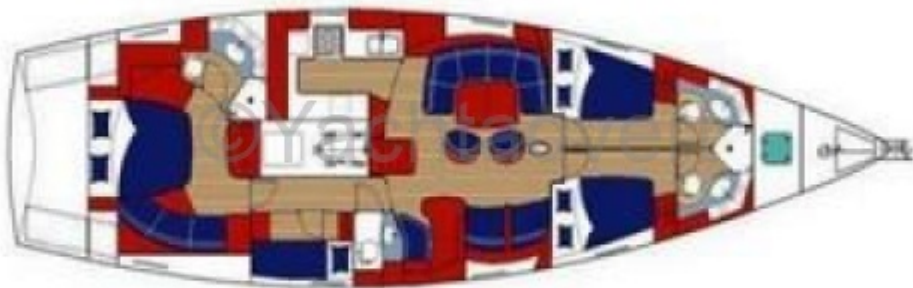
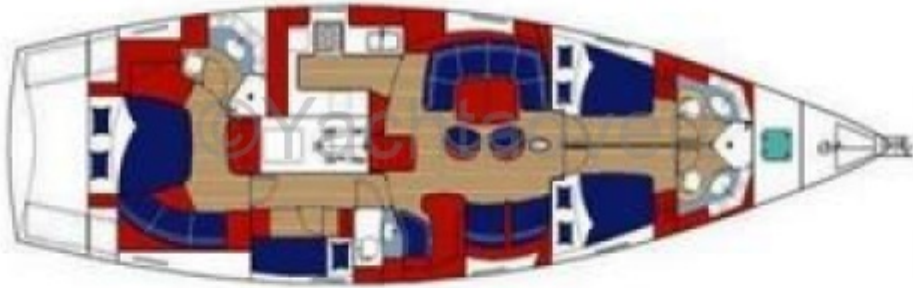
- Sloop rig with removable inner forestay
- Aluminium spars
- Slab-reefed mainsail with lazy jacks and stack pack

SAILS

- Mainsail (2004, good condition)
- Genoa (2004, good condition)
- Staysail
- Spinnaker + pole















































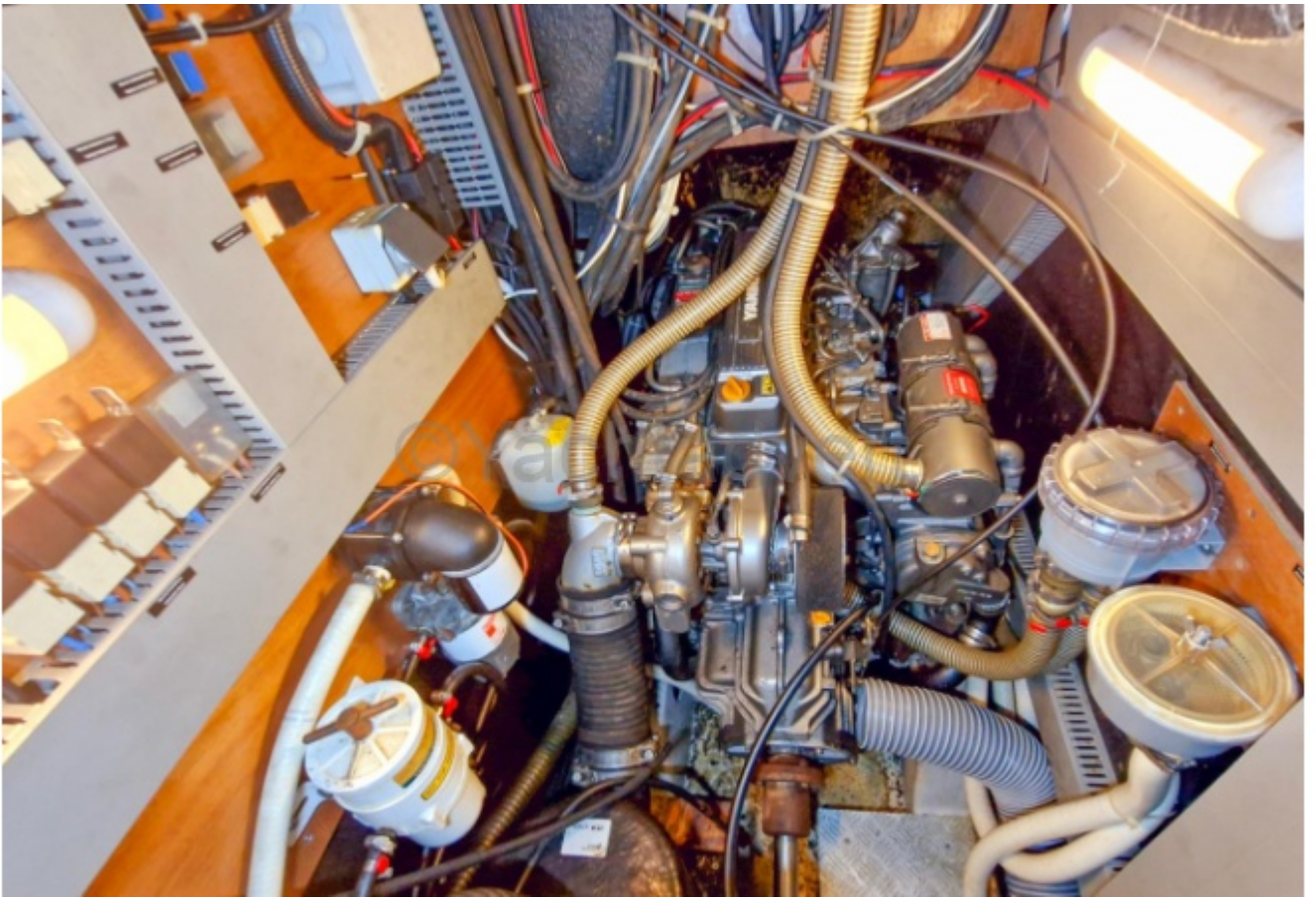
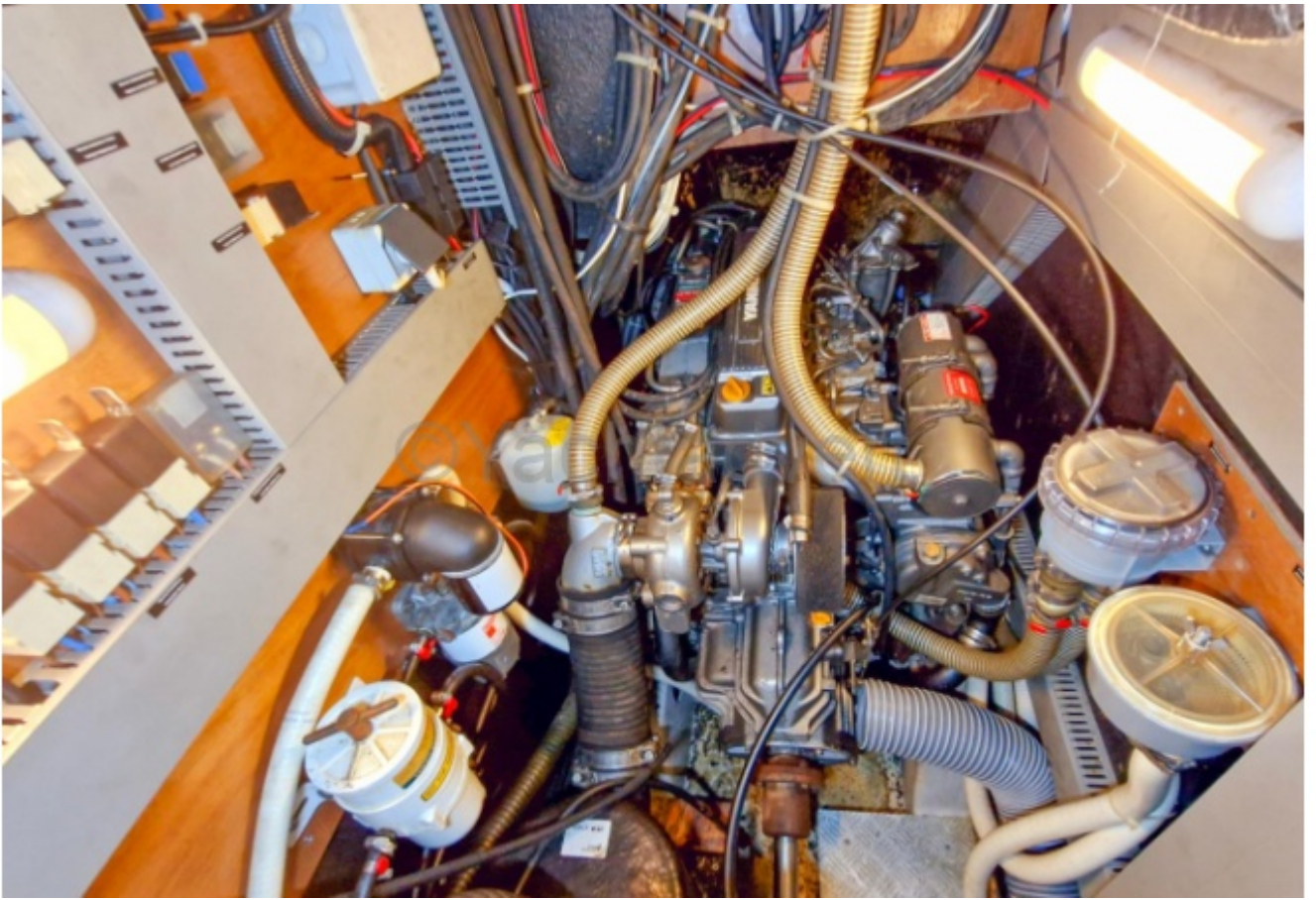


























NETWORK
YACHT BROKERS



NETWORK
YACHT BROKERS











