



## 40 Ocean - 2001

<https://www.yachtadvert.com/fr/1272-bavaria-40-ocean.html>

78 000 EUR ttc



### Général

Année : 2001  
Longueur : 12,19 m  
Quille : Quille ailette  
Région : Preveza, Grèce

Constructeur : Bavaria  
Matériau : GRP Poly  
Largeur : 3,96 m  
Radeau : Non  
Leasing en cours : Non

### Moteurs

Carburant : Diesel  
Puiss. Unit. (CV) : 50

Marque moteur : volvo penta  
Nombre : 1

# Aménagements

Flybridge : Non

Timonerie : Non

---

## électronique

Pilote auto : Non

GPS : Non

VHF : Non

Déssalinisateur : Non

Radar : Non

Sondeur : Non

Traceur de carte : Non

Convertisseur 12/220 : Non

---

## équipement de pont

Hydraulique : Non

Plateforme AR : Non

Taud d'hivernage : Non

Capote de roof : Non

Cockpit en teck : Non

Grand voile sur enrouleur : Non

Passerelle : Non

Bossoirs : Non

Guindeau électrique : Non

Taud cockpit : Non

Pont teck : Non

Génois sur enrouleur : Non

Spinnaker : Non

---

## équipements principaux

Propulseur Arrière : Non

Clim. : Non

Eaux noires : Non

Annexe : Non

Propulseur avant : Non

Groupe élec. : Non

Eau chaude : Non

Flaps : Non

Moteur annexe : Non

---

# électroménager

Congélateur : Non  
Micro-ondes : Non  
Réchaud électrique : Non  
Lave-linge : Non  
Antenne TV : Non  
TV SAT : Non

Glaçons : Non  
Four : Non  
Réchaud gaz : Non  
Chauffage : Non  
Lave-vaisselle : Non  
TV : Non

---

## Divers

**Remarks :**

&nbsp;

**Accommodation :**

**ACCOMMODATION** &bull; Berths: 6

&bull; Cabins: 2

&bull; Heads: 1 (Jabsco manual with new pump)

&bull; Headroom: 1.98m (6ft 5in)

&bull; Upholstery: Fabric, blue

&bull; Curtains:&nbsp;

&bull; Hot Water: Calorifier

&bull; Air Conditioning: Aft cabin only - needs service

&nbsp;**DOMESTIC**  
The galley includes a 2-burner hob, oven, double sink, refrigerator, and cool box. All interior lighting is all LED with touch-dimmer switches, and USB points are conveniently located throughout.

**Disclaimer**  
The Company offers the details of this vessel in good faith but cannot guarantee or warrant the accuracy of this information nor warrant the condition of the vessel. A buyer should instruct his agents, or his surveyors, to investigate such details as the buyer desires validated. This vessel is offered subject to prior sale, price change, or withdrawal without notice.

**Inventory :**

**NAVIGATION**

&bull; Chart Plotter: Raymarine C Series 125

&bull; GPS: Integrated

&bull; Radar: Pathfinder

&bull; AIS: Transceiver

&bull; Autopilot: Raymarine x 2 has autopilot systems for emergency situations

&bull; VHF Radio: Icom ICM-43

&bull; Echo Sounder: Raymarine Tridata

&bull; Log/Speed: Raytheon ST60

&bull; Wind Instrument: Raytheon ST60

&bull; Compass: Olympic 100

**DECK**  
&bull; Decking: Permasteak (2024)

&bull; Anchor: Rocna 25kg

&bull; Chain/Warp: 50m x 10mm

&bull; Windlass: Lofrans Cayman 1000W

&bull; Winches: 4 x Harken

&bull; Cockpit Table: Wooden

&bull; Cockpit Lockers: Aft deck lockers

- &bull; Cockpit/Deck Shower:&nbsp;
- &bull; Pushpit/Pulpit:&nbsp;
- &bull; Boarding Ladder:&nbsp;
- &bull; Lifteraft: 6-person cannister - out of service
- &bull; Lifebuoys: 1
- &bull; Life Jackets: 2
- &bull; EPIRB:&nbsp;
- &bull; Fire Blanket:&nbsp;
- &bull; Manual Bilge Pump: 1
- &bull; Electric Bilge Pumps: 3

**CANVAS**

- &bull; Sprayhood: Fixed screen with new canvas
- &bull; Cockpit Cushions: Loose
- &bull; Dinghy: Honwave 2.7m (3 years old)
- &bull; Outboard: Honda 2.3HP (4 years old)
- &bull; Warps and Fenders: Included
- &bull; All LED lighting with touch dimmer
- &bull; USB charging points throughout
- &bull; Generator: 3.5 KVA with approx. 29 hours run time

&bull; Air conditioning in aft cabin - needs service &bull; Water maker onboard - needs new 240v water supply pump && service

&bull; Some stanchions require re-bedding

This Bavaria 40 Ocean has been privately owned and cruised primarily in the Mediterranean. She was recently refitted with a new deck (Permateak, April 2024), new sails, and rigging checked. The generator has very low hours and adds self-sufficiency for off-grid cruising. Regular maintenance and recent upgrades make her a solid and dependable yacht for her next owners.

**Mechanical :**

&bull; Hull Material: GRP &bull; Deck Material: GRP with Permateak overlay (2024)

&bull; Superstructure: GRP

&bull; Keel Type: Fin keel

&bull; Hull Form: Monohull

&bull; Rudder Type: Spade

&bull; Steering: Wheel

&bull; Hull Colour: White &nbsp; **DIMENSIONS** &bull; LOA: 12.47m (40ft 11in)

&bull; LWL: 10.92m (35ft 10in)

&bull; Beam: 3.99m (13ft 1in)

&bull; Draft: 1.95m (6ft 5in)

**MECHANICAL**

&bull; Engine: Volvo Penta (2001) Saildrive and leg seals replaced April 2024

&bull; Power: 50HP

&bull; Cooling: Fresh water cooled

&bull; Drive Type: Saildrive

&bull; Propeller: 3-blade fixed

&bull; Cruising Speed: 7 knots

&bull; Maximum Speed: 8 knots

&bull; Bow Thruster: Sidepower

&bull; Engine Hours: Approx. 1,500

&bull; Last Engine Service: April 2024 (belts, filters etc by engineer) inc timing belts/new gater on drive leg. September 2025 - oils and filter changed. &nbsp; New starter motor and altenator.

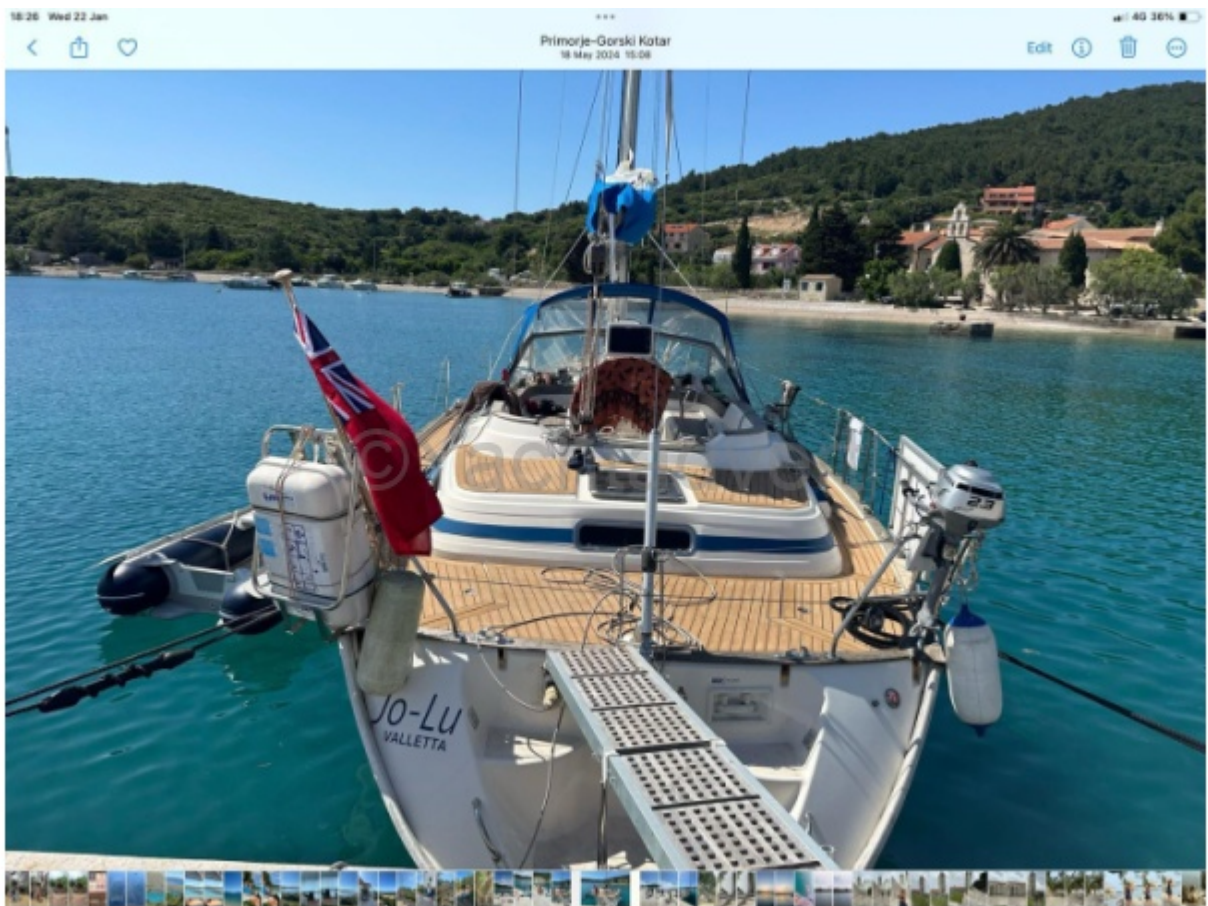
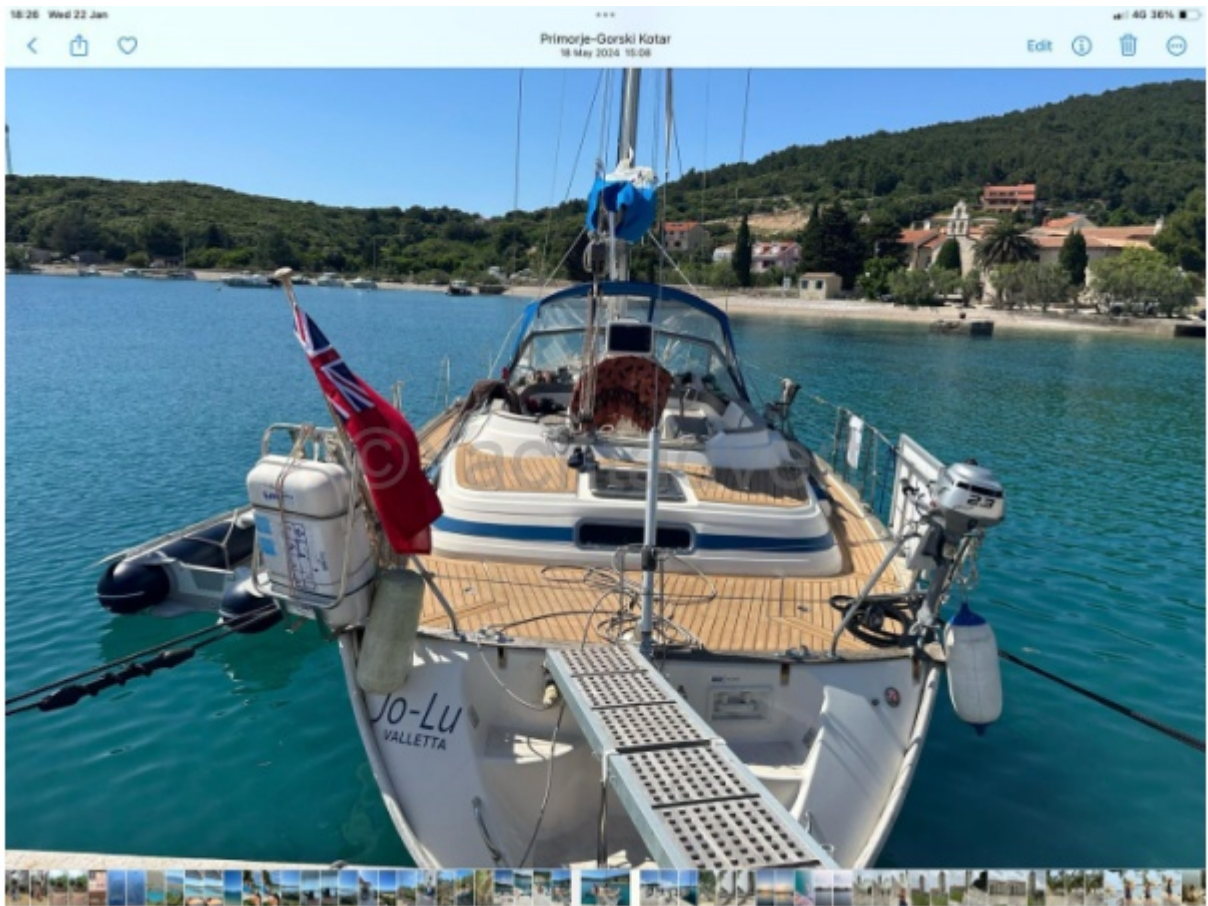
**PERFORMANCE**

- &bull; Capable and stable offshore cruiser
- &bull; Easily handled sail plan with lines led aft</p><p><strong>TANKAGE</strong>
- &bull; Fuel: 230L (1 tank)
- &bull; Fresh Water: 230L + 150L (2 tanks)
- &bull; Holding Tank: 60L
- &bull; Water Maker: - needs new 240v water supply pump &amp; service
- &bull; Hot Water: Calorifier</p><p><strong>ELECTRICAL</strong>
- &bull; Domestic Batteries: 2 x 180Ah (April 2024) AGM
- &bull; Engine Starter Battery: 1 x 100Ah (April 2024) AGM
- &bull; Generator: 3.5KVA (approx. 29hrs use)
- &bull; Battery Charger: 2 x 50Ah
- &bull; Inverter:&nbsp;</p><p>&bull; Solar Panels: 2 x 100W with Victron charger controller</p><p>&bull; Shore Power &amp; Cable:&nbsp;</p><p><strong>RIGGING</strong>
- &bull; Rig Type: Sloop
- &bull; Spars: Aluminium
- &bull; Furling Headsail:&nbsp;</p><p>&bull; Spinnaker Pole:&nbsp;</p><p>&bull; Standing Rigging: (2015) &ndash; no receipt available
- &bull; Running Rigging: Haylards replaced 2024
- &bull; Mainsail Reefing: Slab
- &bull; Stackpack - new 2024
- &bull; Lines Led Aft:</p><p><strong>SAILS</strong>
- &bull; Mainsail: Crusader, new (April 2024)
- &bull; Genoa: Crusader, new (April 2024)</p></strong>

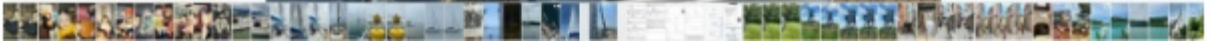
# Médias





















18:33 Wed 22 Jan 4G 34%

Oslo Hvar  
27 August 2024 18:31

Edit ⓘ 🗑️ ↻





























































































