



33 - 1982

<https://www.yachtadvert.com/fr/1355-nauticat-33.html>

67 682 â,- ttc



Général

Année : 1982

Longueur : 10,06 m

Tirant d'eau : 0,00 m

Région : Troon Yacht Haven, Royaume-Uni

Constructeur : Nauticat

Matériau : GRP Poly

Largeur : 3,05 m

Radeau : Non

Leasing en cours : Non

Moteurs

Carburant : Diesel

Puiss. Unit. (CV) : 80

Marque moteur : Ford 2172E

Nombre : 1

Aménagements

Flybridge : Non

Timonerie : Non

électronique

Pilote auto : Non

GPS : Non

VHF : Non

Déssalinisateur : Non

Radar : Non

Sondeur : Non

Traceur de carte : Non

Convertisseur 12/220 : Non

équipement de pont

Hydraulique : Non

Plateforme AR : Non

Taud d'hivernage : Non

Capote de roof : Non

Cockpit en teck : Non

Grand voile sur enrouleur : Non

Passerelle : Non

Bossoirs : Non

Guindeau électrique : Non

Taud cockpit : Non

Pont teck : Non

Génois sur enrouleur : Non

Spinnaker : Non

équipements principaux

Propulseur Arrière : Non

Clim. : Non

Eaux noires : Non

Annexe : Non

Propulseur avant : Non

Groupe élec. : Non

Eau chaude : Non

Flaps : Non

Moteur annexe : Non

électroménager

Congélateur : Non
Micro-ondes : Non
Réchaud électrique : Non
Lave-linge : Non
Antenne TV : Non
TV SAT : Non

Glaçons : Non
Four : Non
Réchaud gaz : Non
Chauffage : Non
Lave-vaisselle : Non
TV : Non

Divers

Remarks :

The ketch rigged Nauticat 33 motor sailor is a comfortable and surprisingly roomy cruising yacht and is ideal for the West Coast of Scotland with the comfort of helming inside or helming from the aft deck position on the good sailing days.

Easy access to the wheelhouse with port and starboard sliding doors, good walkaround decks, aft double berth en suite cabin and forward twin/double berth cabin. This Nauticat 33 is powered by a Ford 80hp diesel engine and has a bow thruster fitted to help manoeuvrability. Standing rigging renewed 2022. Ever popular, 1,160 of these strong and sturdy boats were built in the thirty years of production.

Part exchange and finance available

Accommodation :

Forward cabin with V berth that can convert to a double berth with the infill cushion. Opening roof hatch with blind, hanging locker, storage, under berth storage, portlights. Door to the forward heads.

Through to the saloon with linear galley to starboard and U shaped seating to port with dining table. This seating and table can be converted to a double berth, privacy curtain. Book rack, and storage shelves, port and starboard portlights.

Steps up (storage under) to the wheelhouse with central helm and large chart table to port. Port and starboard sliding doors to side decks. Seat aft to port, L shaped seating aft to starboard, removable table. Floor hatches lift to access the engine compartment. Originally there would have been a large sliding wheelhouse roof hatch, this has been sealed and there is now a small opening roof hatch and dorade vents.

Steps down (storage under) to aft cabin, door to aft heads compartment to starboard, double berth offset to port, hanging locker, vanity unit and sink with hot and cold water system. Three opening portlights, access to steering system. Curtains throughout, carpeting in cabins and saloon.

Galley

Thetford four ring gas hob 2024

SMEV gas oven and grill

Rinnai gas instantaneous water heater

Twin stainless steel sinks

Storage

Microwave (top of locker in forward cabin)

12V fridge in vented locker

Opening roof hatch

Hot and cold water system by calorifier

Heads

Forward heads

Sea toilet
Sink
Hot and cold water system
Storage
Portlight with curtain

Aft heads

Sea toilet
Opening portlight
Storage

Inventory :

Instruments

Raymarine Axiom plotter, radar and fishfinder at helm
Raymarine Quantum radome on mizzen mast
Raymarine ST6001+ autopilot at helm
Plastimo compass at helm
Vetus bow thruster control at helm
Engine instruments roof mounted above helm
ICOM IC M330 DSC VHF radio roof mounted above helm, Spring 2024
Clarion CD player roof mounted above helm
Furuno Navtex NX300 roof mounted above helm
Furuno GPS Navigator roof mounted above helm
Matsutec multi roof mounted above helm
Raymarine i60 wind roof mounted above helm 2024
Raymarine i50 log roof mounted above helm 2024
Raymarine i50 depth roof mounted above helm 2024
12v sockets
Water gauge at galley
Clock and Barometer

Instruments at outside helm

Raymarine Axiom plotter, radar and fishfinder
Bow thruster control
Raymarine ST600R hand held autopilot
Navman repeat 3100S
Inclinometer

Aft deck

Wheel steering helm position with engine control and instruments
Double seat with backrest
Under seat storage locker
Teak deck

Deck equipment

Teak side decks, bow, coachroof and aft deck
Bow sprit in teak and stainless steel with bow roller
Stainless steel pulpit
Bow and side deck stanchions with guard wire and teak capping
Aft deck stanchions with teak capping
Port and starboard gates
Simpson Lawrence Seawolf electric anchor windlass, with cover, deck and helm controls

Mizzen sail

Main sail lazy jacks and sail bag

Furlex 200s roller reefing system

Standing rigging renewed 2022

Two Lewmar 34 self-tailing winches at outside helm

Two Anderson 10 mast winches

Main sail and genoa serviced 2026

</p>

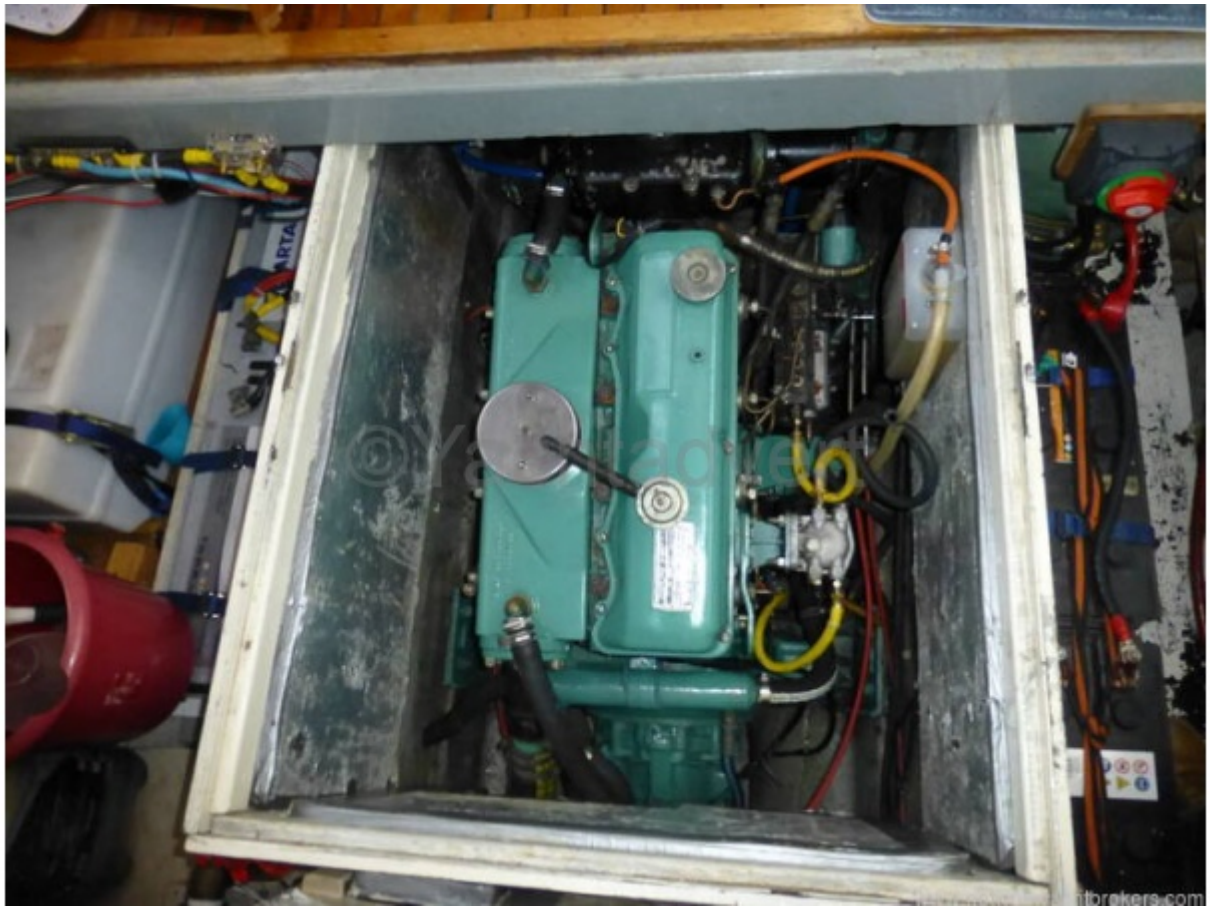
















www.networkyachtbrokers.com



www.networkyachtbrokers.com



























www.networkyachtbrokers.com



www.networkyachtbrokers.com













