



41 Classic - 1999

<https://www.yachtadvert.com/fr/1494-dufour-41-classic.html>

68 746 â,- ttc



Général

Année : 1999

Longueur : 12,19 m

Quille : Quille ailette

Région : Dover Marina, Kent, Royaume-Uni

Constructeur : Dufour

Matériau : GRP Poly

Largeur : 3,96 m

Radeau : Non

Leasing en cours : Non

Moteurs

Carburant : Diesel

Puiss. Unit. (CV) : 50

Marque moteur : Volvo MD22L

Nombre : 1

Aménagements

Flybridge : Non

Timonerie : Non

électronique

Pilote auto : Non

GPS : Non

VHF : Non

Déssalinisateur : Non

Radar : Non

Sondeur : Non

Traceur de carte : Non

Convertisseur 12/220 : Non

équipement de pont

Hydraulique : Non

Plateforme AR : Non

Taud d'hivernage : Non

Capote de roof : Non

Cockpit en teck : Non

Grand voile sur enrouleur : Non

Passerelle : Non

Bossoirs : Non

Guindeau électrique : Non

Taud cockpit : Non

Pont teck : Non

Génois sur enrouleur : Non

Spinnaker : Non

équipements principaux

Propulseur Arrière : Non

Clim. : Non

Eaux noires : Non

Annexe : Non

Propulseur avant : Non

Groupe élec. : Non

Eau chaude : Non

Flaps : Non

Moteur annexe : Non

électroménager

Congélateur : Non
Micro-ondes : Non
Réchaud électrique : Non
Lave-linge : Non
Antenne TV : Non
TV SAT : Non

Glaçons : Non
Four : Non
Réchaud gaz : Non
Chauffage : Non
Lave-vaisselle : Non
TV : Non

Divers

Remarks :

Dufour 41 Classic for sale in Kent

The Dufour 41 Classic was built in 1999 to a year 2000 specification. This Dufour 41 Classic was the 1999, top of the range, boat show flagship vessel for Dufour. This well-crafted Dufour 41 Classic provides accommodation for six people across three cabins, including the saloon. This Dufour 41 Classic benefits from 380-litre freshwater capacity, Raytheon navigation equipment with electronic charts and a Volvo MD22L Diesel engine that was last serviced in March 2025.

This vessel was last out of the water in March 2025 when the anodes were replaced, she was re-antifouled, and the engine was serviced. The current owners have enjoyed and maintained the vessel since 1999 and have been the only owners in the vessel's history, the current owners are looking to sell the vessel as they are retiring from sailing.

Please call our Kent Office +44 (0)1634 571605 for further information or to arrange a viewing.

Accommodation :

This well-crafted Dufour 41 Classic provides accommodation for six people across three cabins including the saloon.

The forward cabin features a generous V-shaped double berth, with storage beneath the berth and shelving along each side. Additional storage is offered via a wardrobe to the port. An overhead deck hatch in the forepeak allows for both ventilation and natural light.

The en-suite heads feature a sea toilet, sink, vanity unit, and shower, all housed in a smooth, white moulded finish for effortless upkeep. Hot water is supplied via a Calorifier water heater and a 240v immersion system.

Moving aft, the saloon features an offset passageway forward on the port side and a centrally placed drop-leaf table. A bench-style settee is positioned on the port side in front of the galley, while a U-shaped settee surrounds the table to starboard. The saloon provides generous storage with a mix of compartments and under-settee lockers on both sides.

The galley offers generous storage throughout and features a double stainless-steel sink with pressurized hot and cold water. The galley also includes a gimballed 3-burner gas stove with oven and grill, a countertop 12v fridge, and plenty of storage space for all your provisions.

A full-sized, forward-facing chart table is situated to starboard at the aft end of the saloon, complete with convenient under-seat storage. The vessel switch panels and navigation equipment are easily accessible from the seated position. The table also features a spacious chart locker and an additional storage compartment for added convenience.

Directly aft of the chart table is the aft cabin, which includes a spacious double berth over 6 feet long and a practical standing area for dressing. The cabin provides plenty of storage, with shelving, hanging lockers, and under-seat locker.

The main heads are located on the port side opposite the chart table. The heads include a shower, sea toilet, a sink with pressurised hot and cold water, and vanity unit, all finished in an easy-to-clean white moulded design.

Again, located behind the heads compartment is another aft cabin, featuring a generous double berth over 6 feet in length and a practical standing area for dressing. This cabin also offers a variety of storage options, including shelving, hanging lockers, and an additional under-seat locker for added convenience.

This Dufour 41 Classic is fitted with an Eberspächer diesel heater, distributing warmth to the main saloon, the forward cabin, and the rear cabin's. A radio/CD player with saloon speakers.

Access to the spacious aft cockpit is via the companionway. For a yacht of this size, it offers generous seating around the wheel steering column, which is equipped with a compass, depth sounder, wind speed and direction instruments, and engine controls conveniently placed at the helm.

Inventory :

Deck Equipment:

- Main Anchor – Danforth with Chain
- Windlass – Electric.
- Lifeline gates
- Mainsail Cover
- Sprayhood
- Cockpit Enclosure
- Cockpit Cushions
- Cockpit Dodgers
- Binnacle Cover
- Bathing Platform
- Boarding ladder
- 6+ Mooring warps.
- 8 x Fenders

Navigation Equipment:

- Steering compass
- Depth Gauge – ST50
- Speed Log – Raymarine ST50
- Windspeed & Direction – ST50
- VHF Radio – Navico Axis 1400 DSC
- GPS/Chartplotter – Ratheon – HSB2 with C–Maps
- Integrated Radar – Ratheon Raymarine
- AIS Receiver and Transponder – Watchmate 850
- Autopilot – Raymarine ST6000 with ICS DEC 3 Controller
- SSB Radio
- SSB Transceiver
- Electric Charts – C-Maps
- Radio/CD player - with saloon speakers
- Navigation lights – Mast level
- Anchor light.
- Paper Charts
- Digital clock and barometer

Safety Equipment:

- 1 x Extinguishers in the engine bay
- 1 x Fire Blanket
- 2 x Harness
- 4 x Life Jackets
- 1 x Horseshoe Lifebuoys with floating light
- Emergency tiller
- 1 x Manual bilge pump
- 1 x Electric bilge pump
- First Aid Kit
- Radar Reflector linked to the AIS - Watchmate

Keel/Hull:

- Deep Lead Keel with Spade rudder and wheel steering.

History & Construction:

Built in 1999 to 2000 specifications this Dufour 41 Classic was the 1999 top-of-the-range, boat show flagship vessel for Dufour. The vessel features a white GRP hull and superstructure and teak decks. She benefits from a deep lead keel, with a spade rudder with wheel steering, a self-draining cockpit and anchor well, alloy toe rails, Stainless steel stanchions, pulpit.

The vessel was last out of the water in March 2025 when the anodes were replaced, re-antifouled, and the engine serviced. The current owners have enjoyed and maintained the vessel from since buying the boat from the boat show in 1999. The current owners are looking to sell the vessel as they are retiring from sailing.

Title Documents:

When preparing these details, we have seen the following documentation:

Bill of Sale in the owner's name

Original Purchase invoice showing VAT has been paid

Builders Certificate

Proof of location on 31st December 2020

Declaration of Conformity to Recreational Craft Directive

Builders Manual

British Small Ships Registry Certificate

Marine Insurance:

As one of the UK's largest Brokers with over 700 boats for sale we are able to introduce you to Boat Insurance providers that offer all types of Boat Insurance including insurance for Yachts, Sailing Boats, Motor Cruisers, Narrowboats, Inland Waterway Craft, Barges, Houseboats, Speedboats, Rigid Inflatable Boats, Waterski Boats, Jet Skis, Personal Watercraft and Dinghies.

Just click on the following link to request an insurance quote for this boat or your current boat: www.networkyachtbrokerskent.co.uk/marineinsurance/

Mechanical :

Spars & Sails:

This Dufour 41 Classic is a masthead Bermudan sloop rig, with a deck-stepped 1999 aluminium Dufour mast and boom with stainless steel standing rigging, which was replaced in 2011. The running rigging has been replaced when needed.

This vessel is equipped with a furling headsail and a slab reef mainsail with lazy Jacks, stack pack, spinnaker pole, and manual backstay adjuster.

Winches:

- 2 x Sheet – Lewmar ST 40 - Self-Tailing.
- 2 x Halyard – Lewmar ST 48 - Self-Tailing.

Sails:

- 1 x Mainsail – Northrop, Dacron, 2010 - Good condition, last valeted in 2021
- 1 x Jib – Northrop, Dacron, 2010 - Good condition, last valeted in 2021
- 1 x Spinnaker – 2011 – Good Condition

- 1 x Cruising Shoot – Unknown condition, Unknown age.

Mechanical Systems:

This Dufour 41 Classic has a single 1999, 50HP 4 Cylinder, Volvo MD22L diesel engine powering a sail drive with a three-bladed folding propeller. The sail drive gaiter was replaced in 2019, and the engine was last serviced by M&P Marine in March 2025.

The Volvo is supplied by a 185-litre capacity fuel tank with Morse controls mounted on the at the helm. This yacht will achieve a cruising speed of 6 knots and a maximum speed of 8 knots.

Electrical Systems:

2 x 12-volt batteries (1 x engine, 12v, 525Ah replaced in 2009 + 2 x Domestic, 12V,104Ah replaced in 2009)

These batteries are charged by the engine alternator and a battery charger when connected to the 240V power main. This Dufour 41 Classic also benefits from a 240-volt ring main throughout the vessel, and a 240V immersion heater.









networkyachtbrokers.com



networkyachtbrokers.com







































networkyachtbrokers.com



networkyachtbrokers.com



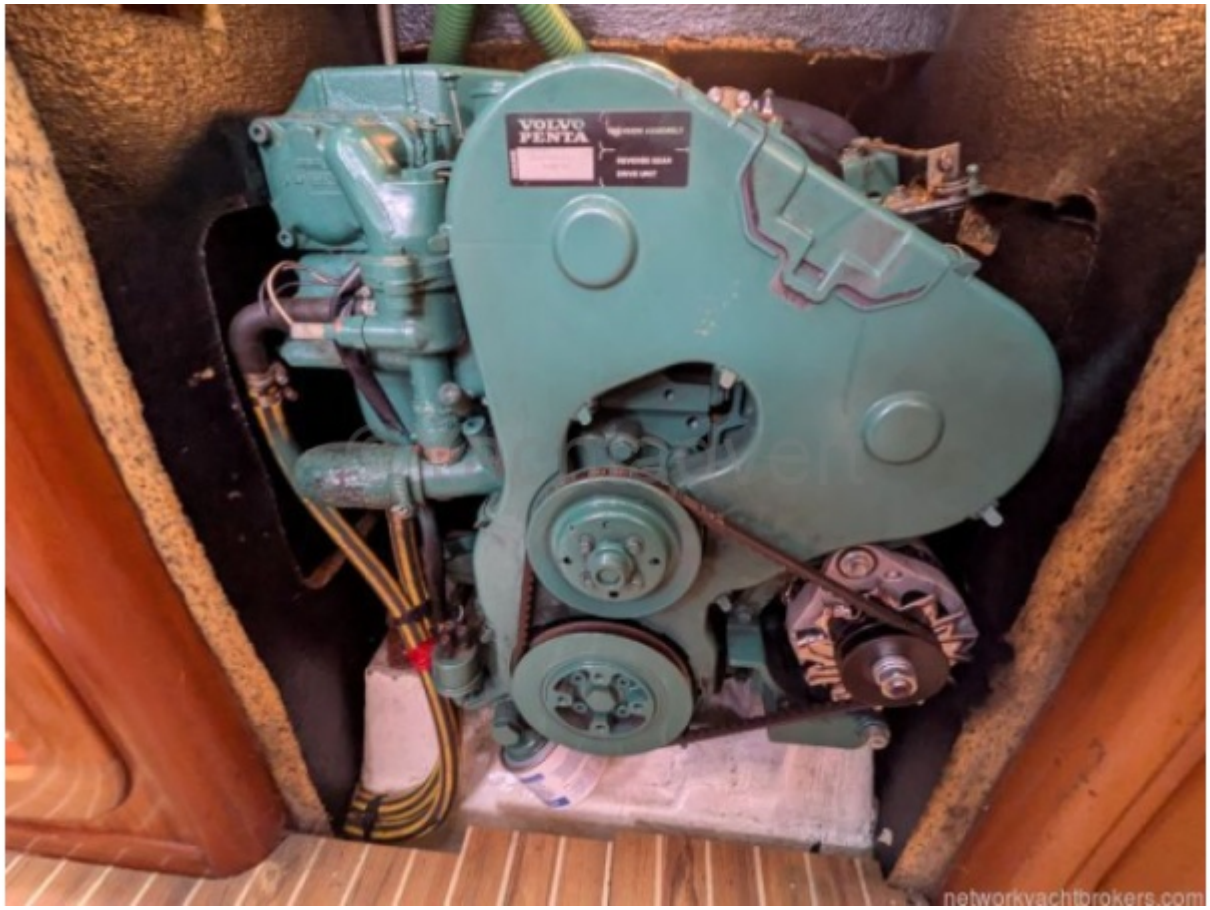
networkyachtbrokers.com



networkyachtbrokers.com







networkyachtbrokers.com



networkyachtbrokers.com