



390 - 1986

<https://www.yachtadvert.com/fr/1505-najad-390.html>

69 463 â,- ttc



Général

Constructeur : Najad

Matériau : GRP Poly

Largeur : 3,35 m

Région : Chichester Marina, Royaume-Uni

Sous type : Plaisance

Année : 1986

Longueur : 11,89 m

Radeau : Non

Leasing en cours : Non

Moteurs

Carburant : Diesel

Puiss. Unit. (CV) : 62

Marque moteur : Volvo Penta MD30

Nombre : 1

Aménagements

Flybridge : Non

Timonerie : Non

électronique

Pilote auto : Non

GPS : Non

VHF : Non

Déssalinisateur : Non

Radar : Non

Sondeur : Non

Traceur de carte : Non

Convertisseur 12/220 : Non

équipement de pont

Hydraulique : Non

Plateforme AR : Non

Taud d'hivernage : Non

Capote de roof : Non

Cockpit en teck : Non

Grand voile sur enrouleur : Non

Passerelle : Non

Bossoirs : Non

Guindeau électrique : Non

Taud cockpit : Non

Pont teck : Non

Génois sur enrouleur : Non

Spinnaker : Non

équipements principaux

Propulseur Arrière : Non

Clim. : Non

Eaux noires : Non

Annexe : Non

Propulseur avant : Non

Groupe élec. : Non

Eau chaude : Non

Flaps : Non

Moteur annexe : Non

électroménager

Congélateur : Non
Micro-ondes : Non
Réchaud électrique : Non
Lave-linge : Non
Antenne TV : Non
TV SAT : Non

Glaçons : Non
Four : Non
Réchaud gaz : Non
Chauffage : Non
Lave-vaisselle : Non
TV : Non

Divers

Remarks :

The **Najad 390** is a classically designed offshore cruising sailboat, built in Sweden by Najad in 1985 commissioned in 1986. It was designed by Thorwald Karlsson for serious blue water cruising.

Key yacht features:

- Centre-cockpit layout for safety and space.
- Encapsulated long fin keel with lead ballast providing stability.
- Skeg-hung rudder that is well-protected and smooth under sail

"Seascape" is a well equipped version with a Volvo MD30 62hp engine, bow thruster, Raymarine Chartplotter, wind / speed instruments, Radar, auto pilot, ample accommodation, centre cockpit, Standing rigging and sails replaced 2018.

Accommodation :

The **Najad 390** offers well-thought-out accommodation for long-distance cruising, with comfort, security, and practical use of space in mind.

Forward Cabin

V-berth or double berth configuration

Storage lockers and shelves along the sides

Hanging locker/wardrobe

Good natural light and ventilation via overhead hatch

U-shaped settee to port (converts to an extra berth)

Straight settee to starboard

Large central fold-down dining table with bottle storage

Shelving, lockers, and ample storage outboard

Full headroom

Warm wood joinery and marine upholstery

Aft Cabin (Owner's Cabin)

Double berth

Seating area

Storage lockers

Good headroom and storage, with hanging lockers

Galley

Located to port of the companionway

U-shaped layout

Double stainless-steel sink, fridge, gimbaled gas stove/oven

Extensive storage and counter space

Navigation Station

Starboard side of the companionway

Full-size chart table with seat

Electrical panel, instruments

Inventory :

Electronics

Raymarine C80 Plotter

Raymarine Radar

Raymarine log, depth && speed

Raymarine Autopilot

Garmin VHF with repeater in cockpit

Furuno GPS

Autohelm Navcenter chartplotter with repeater in cockpit

Macmurdo Navtex receiver

4 x batteries - 1 x engine, 1 x bow thruster, 2 x leisure

Merlin Battery Charger

Adverc Battery maintenance system

Panasonic CD/Radio with speakers in saloon && cockpit

General Equipment

Dickinson Newport diesel space heater in saloon (out of commission)

Eberspacher 4DL diesel warm air heater with outlets throughout (2018)

Calorifier for hot water

Teak decks

Teak cockpit

Radar reflector

Liferaft

Swim ladder

Cockpit Table

Spray hood

Cockpit enclosure

Electric && manual bilge pumps

Diesel heating

Hot / cold water

Holding tank

SMEV gas cooker with oven && grill

Isotherm fridge

Mechanical :

Engine

Volvo Penta MD30 (62hp) diesel engine

Bow thruster (2018)

Brunton Autoprop

Rig

Standing Rigging replaced 2018

Mainsail 2018

140% Genoa 2018

**Lifeline gates **

Seldon in mast furling Mainsail

Cruising chute with snuffer

Boom Brake system (anti-jibe)

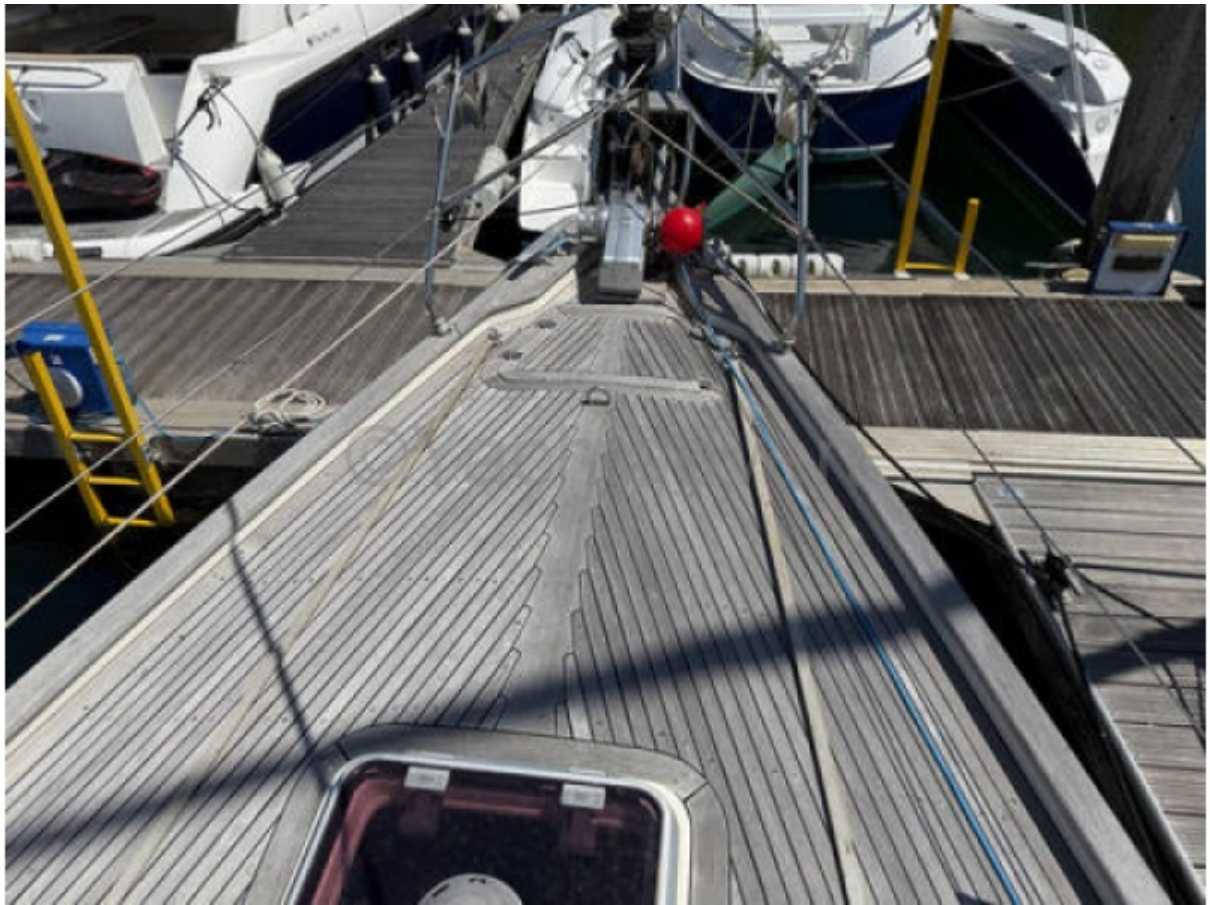
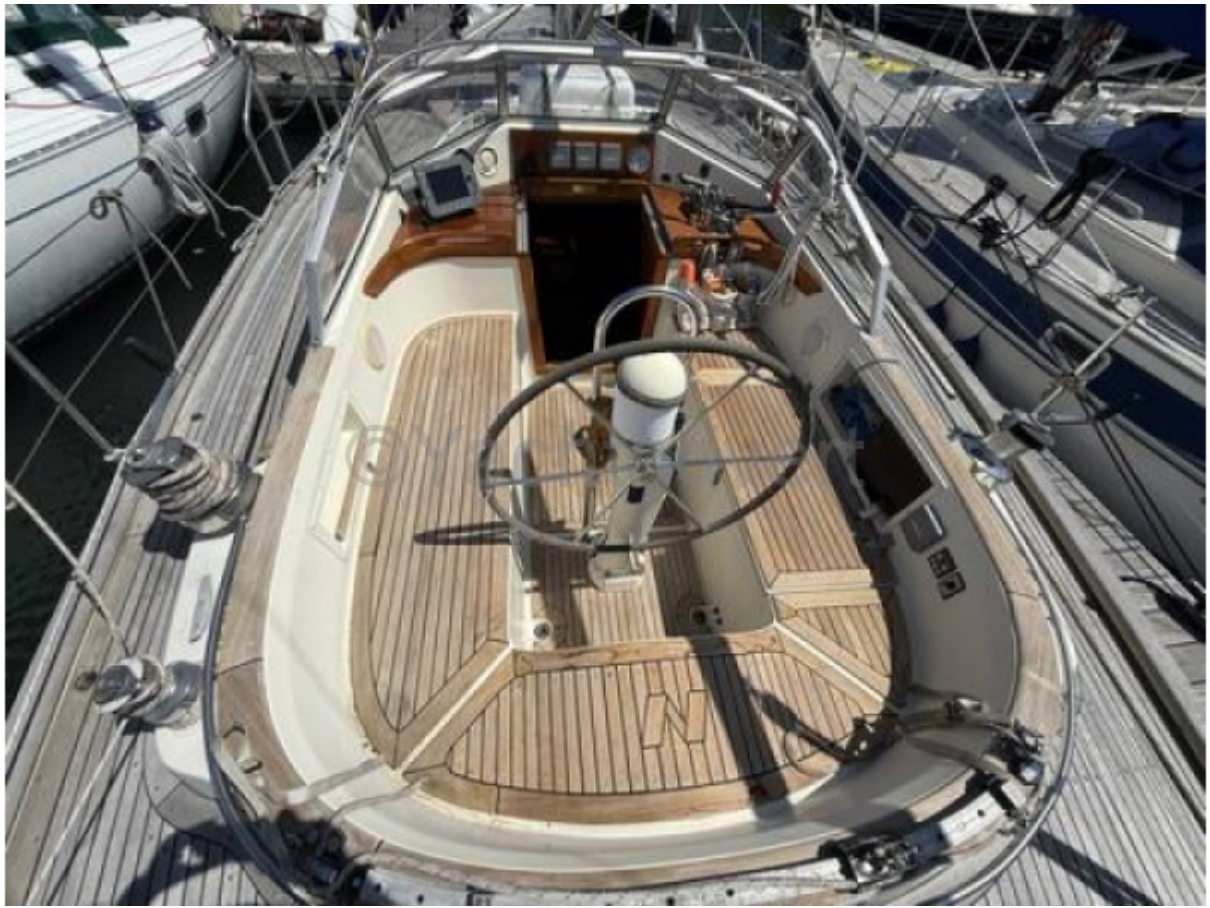
2 x Lewmar 52ST primary winches

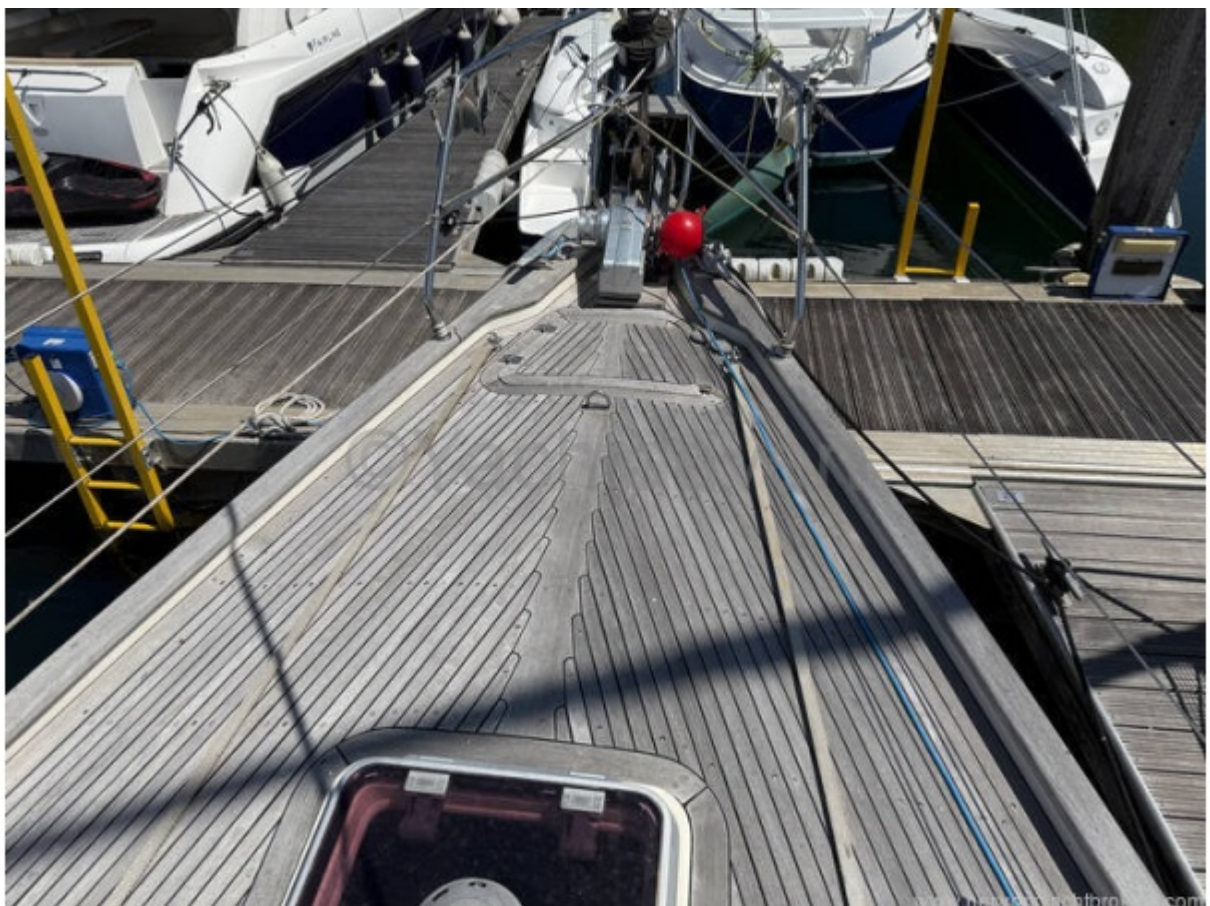
2 x Lewmar 16ST Headsail & mainsail winches

2 x Lewmar 40ST Halyard winches

</p>

















www.networkyachtbrokers.com



www.networkyachtbrokers.com









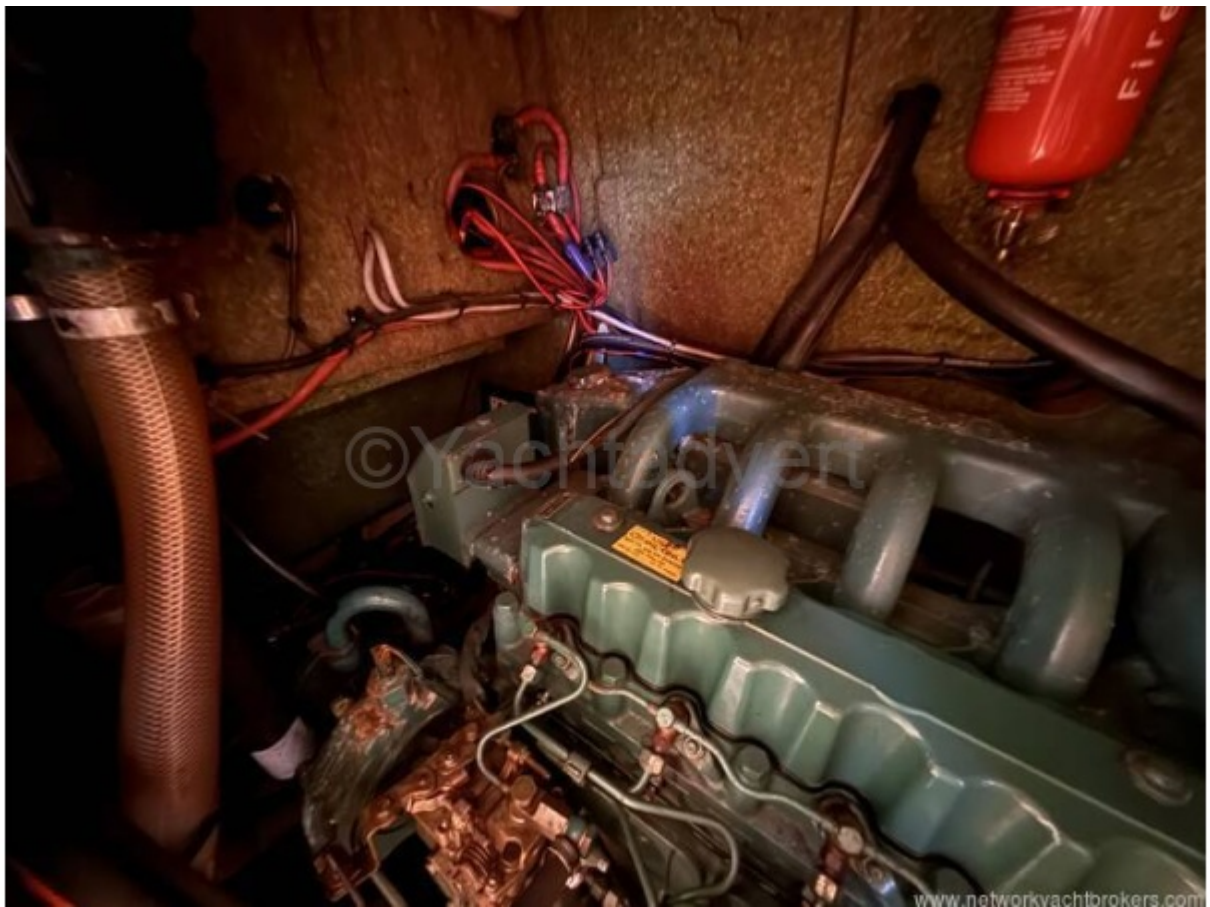


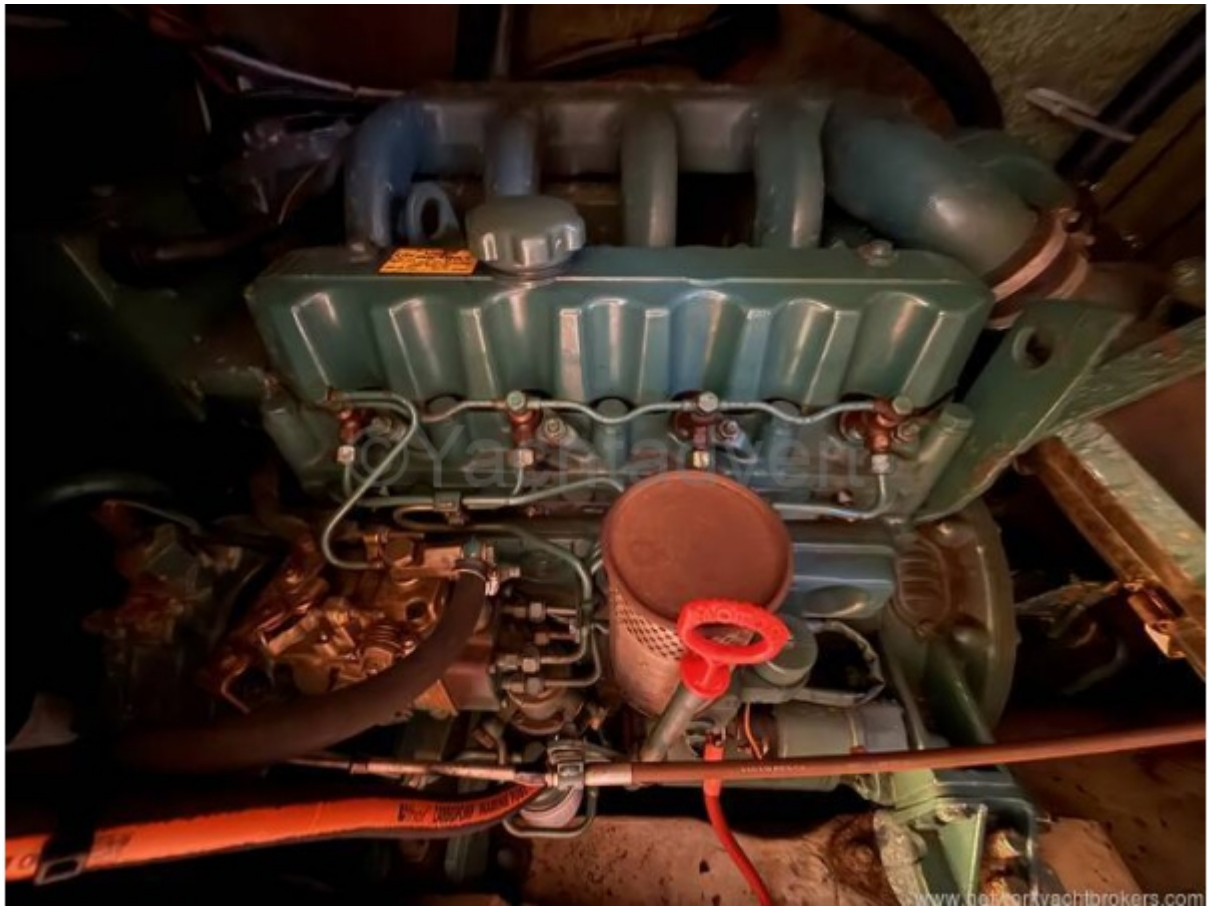














www.networkyachtbrokers.com



www.networkyachtbrokers.com



