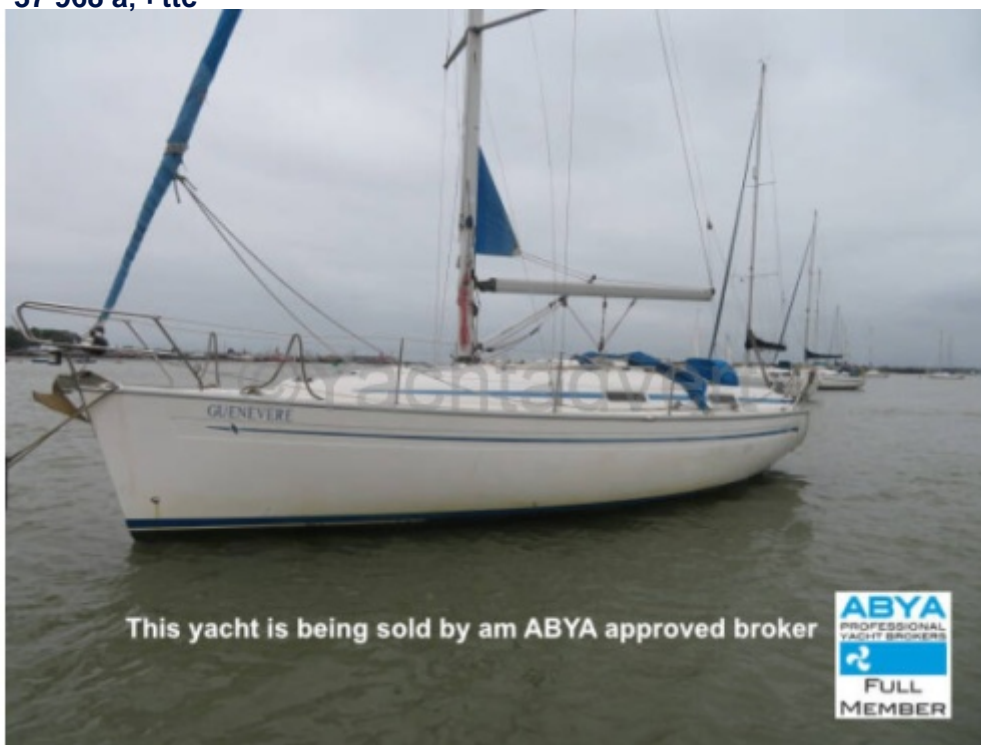




34 - 1999

<https://www.yachtadvert.com/fr/1559-bavaria-34.html>

37 968 â,- ttc



Général

Année : 1999

Longueur : 10,67 m

Tirant d'eau : 0,00 m

Radeau : Non

Leasing en cours : Non

Constructeur : Bavaria

Matériau : GRP Poly

Largeur : 3,35 m

Quille : Quille ailette

Région : River Medway, Kent, Royaume-Uni

Moteurs

Carburant : Diesel

Puiss. Unit. (CV) : 20

Marque moteur : VOLVO Penta MD20

Nombre : 1

Aménagements

Flybridge : Non

Timonerie : Non

électronique

Pilote auto : Non

GPS : Non

VHF : Non

Déssalinisateur : Non

Radar : Non

Sondeur : Non

Traceur de carte : Non

Convertisseur 12/220 : Non

équipement de pont

Hydraulique : Non

Plateforme AR : Non

Taud d'hivernage : Non

Capote de roof : Non

Cockpit en teck : Non

Grand voile sur enrouleur : Non

Passerelle : Non

Bossoirs : Non

Guindeau électrique : Non

Taud cockpit : Non

Pont teck : Non

Génois sur enrouleur : Non

Spinnaker : Non

équipements principaux

Propulseur Arrière : Non

Clim. : Non

Eaux noires : Non

Annexe : Non

Propulseur avant : Non

Groupe élec. : Non

Eau chaude : Non

Flaps : Non

Moteur annexe : Non

électroménager

Congélateur : Non
Micro-ondes : Non
Réchaud électrique : Non
Lave-linge : Non
Antenne TV : Non
TV SAT : Non

Glaçons : Non
Four : Non
Réchaud gaz : Non
Chauffage : Non
Lave-vaisselle : Non
TV : Non

Divers

Remarks :

Bavaria 34 for sale in Kent

The biggest little Bavaria: we believe that even smaller yachts can be tremendous fun. With this Bavaria 34, Bavaria has succeeded in bringing together the most important aspects of sailing, sailing pleasure and spaciousness, in one boat. This yacht has excellent, and very safe, sailing characteristics. Owned by the current owner for the past three years and has had only three previous owners. The current owner is selling due to him moving away from the coast.

Please call our Kent Office +44 (0)1634 571605 for further information or to arrange a viewing.

Accommodation :

The 2-cabin version of the Bavaria 34 has all the amenities you need below deck for a cruise. The saloon is large, with over 6' standing headroom and lots of natural light from the hatches and windows - all of which have blinds fitted. The hatches have blackout blinds and fly screens. The chart table has storage and is ideal for planning and navigation during night passages. The galley as a 2-burner stove with oven and grill, refrigerator, sink and plenty of working space thanks to the fitted stove and sink covers. The roomy heads have plenty of space for showering as well as a wet locker for wet gear. The saloon grey upholstery as

Up to 6 people can be accommodated on "Guenevere" with the large, comfortable owners' cabin aft, a double cabin forward and 2 single berths in the saloon. The solid wood and high-quality equipment add to the feel of comfort. The boat is heated throughout by a Mikuni diesel cabin heating system. Plug sockets in all the cabins add to the convenience of life onboard. The sound system has Bluetooth connectivity as well as radio, CD player and TV, with speakers in the saloon and the cockpit. It has a great outdoor space with a nice cockpit table.

There is a great deal of storage space in every cabin, including hanging wardrobe space in both forward and aft cabins, and even storage and drawers in the central table that folds out to make the perfect place to gather to relax after a great day sailing

Inventory :

Deck Equipment:

- Anchor CQR with 30m of chain
- Sprayhood
- Binnacle cover
- Bathing platform
- Swim ladder stainless steel
- 5 x Mooring warps.
- 8 x Fenders

Navigation Equipment:

- Steering compass
- Depth Raymarine ST60
- Speed/Log - Raymarine ST60
- Wind direction/speed - Tactick
- VHF Radio ICOM
- GPS Raymarine
- Radar Raymarine
- AIS Receiver Raymarine
- Autopilot Raymarine
- Radio/CD player - with saloon and cockpit speakers
- Navigation lights Deck level
- Navigation lights - Masthead
- Anchor light
- Clock and barometer

Safety Equipment:

- 1 x Automatic Fire Extinguisher in engine bay
- 6 x Fire Extinguishers
- Fire Blanket
- Gas Alarm
- 3 c Cockpit Harness Points
- Deck Light
- 1 x Horseshoe Lifebuoys

MOB Sling **Emergency Tiller** **Radar reflector** **First Aid kit** **1 x Electric bilge pumps with alarm** **1 x Manual bilge pump**

Keel/Hull: **Cast iron Fin Keel with wheel steering, Hull is copper-coated.**

History & Construction: **Built in 1999, this Bavaria 34 has a white GRP hull and decks with non-slip surfaces. It has a teak deck in the aft cockpit area. Wheel steering. Aluminium toe rails. Stainless steel stanchions, pulpit. Walk through the transom to the bathing platform. Teak battens to the bathing platform. Self-draining cockpit. Last out of the water in March 2024 when the coppercoat was reactivated, hull polished, and anodes changed. The owner is selling as he is moving away from the coast and will have no time to use.**

Title Documents: **When preparing these details, we have seen the following documentation:**

- Bill of Sale in the owner's name.**
- Previous Bills of Sale.**
- Declaration of Conformity to the Recreational Craft Directive.**
- An invoice showing Vat has been paid at the time of purchase.**
- British Small Ships Registry Certificate**
- Owner's manual**
- Invoices for work completed on the vessel.**

Marine Insurance: **As one of the UK's largest Brokers with over 700 boats for sale, we can introduce you to Boat Insurance providers that offer all types of Boat Insurance including insurance for Yachts, Sailing Boats, Motor Cruisers, Narrowboats, Inland Waterway Craft, Barges, Houseboats, Speedboats, Rigid Inflatable Boats, Waterski Boats, Jet Skis, Personal Watercraft and Dinghies.**

Just click on the following link to request an insurance quote for this boat or your current boat: www.networkyachtbrokerskent.co.uk/marineinsurance/

Mechanical :

Sails and Rigging:

This Bavaria 34 has a Bermudan Fractional rig with an aluminium Seldon deck-stepped mast and boom with a manual adjustable backstay. It has stainless steel standing rigging that was replaced in 2024. The running rigging has been changed as required. All lines are led aft to control the in-mast furling mainsail and furling genoa.

Winches:

2 x Halyard winches - Harken self-tailing **2 x Sheet winches - Harken self-tailing**

Sails:

1 Mainsail, Dacron, 1999, condition fair **1 Genoa, Dacron, 1999, condition fair**

Mechanical Systems:

This Bavaria 34 has a single Volvo Penta MD 20 20HP diesel engine with saildrive to a 2-blade fixed prop with a rope cutter. The engine has indirect cooling via a heat exchanger. The engine has completed a total of 1429 hours as of 18th August 2025. The engine was last serviced in March 2024 by the owner. The saildrive gaiter was last changed in 2015. There is a 91-litre plastic fuel tank. This yacht will cruise at 6 knots and has a maximum speed of approximately 7 knots.

Electrical Systems: **4 x 12-volt batteries (1 x engine + 2 x domestic 270ah EACH 1 x anchor batteries) all new in 2020, charging from alternator, solar panel and via 240v shore power system with ring main, immersion heater and battery charger. The yacht is also fitted with a 2000-watt inverter.**





















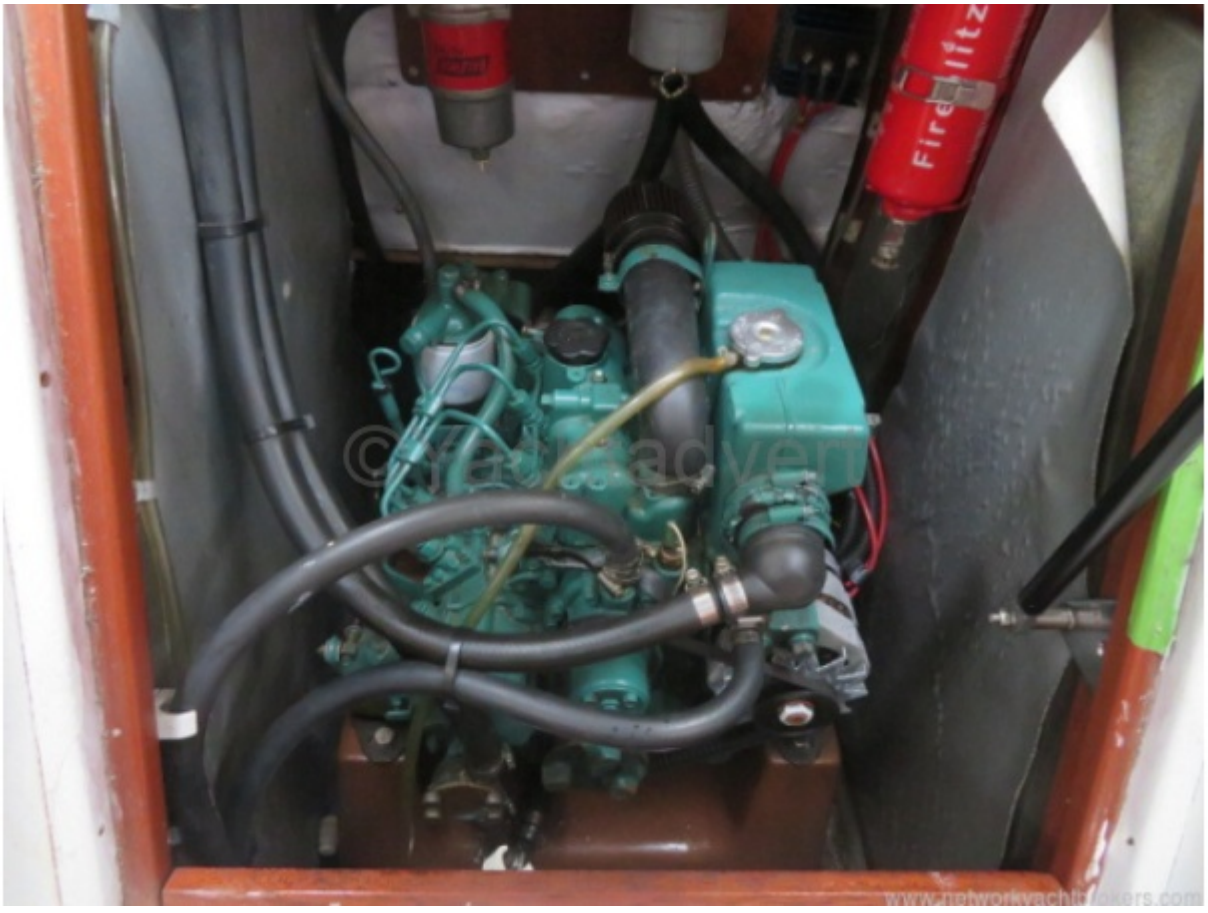
















This yacht is being sold by an ABYA approved broker



www.networkyachtbrokers.com