



310 Statesman - 1991

<https://www.yachtadvert.com/fr/2095-sealine-310-statesman.html>

28 074 â,- ttc



Général

Année : 1991

Longueur : 10,36 m

Tirant d'eau : 0,00 m

Région : Chatham Marina, Kent, Royaume-Uni

Constructeur : Sealine

Matériau : GRP Poly

Largeur : 3,35 m

Radeau : Non

Leasing en cours : Non

Moteurs

Nombre : 2

Marque moteur : Volvo AQ431

Puiss. Unit. (CV) : 205

Aménagements

Flybridge : Non

Timonerie : Non

électronique

Pilote auto : Non

GPS : Non

VHF : Non

Déssalinisateur : Non

Radar : Non

Sondeur : Non

Traceur de carte : Non

Convertisseur 12/220 : Non

équipement de pont

Hydraulique : Non

Plateforme AR : Non

Taud d'hivernage : Non

Capote de roof : Non

Cockpit en teck : Non

Grand voile sur enrouleur : Non

Passerelle : Non

Bossoirs : Non

Guindeau électrique : Non

Taud cockpit : Non

Pont teck : Non

Génois sur enrouleur : Non

Spinnaker : Non

équipements principaux

Propulseur Arrière : Non

Clim. : Non

Eaux noires : Non

Annexe : Non

Propulseur avant : Non

Groupe élec. : Non

Eau chaude : Non

Flaps : Non

Moteur annexe : Non

électroménager

Congélateur : Non	Glaçons : Non
Micro-ondes : Non	Four : Non
Réchaud électrique : Non	Réchaud gaz : Non
Lave-linge : Non	Chauffage : Non
Antenne TV : Non	Lave-vaisselle : Non
TV SAT : Non	TV : Non

Divers

Remarks :

Sealine 310 Statesman for Sale – Located in Kent

This **1991 Sealine 310 Statesman** is a fine example of one of Sealine's most popular flybridge cruisers, offering a great combination of comfort, performance, and practicality. Presented in good overall condition, this model has benefitted from extensive recent maintenance and investment, making it an attractive choice for anyone seeking a capable and stylish family cruiser.

Powered by **twin Volvo AQ431 205HP petrol engines**, the boat underwent a **full engine rebuild and service in October 2025**, with the **outdrives serviced** at the same time and **new bellows fitted in April 2024**. This work ensures reliable and efficient performance, whether cruising along the coast or enjoying extended weekends afloat.

On deck, the Sealine 310 Statesman impresses with its **excellent sea-keeping abilities**, a **spacious cockpit**, and a **well-designed flybridge**, providing both comfort and visibility when underway. The large cockpit area is ideal for entertaining or relaxing, with easy access to the swim platform and good storage throughout for gear and equipment.

Below deck, the interior offers **comfortable accommodation for up to six people**, making it ideal for family cruising or hosting friends. The saloon is bright and sociable, with a practical galley, convertible dinette, and ample seating. The forward cabin provides a generous double berth, while the mid-cabin offers additional sleeping quarters, ensuring flexibility for longer stays aboard.

The specification includes **electric windlass, GPS, and a range of navigational equipment**, providing confidence and convenience for both experienced skippers and newcomers alike.

Overall, this Sealine 310 Statesman represents excellent value for money. It has clearly been well cared for and thoughtfully maintained, ready for immediate enjoyment. Whether you're looking for a capable cruiser for coastal adventures or a comfortable base for marina life, this boat delivers both performance and comfort in equal measure.

A **berth at Gillingham Marina** may also be available by separate negotiation.

For further information or to arrange a viewing, please contact our **Kent Office at +44 (0)1634 571605** — early viewing is highly recommended.

Accommodation :

This Sealine 310 Statesman has a very roomy feel to her with a large aft cockpit with L shaped seating and table and easy access to the flybridge that can seat 4 in comfort.

The forward cabin has an offset double berth and ensuite heads with a large hanging locker, vanity surface and additional stowage lockers. It also has a large opening deck hatch.

Aft of the forward cabin is another double berth with hanging locker. Opposite is the heads with marine toilet, washbasin with pressurised hot and cold water, shower and vanity unit.

Walking up two steps you enter the main saloon with its linear Starboard galley. The galley has a sink with hot and cold water, 2 burner cooker, an oven with grill and 12v Fridge. Opposite the Galley is the U-shaped settee and saloon table that converts into another double berth. The saloon has a very light and airy feel to it. The upholstery, curtains, and carpets have all been replaced over the years. This boat also boasts a safe. It has a JVC Radio/CD player.

Inventory :

Deck Equipment:

- Anchor – with chain
- Windlass – Electric
- All-over cockpit cover - blue new 2023
- Flybridge cover - Blue new 2022
- Swim platform
- Swim ladder – stainless











www.networkyachtbrokers.com



www.networkyachtbrokers.com



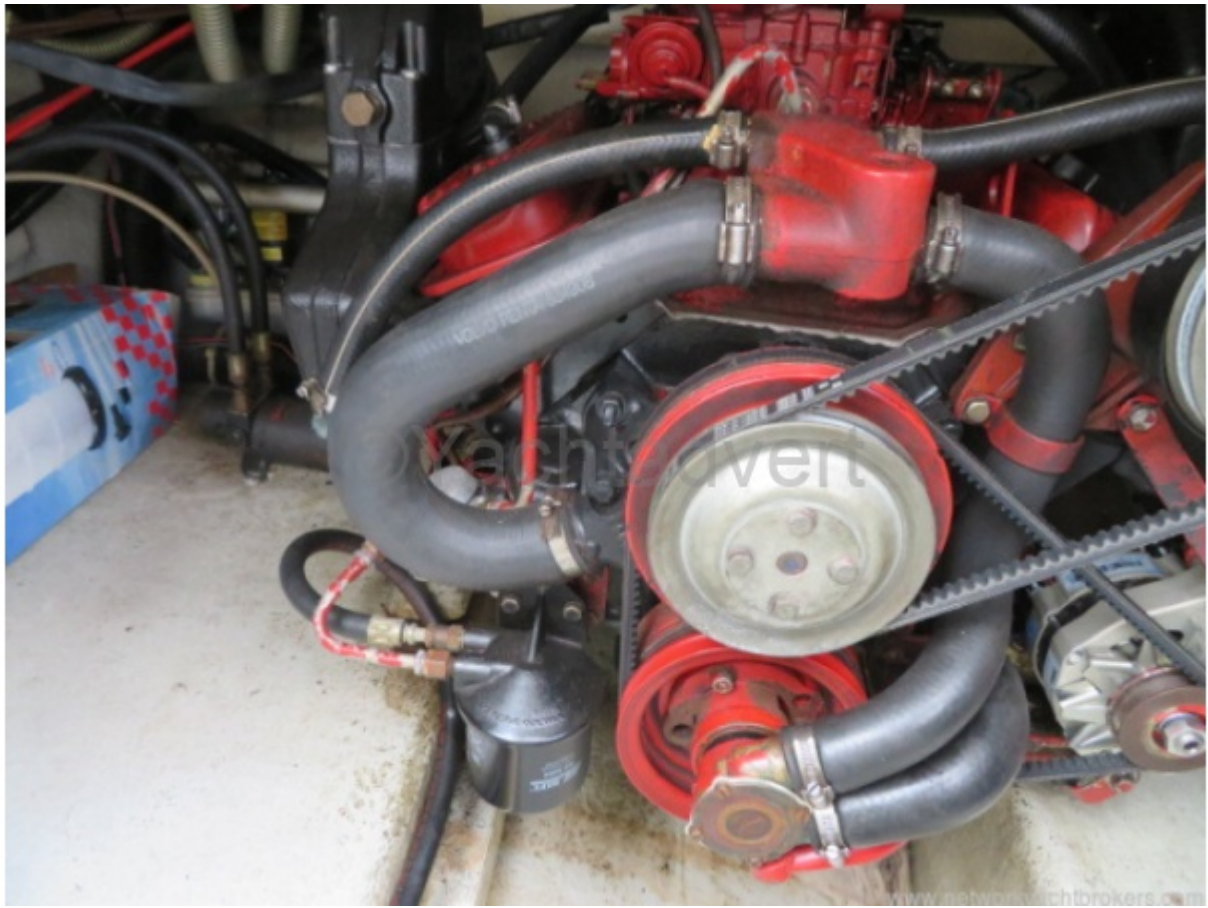
























This vessel is being sold by an ABYA approved broker



www.networkyachtbrokers.com









This motorboat is being sold by an ABYA approved broker



www.networkyachtbrokers.com