



## MC82p - 2026

<https://www.yachtadvert.com/fr/2143-mcconaghy-mc82p.html>

0 à, - ttc



### Général

Année : 2026

Largeur : 10,22 m

Quille : Quille Relevable

Région : ,

Constructeur : McConaghy

Longueur : 23,90 m

Tirant d'eau : 1,10 m

Radeau : Non

Leasing en cours : Non

### Moteurs

Carburant : Diesel

Marque moteur : 2 \* 875HP

Réservoir : 8000 L

## Aménagements

Couchettes : 8

Flybridge : Non

Cabine Marin : 4

Timonerie : Non

---

## électronique

Pilote auto : Non

GPS : Non

VHF : Non

Déssalinisateur : Non

Radar : Non

Sondeur : Non

Traceur de carte : Non

Convertisseur 12/220 : Non

---

## équipement de pont

Hydraulique : Non

Plateforme AR : Non

Taud d'hivernage : Non

Capote de roof : Non

Cockpit en teck : Non

Grand voile sur enrouleur : Non

Passerelle : Non

Bossoirs : Non

Guindeau électrique : Non

Taud cockpit : Non

Pont teck : Non

Génois sur enrouleur : Non

Spinnaker : Non

---

## équipements principaux

Propulseur Arrière : Non

Clim. : Non

Eaux noires : Non

Annexe : Non

Propulseur avant : Non

Groupe élec. : Non

Eau chaude : Non

Flaps : Non

Moteur annexe : Non

---

# électroménager

Congélateur : Non  
Micro-ondes : Non  
Réchaud électrique : Non  
Lave-linge : Non  
Antenne TV : Non  
TV SAT : Non

Glaçons : Non  
Four : Non  
Réchaud gaz : Non  
Chauffage : Non  
Lave-vaisselle : Non  
TV : Non

---

## Divers

The yacht's internal volume has been maximised and every space configured with distinct purpose in a layout that dispels all preconceptions of yacht interiors. The MC82p features a huge saloon lounge with a dining area and open plan galley on the main deck, a spacious aft deck with sofas and al fresco dining space, and a cosy exterior lounge forward of the superstructure.

### Flybridge

On the flybridge there is another informal dining area and freestanding lounge furniture, with sun loungers positioned aft to make the most of the elevated and uninterrupted views. The flybridge itself is sheltered by a fixed bimini with a retractable centre sun roof panel.

### Accommodation

The accommodation arrangement allows for four seaward-facing double cabins, three of which can be converted to twin berths, and there are two additional cabins for crew.

The MC82p is driven from the flybridge. Equipped with twin 875hp Yanmar engines, the yacht will reach a top speed of 28 knots and cruise at 10 knots. With 8,000L tank capacity, the maximum range at a cruising speed of 11kts is 4,000nm.

### Custom

The MC82p carries a 5.7m tender on a hydraulic aft platform, which, with the tender deployed, creates a spacious swim platform or provides additional deck space.

Additional production options include solar power generation, synthetic teak decking, various hull colours, underwater lights and an impressive integrated audiovisual package.

The general arrangement of any McConaghy Multihull can be configured to specifically suit each client's requirements.

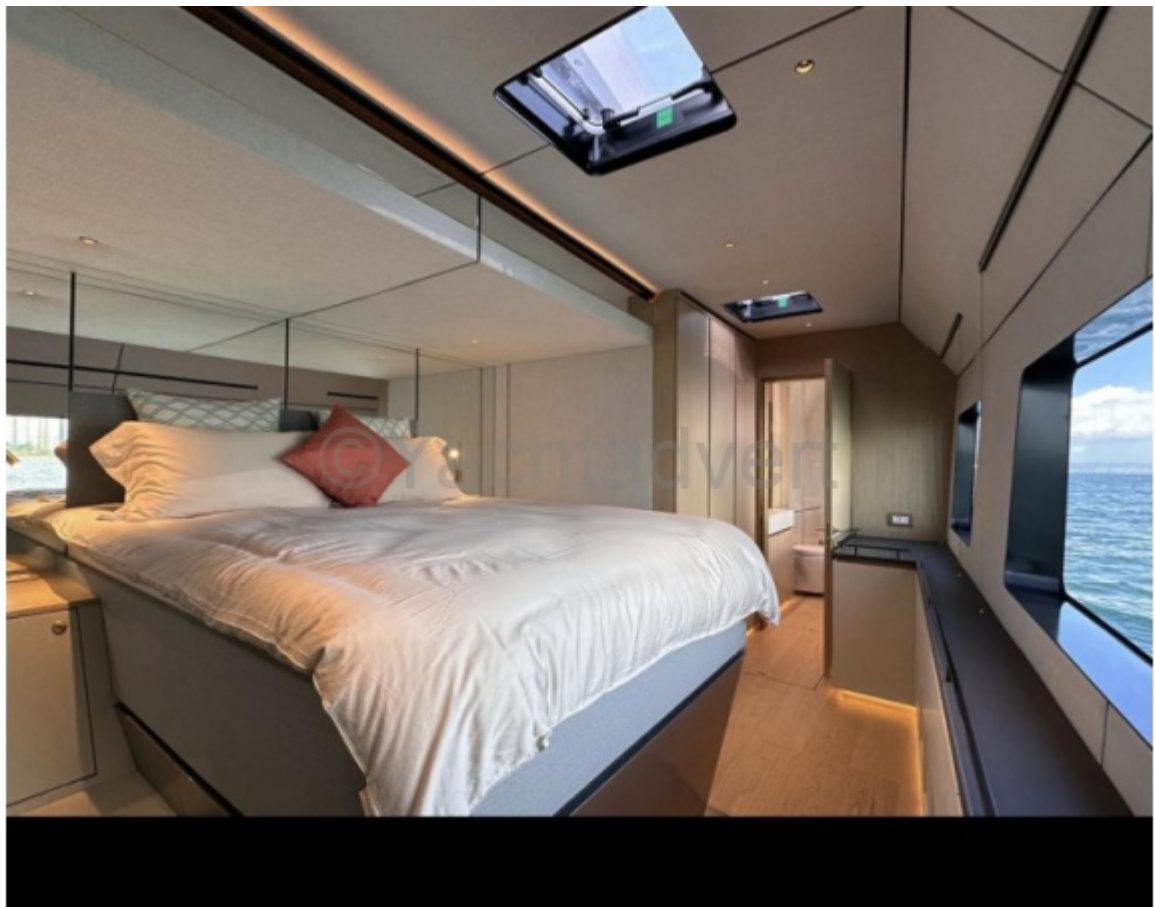












## SPECIFICATIONS

LOA	****	23.9M
BEAM	****	10.22M
DRAFT	****	1.1M
INTERIOR HEADROOM	****	2.0M TO 2.3M
NAVAL ARCHITECT	****	KER YACHT DESIGN
INTERIOR DESIGNER	****	M2ATELIER
STANDARD POWER	****	2 X SCANIA 875HP
FUEL TANKS CAPACITY	****	8,000L
FRESH WATER CAPACITY	****	1,500L
CONSTRUCTION		
E-glass/epoxy/foam sandwich with carbon fibre structural elements		