



Sun Odyssey 490 - 2026

<https://www.yachtadvert.com/fr/2387-jeanneau-sun-odyssey-490.html>

403 548 â,- ttc



Général

Année : 2026

Longueur : 14,63 m

Radeau : Non

Leasing en cours : Non

Constructeur : Jeanneau

Matériau : GRP Poly

Largeur : 4,27 m

Région : Ex Factory, Royaume-Uni

Moteurs

Carburant : Diesel

Puiss. Unit. (CV) : 80

Marque moteur : Yanmar 4JH80CR

Nombre : 1

Aménagements

Flybridge : Non

Timonerie : Non

électronique

Pilote auto : Non

GPS : Non

VHF : Non

Déssalinisateur : Non

Radar : Non

Sondeur : Non

Traceur de carte : Non

Convertisseur 12/220 : Non

équipement de pont

Hydraulique : Non

Plateforme AR : Non

Taud d'hivernage : Non

Capote de roof : Non

Cockpit en teck : Non

Grand voile sur enrouleur : Non

Passerelle : Non

Bossoirs : Non

Guindeau électrique : Non

Taud cockpit : Non

Pont teck : Non

Génois sur enrouleur : Non

Spinnaker : Non

équipements principaux

Propulseur Arrière : Non

Clim. : Non

Eaux noires : Non

Annexe : Non

Propulseur avant : Non

Groupe élec. : Non

Eau chaude : Non

Flaps : Non

Moteur annexe : Non

électroménager

Congélateur : Non
Micro-ondes : Non
Réchaud électrique : Non
Lave-linge : Non
Antenne TV : Non
TV SAT : Non

Glaçons : Non
Four : Non
Réchaud gaz : Non
Chauffage : Non
Lave-vaisselle : Non
TV : Non

Divers

Remarks :

Remarks
This Jeanneau Sun Odyssey 490 presents one of the last opportunities to acquire a brand-new yacht in the form of one of the most popular boats from the Jeanneau yard in recent years, with an extensive factory upgrade specification, available for immediate delivery. Designed by Philippe Briand, the 490 is renowned for combining powerful yet easily managed sailing characteristics with a remarkably refined interior layout, making her equally suited to private ownership or extended cruising.
This example is finished in the desirable owners' 3-cabin, 2-heads layout with Grey Cedar interior, offering excellent volume, natural light, and storage throughout. The shoal draft keel broadens cruising options while maintaining performance, and twin rudders provide confidence and control under sail. On deck, the layout prioritises safe circulation and ergonomic handling, with all lines led aft and key manoeuvring aids such as a retractable bow thruster and electric winches.
The specification has been carefully selected to enhance both comfort and usability. Highlights include the Premiere Trim Level, top-tier Raymarine Electronics Ocean Pack, furling mast, electric transom platform, upgraded galley appliances, and a full entertainment system. Below deck, the saloon and cabins benefit from high-quality finishes, generous headroom, and a modern, open feel.
Offered as a new boat, this yacht can be purchased ex-VAT or inc-VAT, subject to the buyer's circumstances. With availability of new Sun Odyssey 490s now increasingly limited, this represents a compelling and timely opportunity.

This boat can be delivered to the UK or Europe.

Broker's Remarks
From my perspective, this is a particularly strong Sun Odyssey 490 specification and not something that comes along very often. Being brand new and available immediately, she avoids the long factory lead times we're seeing on new builds, while still offering the flexibility of VAT status depending on the buyer.
The upgrade list is extensive and well judged, especially the Electronics Ocean Pack, bow thruster, electric winch, and the overall comfort upgrades below deck. For anyone considering a late-model cruising yacht of this size, this represents a rare chance to step straight into ownership on very attractive terms.

Photos are of sister ship, this boat is brand new, Ex Factory and has never been in the water

Accommodation :

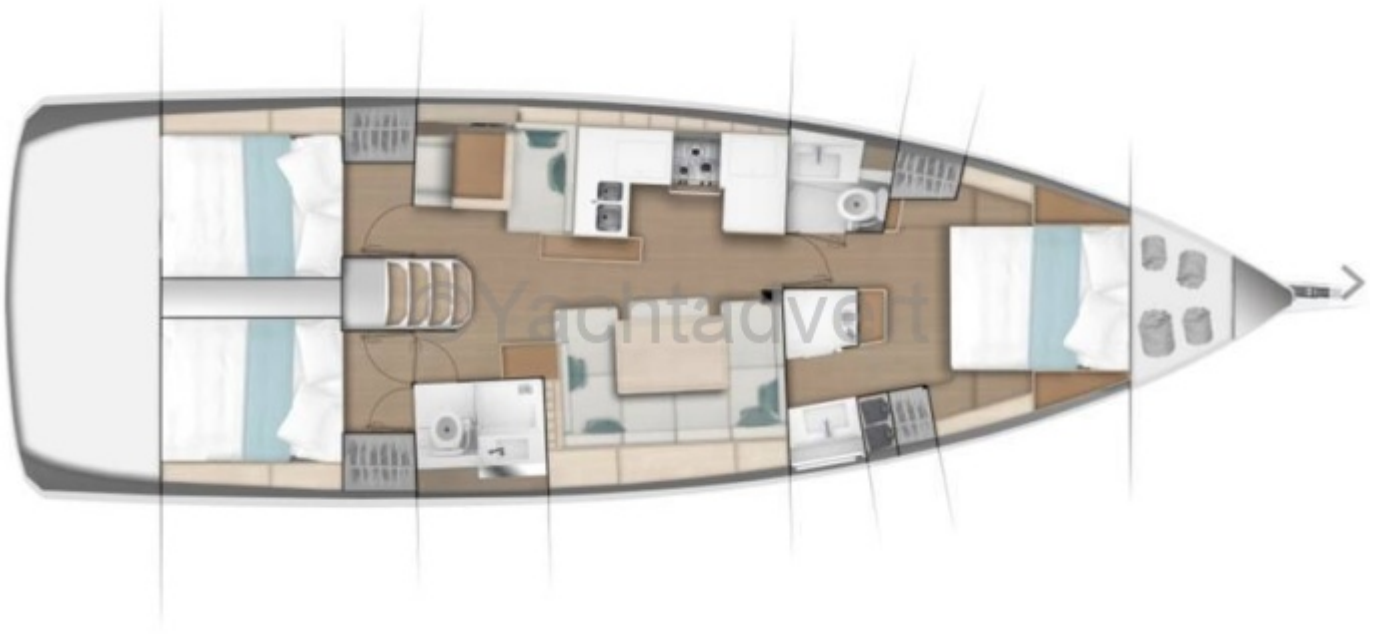
- 451-1498
- 1453-1498
- 1467-1496
- 1453-1498
- 1467-1496

data-end="4877"> <p data-start="4859" data-end="4877">Cockpit speakers</p> <li data-start="4878" data-end="4899"> <p data-start="4880" data-end="4899">Ropes and fenders</p>
Mechanical :
<h2 data-start="371" data-end="389">Hull and Design</h2><ul data-start="390" data-end="672"> <li data-start="390" data-end="428"> <p data-start="392" data-end="428">Infused sandwich hull construction</p> <li data-start="429" data-end="455"> <p data-start="431" data-end="455">Full-length hull chine</p> <li data-start="456" data-end="472"> <p data-start="458" data-end="472">Twin rudders</p> <li data-start="473" data-end="498"> <p data-start="475" data-end="498">Shoal draft iron keel <em data-start="641" data-end="670">(Upgrade – Option Included)</p> <li data-start="499" data-end="554"> <p data-start="501" data-end="554">Turquoise hull stripe</p> <li data-start="555" data-end="590"> <p data-start="557" data-end="590">GRP deck with non-slip surfaces</p> <li data-start="591" data-end="672"> <p data-start="593" data-end="672">GRP bowsprit with stainless steel anchor roller</p> <h2 data-start="679" data-end="700">Engine and Systems</h2><ul data-start="701" data-end="1042"> <li data-start="701" data-end="740"> <p data-start="703" data-end="740">Yanmar 4JH80CR diesel engine – 80hp</p> <li data-start="741" data-end="755"> <p data-start="743" data-end="755">Sail drive</p> <li data-start="756" data-end="783"> <p data-start="758" data-end="783">Fixed 3-blade propeller</p> <li data-start="784" data-end="811"> <p data-start="786" data-end="811">Engine sound insulation</p> <li data-start="812" data-end="858"> <p data-start="814" data-end="858">Engine control panel oriented towards helm</p> <li data-start="859" data-end="916"> <p data-start="861" data-end="916">Extra service batteries <em data-start="885" data-end="914">(Upgrade – Option Included)</p> <li data-start="917" data-end="976"> <p data-start="919" data-end="976">Battery monitoring system</p> <li data-start="977" data-end="1042"> <p data-start="979" data-end="1042">Pre-fitting for battery charger</p> <h2 data-start="1049" data-end="1069">Rigging and Sails</h2><ul data-start="1070" data-end="1498"> <li data-start="1070" data-end="1097"> <p data-start="1072" data-end="1097">Aluminium mast and boom</p> <li data-start="1098" data-end="1115"> <p data-start="1100" data-end="1115">Split rigging</p> <li data-start="1116" data-end="1160"> <p data-start="1118" data-end="1160">Standing rigging in stainless steel wire</p> <li data-start="1161" data-end="1207"> <p data-start="1163" data-end="1207">Furling mast <em data-start="1176" data-end="1205">(Upgrade – Option Included)</p> <li data-start="1208" data-end="1265"> <p data-start="1210" data-end="1265">Dacron furling mainsail <em data-start="1234" data-end="1263">(Upgrade – Option Included)</p> <li data-start="1266" data-end="1286"> <p data-start="1268" data-end="1286">Furling headsail</p> <li data-start="1287" data-end="1314"> <p data-start="1289" data-end="1314">Lazy bag and lazy jacks</p> <li data-start="1315" data-end="1342"> <p data-start="1317" data-end="1342">German mainsheet system</p> <li data-start="1343" data-end="1379"> <p data-start="1345" data-end="1379">Harken deck hardware and winches</p> <li data-start="1380" data-end="1450"> <p data-start="1382" data-end="1450">Electric coachroof winch – port side <em data-start="1419" data-end="1448">(Upgrade – Option Included)</p> <li data-start="1451" data-end="1498"> <p data-start="1453" data-end="1498">Downwind Pack <em data-start="1467" data-end="1496">(Upgrade – Option Included)</p>









networkyachtbrokers.com