



39 Cruiser - 2007

<https://www.yachtadvert.com/fr/2761-bavaria-39-cruiser.html>

79 950 EUR ttc



Général

Constructeur : Bavaria
Longueur : 12,19 m
Tirant d'eau : 0,00 m
Radeau : Non
Leasing en cours : Non

Sous type : Plaisance
Année : 2007
Largeur : 3,96 m
Quille : Quille ailette
Région : Preveza, Grèce

Moteurs

Carburant : Diesel
Puiss. Unit. (CV) : 40

Marque moteur : Volvo Penta D2-40B
Nombre : 1

Aménagements

Flybridge : Non

Timonerie : Non

électronique

Pilote auto : Non

GPS : Non

VHF : Non

Déssalinisateur : Non

Radar : Non

Sondeur : Non

Traceur de carte : Non

Convertisseur 12/220 : Non

équipement de pont

Hydraulique : Non

Plateforme AR : Non

Taud d'hivernage : Non

Capote de roof : Non

Cockpit en teck : Non

Grand voile sur enrouleur : Non

Passerelle : Non

Bossoirs : Non

Guindeau électrique : Non

Taud cockpit : Non

Pont teck : Non

Génois sur enrouleur : Non

Spinnaker : Non

équipements principaux

Propulseur Arrière : Non

Clim. : Non

Eaux noires : Non

Annexe : Non

Propulseur avant : Non

Groupe élec. : Non

Eau chaude : Non

Flaps : Non

Moteur annexe : Non

électroménager

Congélateur : Non
Micro-ondes : Non
Réchaud électrique : Non
Lave-linge : Non
Antenne TV : Non
TV SAT : Non

Glaçons : Non
Four : Non
Réchaud gaz : Non
Chauffage : Non
Lave-vaisselle : Non
TV : Non

Divers

Remarks :

DESCRIPTION
The Bavaria 39 Cruiser is a proven choice for Mediterranean cruising, combining space, simplicity, and reliability in a package that just works. This 2007 example is a well-sorted boat with the right upgrades already in place, making her an easy step into ownership without the usual list of jobs. Below decks, she offers a bright saloon, three double cabins, and two heads, providing comfortable and practical accommodation. On deck, the cockpit is spacious and secure, well suited to time at anchor or under sail. Set up for straightforward handling with in-mast furling and lines led aft, she is ideal for short-handed use. Bow thruster, upgraded electrics, new windlass, and a modern anchoring system all contribute to simple, low-stress operation. With recent additions including a new fridge, portable air conditioning, updated wind gear, and a new tender, she is up to date and ready. Her size, draft, and layout make her particularly well suited to the Ionian, offering easy movement between anchorages and relaxed coastal cruising. A well-equipped yacht that keeps ownership simple and gets you straight on the water.

HIGHLIGHTS:

- Volvo Penta D2-40B engine
- Three cabin, two heads layout
- In-mast furling mainsail
- Bow thruster
- Victron inverter/charger (2022)
- New windlass (2022)
- Rocna 20kg anchor with 100m chain
- Solar panels with gantry
- New fridge (2025)
- Ecoflow Wave 3 air conditioning unit (2025)
- New tender (2025) with Honda 2.3hp outboard (2022)
- Antifouled and polished (2026)

• EU VAT paid

BROKER'S REMARKS
She has benefitted from a series of sensible upgrades in recent years, particularly to the electrical systems, anchoring setup, and overall usability, giving confidence to a new owner and removing much of the usual post-purchase work. Her size, layout, and equipment make her particularly well suited to the Ionian, where straightforward handling and dependable systems are key. A solid, turn-key option in a popular size range, ready for the season.

Accommodation :

- ACCOMMODATION**
- 3 double cabins
 - 2 heads with showers
 - Electric toilets
 - Saloon seating area with table
 - Chart table
 - Hanging lockers (3)
 - Wet locker

LAYOUT
A practical three-cabin layout with two aft cabins and a forward owner's cabin. The saloon is centrally positioned with good seating and natural

light, while the galley and navigation area are conveniently located for use underway or at anchor.

DOMESTIC

Well-equipped galley with hob, oven, sink, and refrigerator (new 2025). Pressurised hot and cold water system via calorifier. Additional onboard comfort provided by Ecoflow Wave 3 portable air conditioning unit (2025). Entertainment includes stereo and TV with aerial.

Inventory :

NAVIGATION

- Chart plotter (2016)

- GPS (2016)

- Autopilot (2016)

- VHF radio (2016)

- Echo sounder (2016)

- Log/speed (2016)

- Wind instruments (new mast light and wind direction 2025)

- Compass

- Barometer

DECK

- Rocna 20kg anchor with 100m chain

- Electric windlass (new 2022)

- Stainless steel pushpit and pulpit

- Boarding ladder

- Swim ladder

- Cockpit table

- Cockpit lockers

- Passerelle (stainless steel/teak)

- Cockpit shower

- Teak cockpit

CANVAS

- Sprayhood

- Bimini

- Cockpit cushions

TENDER

- New tender (2025)

- Honda 2.3HP outboard

(2022)

MISCELLANEOUS

- Stainless steel gantry

- Solar installation

- Various warps and fenders

- Antifouled and polished (2026)

SAFETY

- Liferaft (last serviced 2021)

- EPIRB

- Lifebuoys (2)

- Lifejackets (8)

- Fire extinguishers (3)

- Manual bilge pump

- Electric bilge pump

- Radar reflector

- Fog horn

Mechanical :

CONSTRUCTION

- GRP hull, deck and superstructure

- White hull and superstructure

- Fin keel with bulb

- Spade rudder

- Wheel steering

- Teak cockpit

- Gelcoat finish

DIMENSIONS

- LOA: 11.93m (39ft 2in)

- LWL: 10.70m (35ft 1in)

- Beam: 3.94m (12ft 11in)

- • Draft: 1.85m (6ft 1in)
- • Displacement: 8,283kg
- • Volvo Penta D2-40B diesel engine
- • 40HP
- • Approx. 950 engine hours
- • Saildrive
- • 3-blade fixed propeller (new prop and cone kit 2021)
- • Engine serviced (2021)
- • Bow thruster (5HP)
- • Cruising speed: approx. 7 knots
- • Maximum speed: approx. 9 knots
- • Fuel capacity: 160L
- • Fresh water capacity: 360L
- • Holding tanks: 2
- • Engine battery (2016)
- • Domestic batteries (2 x 140Ah, 2016)
- • Bow thruster battery (140Ah)
- • Victron inverter/charger (2022)
- • Battery charger
- • Battery monitor (2021)
- • Shore power connection
- • Solar panels (approx. 160W)
- • Electrical panel upgraded (2022)
- • Fractional sloop rig
- • Aluminium mast and spars
- • Standing rigging (2007)
- • Running rigging (2016)
- • Lines led aft to cockpit
- • Mainsail – in-mast furling (2017)
- • Genoa (2017)
- • Both sails reported in good condition



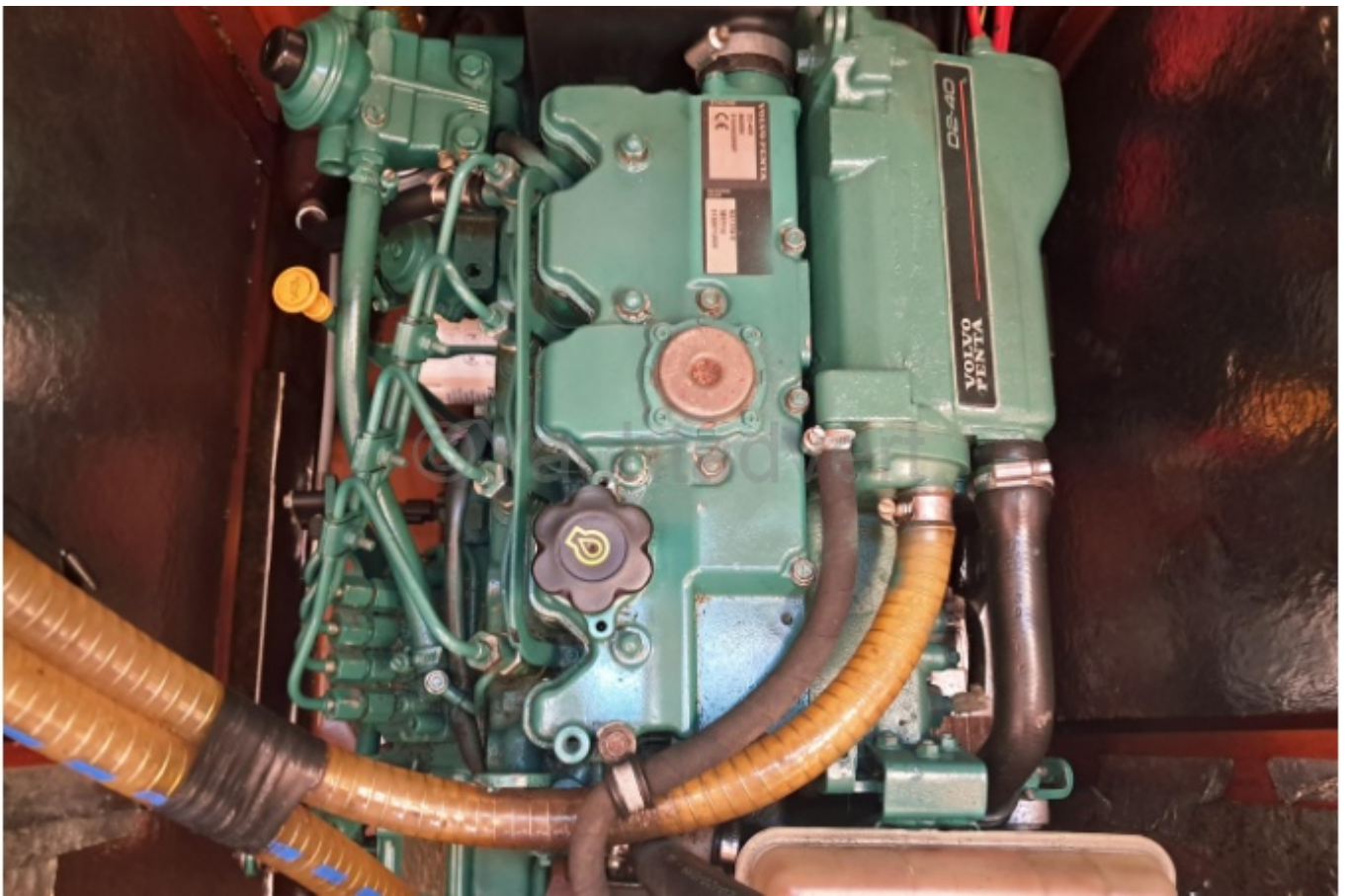






















Bavaria Yachtbau GmbH
Bavariastraße 1: D-97232 Giebelstadt
Sailing Yacht "Bavaria 39 C"
Category A
Max.  = 8
Max.  +  = 1.000 kg
CE 0609

DE-BAVF39V4B707

