



Targa 43 - 2000

<https://www.yachtadvert.com/fr/2859-fairline-targa-43.html>

139 932 â,- ttc



Général

Année : 2000

Longueur : 13,11 m

Radeau : Non

Leasing en cours : Non

Constructeur : Fairline

Matériau : GRP Poly

Largeur : 3,66 m

Région : Dover Marina, Kent, Royaume-Uni

Moteurs

Carburant : Diesel

Puiss. Unit. (CV) : 480

Marque moteur : Volvo Penta TAMD 74P

Nombre : 2

Aménagements

Flybridge : Non

Timonerie : Non

électronique

Pilote auto : Non

GPS : Non

VHF : Non

Déssalinisateur : Non

Radar : Non

Sondeur : Non

Traceur de carte : Non

Convertisseur 12/220 : Non

équipement de pont

Hydraulique : Non

Plateforme AR : Non

Taud d'hivernage : Non

Capote de roof : Non

Cockpit en teck : Non

Grand voile sur enrouleur : Non

Passerelle : Non

Bossoirs : Non

Guindeau électrique : Non

Taud cockpit : Non

Pont teck : Non

Génois sur enrouleur : Non

Spinnaker : Non

équipements principaux

Propulseur Arrière : Non

Clim. : Non

Eaux noires : Non

Annexe : Non

Propulseur avant : Non

Groupe élec. : Non

Eau chaude : Non

Flaps : Non

Moteur annexe : Non

électroménager

Congélateur : Non
Micro-ondes : Non
Réchaud électrique : Non
Lave-linge : Non
Antenne TV : Non
TV SAT : Non

Glaçons : Non
Four : Non
Réchaud gaz : Non
Chauffage : Non
Lave-vaisselle : Non
TV : Non

Divers

Remarks :

Fairline Targa 43 Built in 2000 for sale in Kent & pound;119,950

Fairline Targa 43 available in Kent – a good example of this ever-popular sports cruiser, built in 2000 and currently lying in Dover Marina. Combining sleek, timeless lines with confident offshore performance, the Targa 43 remains one of the most desirable models in her class.<p><p>This particular boat is powered by twin Volvo Penta TAMD 74P 480HP shaft-drive diesel engine. No money has been spared on making sure that this motor yacht has been well-maintained and updated. <p><p>She comfortably accommodates up to six guests in two well-appointed cabins, with additional berths in the saloon. The cockpit is generous and sociable, perfectly suited to entertaining, whether underway or in the marina.<p><p>Maintained to a high standard by her long-standing previous owner and the current owner, this Targa 43 reflects Fairline’s renowned build quality throughout. A berth in Dover Marina may be available by separate negotiation. Offered for sale due to a change in circumstances, she presents a superb opportunity to acquire a capable and stylish cruising boat. This vessel is just being prepared , May 2026, for the current season. <p><p>For further details or to arrange a viewing, please contact our Kent Office on +44 (0)1634 571605.</p>

Accommodation :

This well-appointed Fairline Targa 43 delivers spacious and comfortable accommodation for up to six guests across two cabins, with additional berthing available in the saloon. The interior benefits from generous headroom. It has air conditioning fitted with outlets in the Saloon and Forward cabin. <p><p>Forward Cabin
Positioned in the bow, the owner’s cabin features a centreline double berth with practical storage below, complemented by a full-length mirror, hanging locker, and additional cupboards. Natural light and airflow are provided by an opening deck hatch and twin portlights. Direct access leads to the private en suite facilities.<p><p>En Suite Facilities

The forward heads compartment is thoughtfully arranged with an electric flush toilet, enclosed shower with screen and extractor, wash basin, mirror, and useful locker storage.<p><p>Saloon

The main saloon is designed for both relaxation and entertaining, with a sociable U-shaped seating area to starboard, and a folding-leaf table. Storage is cleverly integrated beneath seating and within overhead lockers. A built-in audio system adds to the ambience, while a combination of portlights and an overhead hatch ensures a bright, airy space.<p><p>Galley

Situated to port and open to the saloon, the galley is both practical and stylish. It is equipped with a two-burner ceramic hob, a combination microwave/grill, a large dual-voltage refrigerator, and twin sinks with covers. Storage is plentiful, with dedicated space for crockery and an integrated cocktail cabinet. There is a full suite of Fairline Crockery that is being sold with the vessel.<p><p>Day Heads

A second heads compartment serves guests and the aft cabin, featuring an electric toilet, separate shower area, basin, mirror, and storage.<p><p>Aft Cabin

The guest cabin aft offers twin single berths with under-bed storage, along with a wardrobe, compact seating area, dressing space, mirrored lockers, and overhead storage. Two portlights provide natural light and ventilation.<p><p>Interior Finish & amp; Systems

The interior is finished in warm cherry wood cabinetry paired with cream leather upholstery, creating a classic yet inviting feel. A pressurised hot and cold water system is supplied via a calorifier with immersion capability when on shore power.

The teak-laid cockpit is designed for both helm control and socialising. The helm station to starboard features an adjustable seat, while opposite is a forward-facing navigator's position with chart storage. Aft, a generous C-shaped seating area surrounds a table that converts into a sunpad, complemented by a wet bar with refrigeration to port. Further aft, a large sunpad sits above the tender garage, which is capable of housing an inflatable dinghy and outboard. Additional storage is provided in a starboard locker with access to onboard systems. The cockpit is enclosed by a full canopy, with sections that can be opened or converted to a bimini. It has an electric retractable passerelle. Access to the teak bathing platform is via a walk-through transom, where you'll find a hot and cold shower and a neatly concealed swim ladder—ideal for enjoying time on the water.

Inventory :

Safety Equipment

- 1 x Automatic Fire Extinguishers in the engine bay
- 2 x Fire Extinguishers in the saloon
- Fire Blanket
- Deck Light
- 1 x Horseshoe Lifebuoys
- Radar reflector
- Foghorn
- 3 x Electric bilge pumps with alarm
- 1 x First Aid Kit

Navigation Equipment

- Steering compass - Ritchie
- Depth/Speed/Log – Raymarine ST60 Tridata
- VHF Radio – DSC – ICOM M400BB
- GPS – Raymarine
- Chartplotter – Raymarine Axiom 7 with Electronic Chart
- AIS Receiver – Raymarine
- AIS Transponder – Raymarine IS 700
- Autopilot – Raymarine
- Radio/CD player - with saloon and cockpit speakers
- Navigation lights – Deck level
- Anchor light

Deck Equipment

- Anchor – with chain
- Windlass – Electric with remote at the helm and forward
- Sunpad cushions
- Search light
- Bathing platform
- Swim ladder – stainless steel
- 4 x Mooring warps
- 8 x Fenders
- 2.3m Inflatable dinghy
- Outboard - Mercury 3.5

Keel/Hull: Deep V planing hull with hydraulic wheel steering

History & Construction: Built in 2000, this Fairline Targa 43 has a white and blue painted GRP hull and decks with non-slip surfaces. It has a teak deck in the aft cockpit area. Wheel steering. Stainless steel stanchions, pulpit. Glass windscreen with black bonded surround. Walk through the transom gates to the bathing platform. Teak battens to the bathing platform. Self-draining cockpit. Last out of the water in May 2026 when she was scraped back, primed and antifouled, hull polished, and anodes changed. She has been owned by the current owner since August 2019. The owner is selling due to a lifestyle change.

Title Documents: When preparing these details, we have seen the following documentation:

- Bill of Sale in the owner's name.
- Previous Bills of Sale back to the date of purchase
- Declaration of Conformity to the Recreational Craft Directive.
- The invoice showing VAT has been paid at the time of purchase.
- Proof of location on 31st December 2020.
- Invoices for work completed on the vessel.

Marine Insurance: As one of the UK's largest Brokers with over 700 boats for sale, we can introduce you to Boat Insurance providers that offer all types of Boat Insurance, including insurance for Yachts, Sailing Boats, Motor Cruisers, Narrowboats, Inland Waterway Craft, Barges, Houseboats, Speedboats, Rigid Inflatable Boats, Waterski Boats, Jet Skis, Personal Watercraft and Dinghies.

Just click on the following link to request an insurance quote for this boat or your current boat: www.networkyachtbrokerskent.co.uk/marineinsurance/

Mechanical :

Mechanical Systems:

Located beneath the cockpit sole are twin Volvo Penta TAMD74P 480hp 6-cylinder turbo diesel engines, with circa 750 hours run. Engines last full serviced in 2022 when the starboard engine turbo was replaced. Features include EDC electronic dual-lever controls, hydraulic power steering, twin stainless-steel shafts new in 2023, with fixed 4-blade propellers new in 2023, full engine instrumentation, Sleipner bow thruster serviced in 2023 and hydraulic trim tabs. Last out-of-water service April 2026, including antifoul and routine maintenance. Two aluminium fuel

tanks with a total capacity of 1060L. Starboard fuel tank last cleaned in 2025. All fuel filters were changed in June 2025. Cruising speed of approximately 32 knots and a top speed of approximately 38 knots. Fuel and oil filters were changed May 2026.

Electrical Systems:

6 x 12v Batteries (4 x 12 Domestic new 2022, 2 x Engine start batteries) charged via engine alternators, 240v Shorepower system with ring mains, battery charger, and 240V immersion heater coil. 12v Sockets. Full cabin and cockpit blue LED lighting. Electrical distribution panel with amp and volt meters.













www.networkyachtbrokers.com



www.networkyachtbrokers.com































www.networkyachtbrokers.com



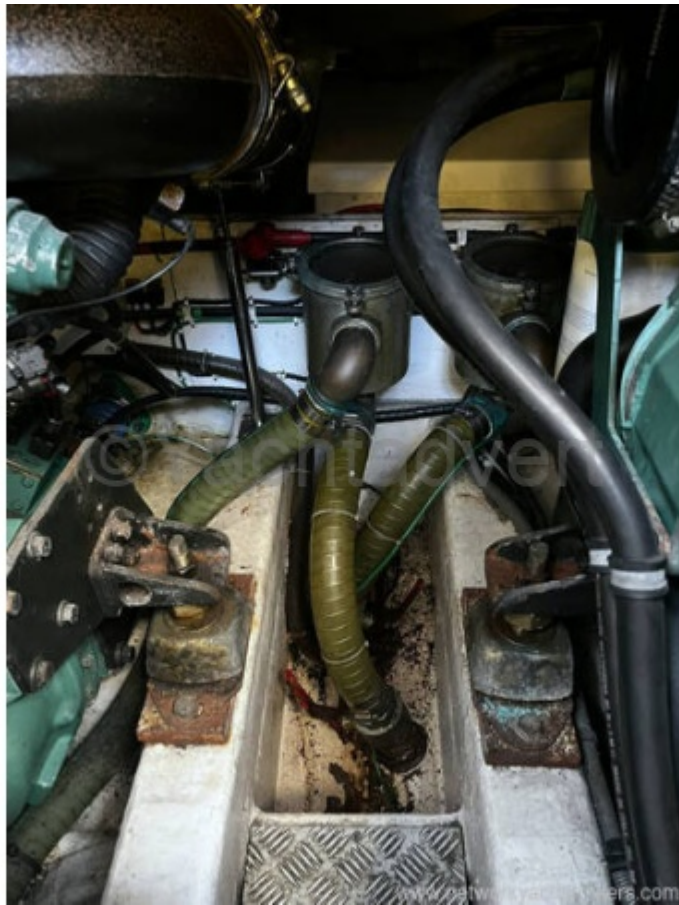
www.networkyachtbrokers.com



























www.networkyachtbrokers.com



www.networkyachtbrokers.com