



440 Fly - 2010

<https://www.yachtadvert.com/fr/549-galeon-440-fly.html>

285 000 â,- ttc



Général

Année : 2010
Longueur : 13,72 m
Coque : Monocoque
Région : , Allemagne

Constructeur : Galeon
Matériau : GRP Poly
Largeur : 4,10 m
Radeau : Non
Leasing en cours : Non

Moteurs

Modèle : 6 kW
Nombre : 3
Heures : 340

Marque moteur : Generator
Carburant : Diesel
Puiss. Unit. (CV) : 8
Réservoir : 1500 L

Aménagements

WC : Marin
Timonerie : Oui

Cabine Double : 3
Couchettes : 6
Flybridge : Non

électronique

Pilote auto : Non
GPS : Non
VHF : Non
Déssalinisateur : Non

Radar : Oui
Sondeur : Oui
Traceur de carte : Non
Convertisseur 12/220 : Non

équipement de pont

Hydraulique : Non
Plateforme AR : Non
Taud d'hivernage : Non
Capote de roof : Non
Cockpit en teck : Non
Grand voile sur enrouleur : Non

Passerelle : Non
Bossoirs : Non
Guindeau électrique : Non
Taud cockpit : Non
Pont teck : Non
Génois sur enrouleur : Non
Spinnaker : Non

équipements principaux

Propulseur Arrière : Oui
Clim. : Non
Eaux noires : Non
Annexe : Non

Propulseur avant : Oui
Groupe élec. : Non
Eau chaude : Non
Flaps : Non
Moteur annexe : Non

électroménager

Réfrigérateur : 1

Four : Non

Réchaud gaz : Non

Chauffage : Non

Lave-vaisselle : Non

TV : Oui

Glaçons : Non

Congélateur : Oui

Micro-ondes : Oui

Réchaud électrique : Non

Lave-linge : Non

Antenne TV : Non

TV SAT : Non

Divers

The Galeon 440 Fly from 2010 is a luxurious flybridge motor yacht that impresses with its thoughtful design, exceptional craftsmanship, and premium features. With its spacious flybridge, it offers an outstanding driving experience and excellent all-around visibility. The spacious salon, outfitted with high-quality materials, creates a refined and comfortable atmosphere. Three comfortable cabins provide sleeping accommodations for up to six people, while the well-equipped galley, featuring a stove, sink, and refrigerator, ensures maximum convenience for extended stays onboard. The generous cockpit with premium seating invites relaxation, while the swim platform allows for easy water access. Powered by high-performance engines, the Galeon 440 Fly delivers both smooth cruising and sporty maneuverability. Thanks to state-of-the-art navigation and safety systems, this yacht is ideal for extended coastal cruises or open-water adventures. Contact us today for more information or to schedule a viewing!

Deck Equipment: Stainless steel guardrail with open bow access; Stainless steel stern railing; Fender holders on the bow railing; Deck hatch; Anchor locker; Anchor with chain; Anchor winch; Sunbed on the bow area; Windshield wiper; Integrated swim platform; Swim ladder; Hydraulic gangway; Mount for outboard motor at the stern; Teak deck on the swim platform; Teak deck in the cockpit; Teak deck on the steps to the flybridge; Teak deck on the flybridge; Cockpit cover; Flybridge cover; Bimini top; Foldable equipment mast; Wet bar on the flybridge with sink; **Salon | Cabins | Bathrooms:** 3 cabins; Forward cabin with large double bed; Midship guest cabins; 2

bathrooms</p><p> âœ“ 2x electric
toilet</p><p> âœ“ 2x
washbasin</p><p> âœ“ 2x separate
shower</p><p></strong style="font-size:
12px;">Kitchen:</p><p> âœ“ Ceramic
cooktop</p><p> âœ“
Microwave</p><p> âœ“
Refrigerator</p><p> âœ“
Sink</p><p></strong style="font-size: 12px;">Audio |
TV:</p><p> âœ“ TV in the
salon</p><p> âœ“ SAT-TV antenna
&quot;Raymarine&quot;</p><p></strong style="font-size: 12px;">Water | Climate |
Heating:</p><p> âœ“ Heating
&quot;Webasto&quot;</p><p></strong style="font-size: 12px;">Navigation |
Communication:</p><p> âœ“ Chart
plotter &quot;Raymarine&quot;</p><p>
âœ“ Digital radar &quot;Raymarine&quot;</p><p></span style="font-size:
12px;"> âœ“ VHF radio
&quot;Raymarine&quot;</p><p>
âœ“ Compass</p><p></strong style="font-size:
12px;">Electrics:</p><p> âœ“ 220V
LAN connection</p><p> âœ“ Battery
charger</p><p> âœ“ Diesel
generator</p><p></strong style="font-size:
12px;">Technology:</p><p> âœ“ Bow
thruster &quot;Side-Power&quot;</p><p>
âœ“ Stern thruster &quot;Side-Power&quot;</p><p></span
style="font-size: 12px;"> âœ“ Trim tabs</p><p></strong style="font-size:
12px;">Safety:</p><p> âœ“ Bilge
pump</p><p> âœ“ Fire
extinguisher</p><p> âœ“
Horn</p></p></p>



Archivbild



Archivbild

















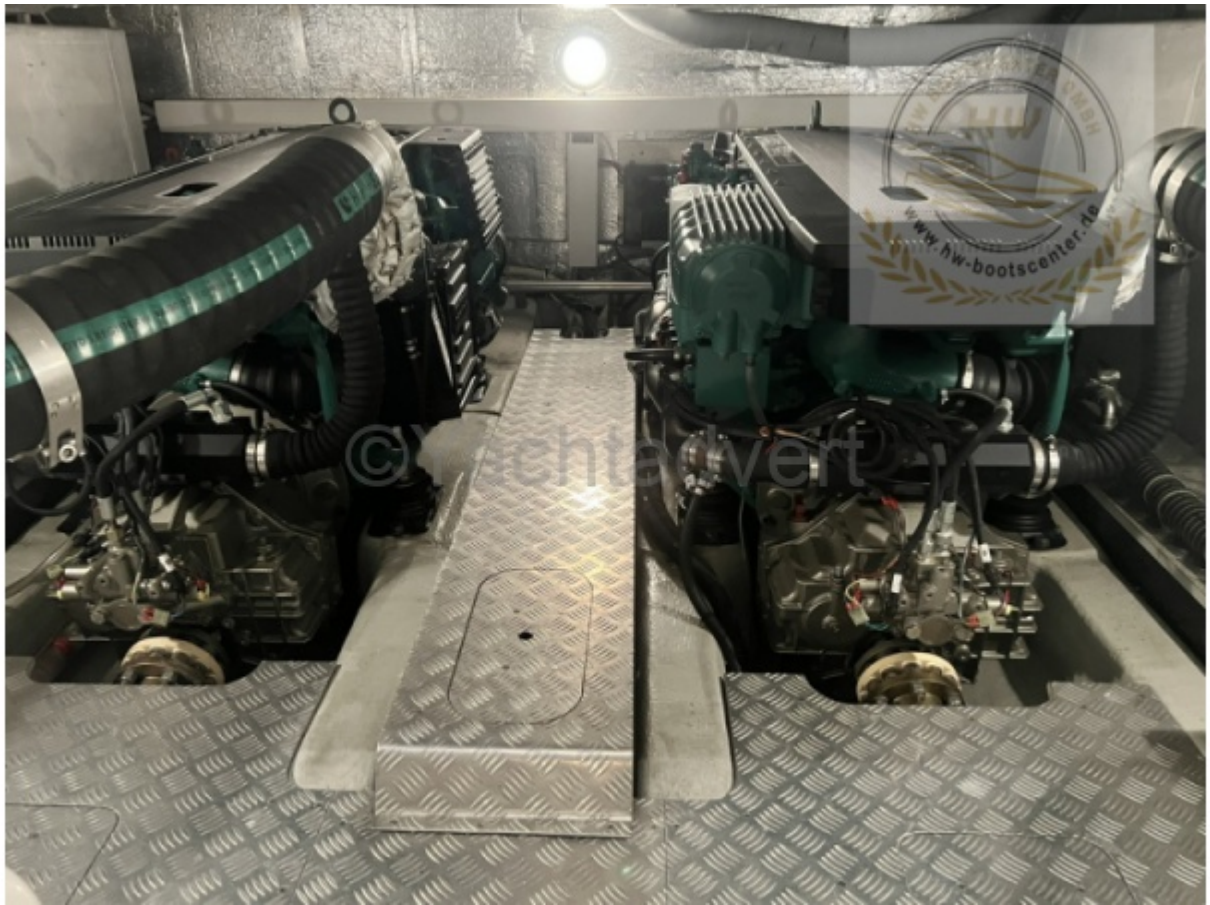


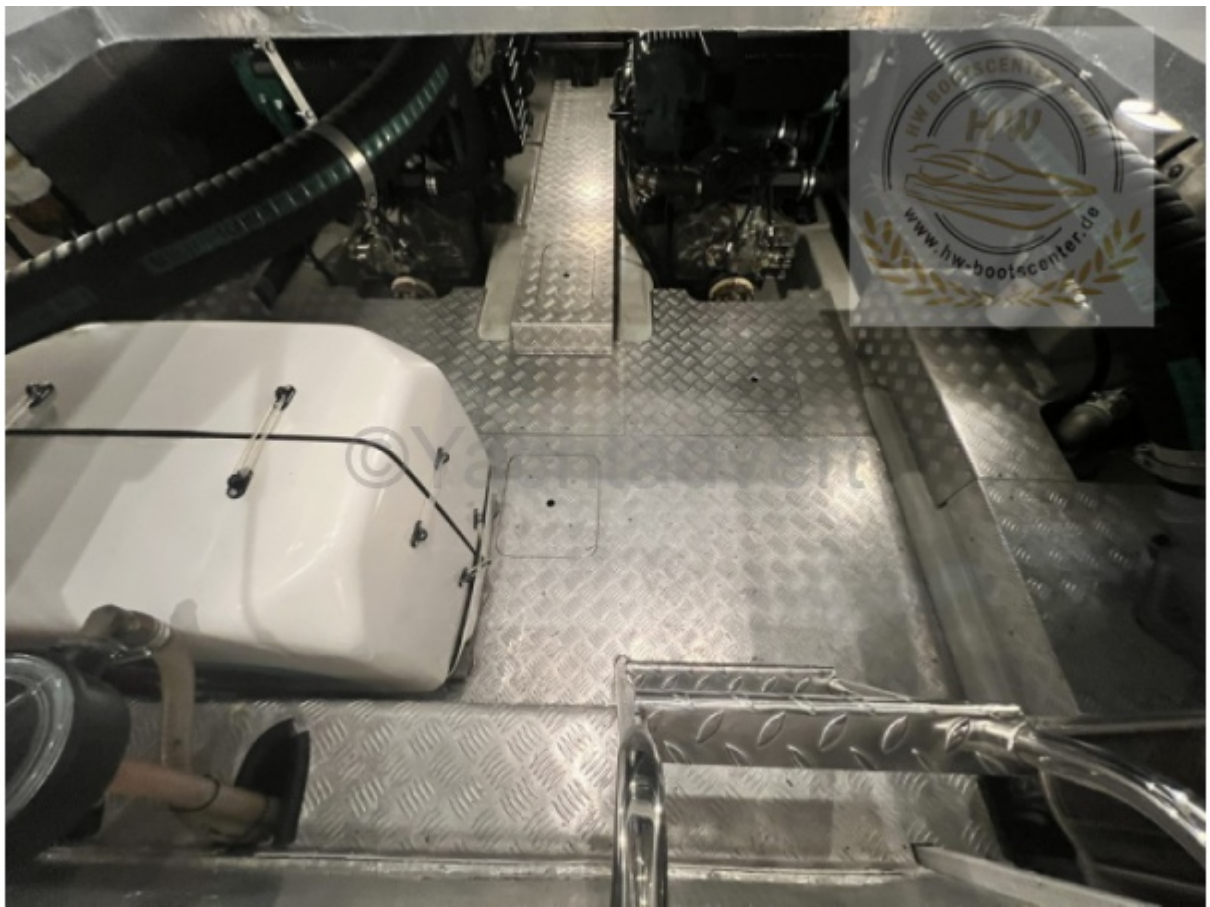
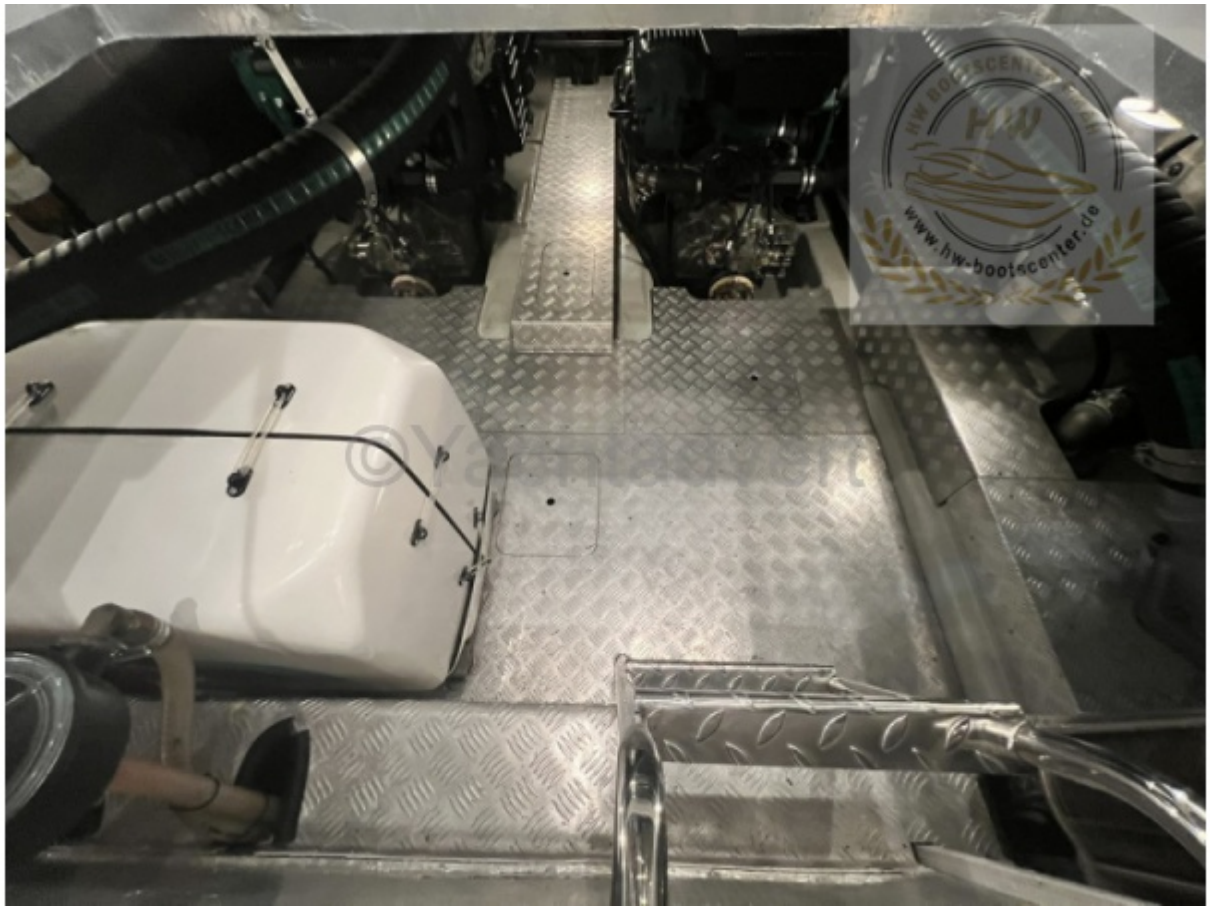




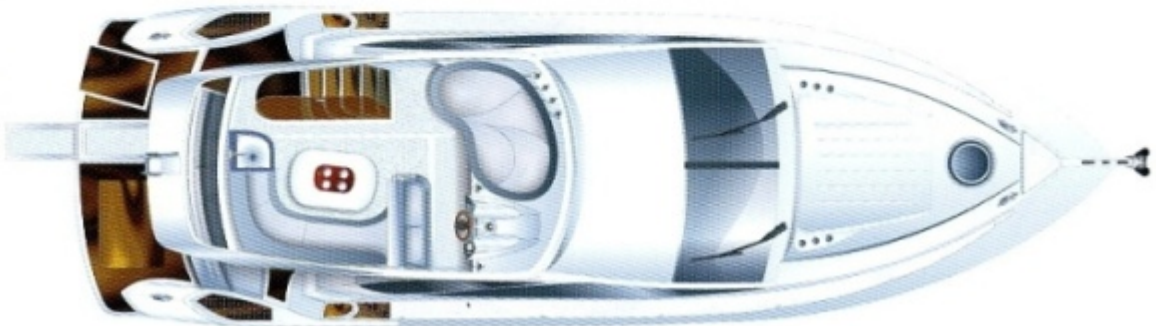
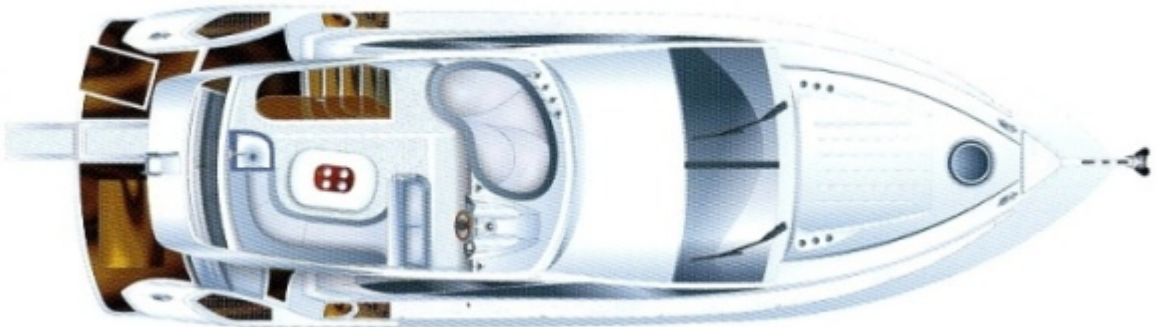






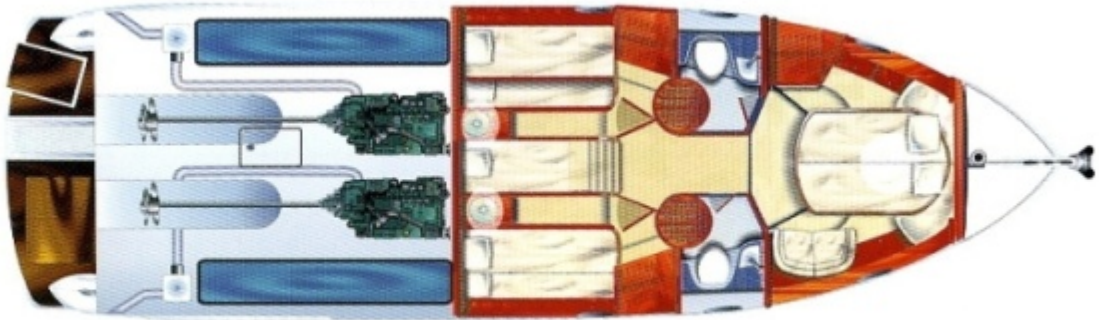




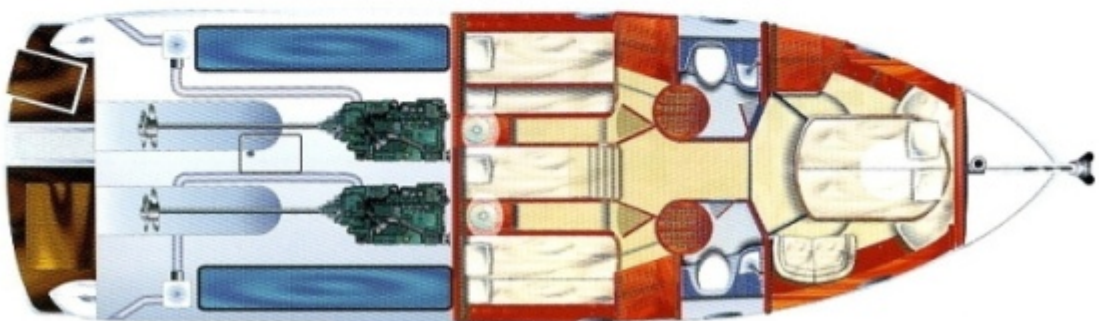




©Yachtadvert

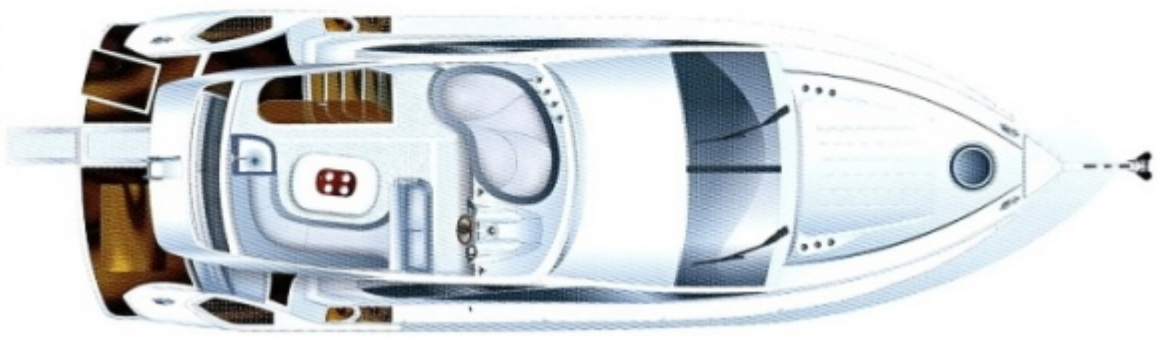


©Yachtadvert











©Yachtadvert

