



Super 30 - 1970

<https://www.yachtadvert.com/fr/744-seamaster-super-30.html>

19 090 â,- ttc



Général

Année : 1970

Longueur : 30,00 m

Radeau : Non

Leasing en cours : Non

Constructeur : Seamaster

Matériau : GRP Poly

Largeur : 11,00 m

Région : Rochester, Royaume-Uni

Moteurs

Carburant : Diesel

Puiss. Unit. (CV) : 50

Marque moteur : Perkins

Nombre : 2

Aménagements

Flybridge : Non

Timonerie : Non

électronique

Pilote auto : Non

GPS : Non

VHF : Non

Déssalinisateur : Non

Radar : Non

Sondeur : Non

Traceur de carte : Non

Convertisseur 12/220 : Non

équipement de pont

Hydraulique : Non

Plateforme AR : Non

Taud d'hivernage : Non

Capote de roof : Non

Cockpit en teck : Non

Grand voile sur enrouleur : Non

Passerelle : Non

Bossoirs : Non

Guindeau électrique : Non

Taud cockpit : Non

Pont teck : Non

Génois sur enrouleur : Non

Spinnaker : Non

équipements principaux

Propulseur Arrière : Non

Clim. : Non

Eaux noires : Non

Annexe : Non

Propulseur avant : Non

Groupe élec. : Non

Eau chaude : Non

Flaps : Non

Moteur annexe : Non

électroménager

Congélateur : Non
Micro-ondes : Non
Réchaud électrique : Non
Lave-linge : Non
Antenne TV : Non
TV SAT : Non

Glaçons : Non
Four : Non
Réchaud gaz : Non
Chauffage : Non
Lave-vaisselle : Non
TV : Non

Divers

Remarks :

The Seamaster Super 30, is a popular, and sturdy motor cruiser with spacious and comfortable accommodation for a boat of her size. She has basic equipment onboard, hull polished and anodes changed. Being sold as the owner has not the time to use the boat, some modifications are in progress and need to be finished off. Mooring is available. A 2021 survey report is available on request, recommendations have been completed.

Please call our Kent Office on +44 (0)1634 571605 to arrange a viewing

Accommodation :

The Seamaster Super 30 offers four berths in two cabins. The aft cabin has been converted for more seating will accommodate one person sleeping, with a hanging locker to starboard, dressing table. It has an ensuite heads compartment with a marine toilet (180 litre holding tank) and sink with pressurised cold water.

In the Wheelhouse the helm is to Port with a folding pilot seat, full instrumentation and controls. There is a bench seat aft to port and starboard with lockers beneath.

Steps take you down to the saloon with a dinette to port which can easily seat 4 people. and galley opposite. There is a drinks cabinet which forms part of the dinette.

The galley is equipped with a 2 burner electric hob with grill, with lots of storage lockers. The sink (not fitted) with pressured cold water.

Forward of the saloon is the forward cabin that has a V berth and a hanging locker for storage of cloths etc.

Inventory :

Navigation Equipment

- Depth - Navico DS150
- Speed/Log - Navico DS 150
- VHF Radio - Swift Tech
- Deck level Navigation lights

Safety Equipment

- 1 x Fire Extinguisher
- 3 x Horseshoe rings
- 1 x Manual Bilge pump
- 1 x Electric bilge pump

Deck Equipment

- Large anchor with chain
- Windlass - manual
- Sprayhood - fixed
- Canvass cockpit enclosure
- 6 x Fenders
- 3 x Mooring warps

Keel/Hull

- Semi displacement with twin rudders

History and Construction

She could be used as a live aboard and subject to the marinas approval a live board berth is available or she is ideal for river and coastal cruising. Built in 1970 the Seamaster Super 30 was built by Seamaster to their own design, It has a white semi-displacement GRP Hull and super structure with styling stripes. She has blue painted decks with wooden rubbing strake, tea and teak faced ply interior and wheeled steering.

Mechanical :

Mechanical Systems

This Seamaster Super 30 is powered by twin Perkins 4108 naturally aspirated diesel engines with shafts leading to three bladed bronze props. She has single lever controls. She has twin fuels tanks storing approximately 360 litres of fuel. She has a maximum speed of approx 14 knots and will cruise at 9 knots. Last out of water maintenance July 2021.

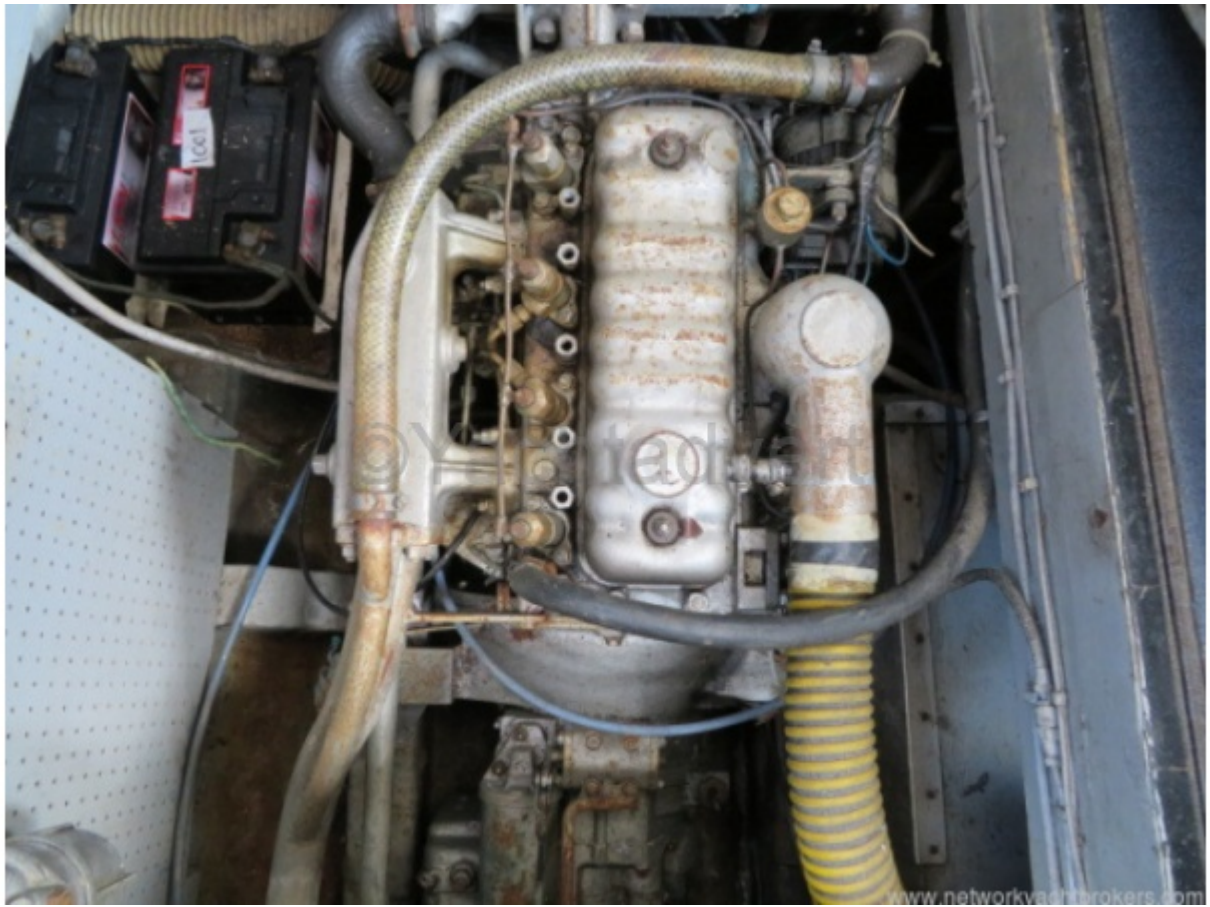
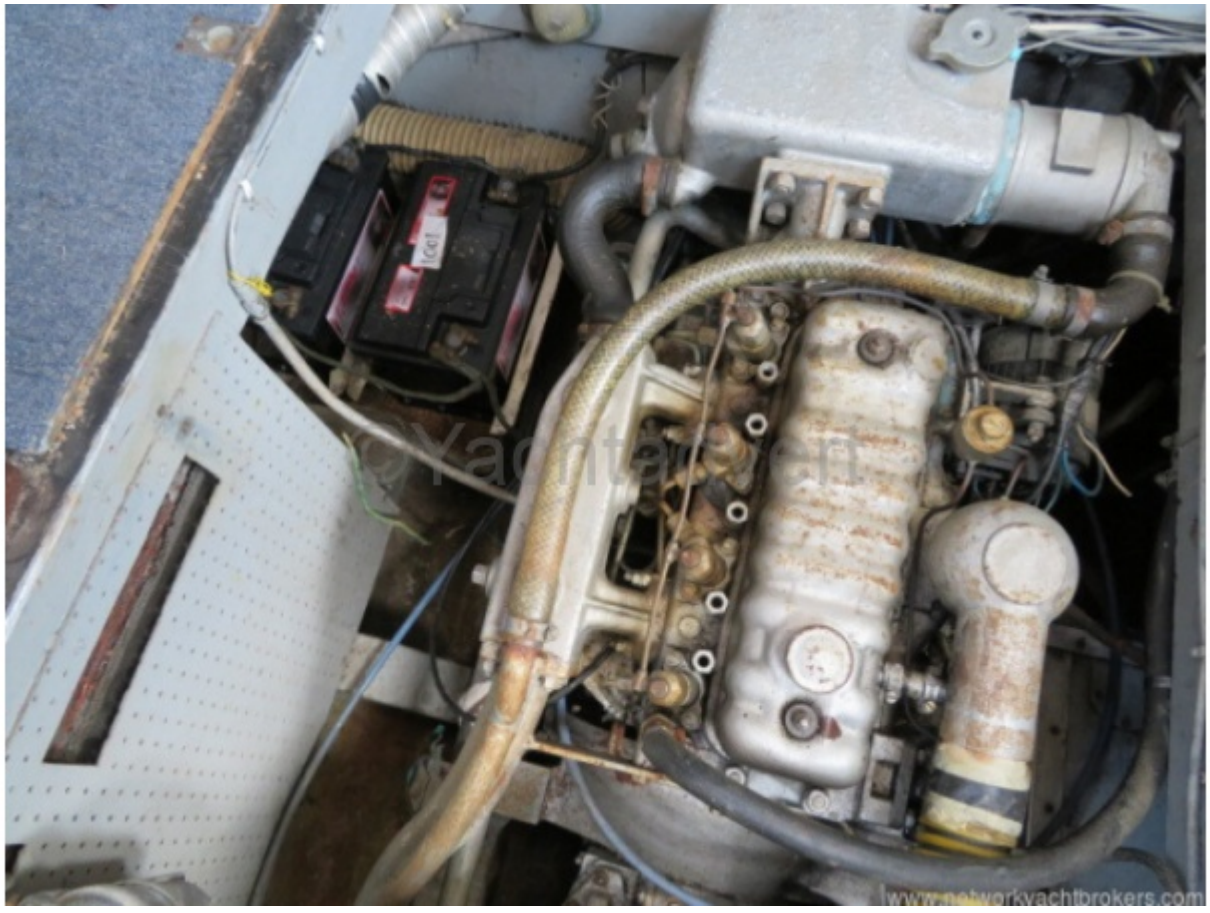
Electrical Systems

4 x 12V batteries (2 x engine and 2 x domestic) charging from engine alternators and via 240 volt shore power battery charger. There is a 240 volt ring main system with plus in most cabins.

Médias











www.networkvachtbrokers.com



www.networkvachtbrokers.com

