



33 - 1982

<https://www.yachtadvert.com/fr/747-marieholm-33.html>

23 134 â,- ttc



Général

Constructeur : Marieholm

Matériau : GRP Poly

Largeur : 2,74 m

Région : Gillingham, Royaume-Uni

Sous type : Plaisance

Année : 1982

Longueur : 9,75 m

Radeau : Non

Leasing en cours : Non

Moteurs

Carburant : Diesel

Puiss. Unit. (CV) : 27

Marque moteur : Vetus

Nombre : 1

Aménagements

Flybridge : Non

Timonerie : Non

électronique

Pilote auto : Non

GPS : Non

VHF : Non

Déssalinisateur : Non

Radar : Non

Sondeur : Non

Traceur de carte : Non

Convertisseur 12/220 : Non

équipement de pont

Hydraulique : Non

Plateforme AR : Non

Taud d'hivernage : Non

Capote de roof : Non

Cockpit en teck : Non

Grand voile sur enrouleur : Non

Passerelle : Non

Bossoirs : Non

Guindeau électrique : Non

Taud cockpit : Non

Pont teck : Non

Génois sur enrouleur : Non

Spinnaker : Non

équipements principaux

Propulseur Arrière : Non

Clim. : Non

Eaux noires : Non

Annexe : Non

Propulseur avant : Non

Groupe élec. : Non

Eau chaude : Non

Flaps : Non

Moteur annexe : Non

Inflatable Boats, Waterski Boats, Jet Skis, Personal Watercraft and Dinghies.

Just click on the following link to request an insurance quote for this boat or your current boat: www.networkyachtbrokerskent.co.uk/marineinsurance/

Mechanical :

Sails & Spars:

Fractional rigged sloop. Seldon deck stepped alloy mast and boom (2001) with slab reefing, with 3 reefs, gas rod kicker, stack pack.

Winches

- 4 x Sheet winches – Anderson S46
- 2 x Halyard winches – Antall ST16, Self-tailing

Sails

- Mainsail – Channon Sails, Dacron, 2004
- Headsail with clewboard – Kemp, self-tacking, 2012
- Spare Headsail

Mechanical Systems:

Powered by a Vetus 27HP M3.09 diesel engine, run for less than 100 hours and located under the companion way steps. The Engine was manufactured between 2001 and 2006 and we believe fitted from new around that time. Features morse throttle controls, shaft driven and indirect cooling. This Marieholm 33 reaches a cruising speed of 5.5Kn and a max speed of 6.5Kn.

Electrical Systems:

3 x 12v batteries, 2 x domestic and 1 x engine start (2018). This yacht's 240 volt systems are shore power connection ring mains, immersion heater and a battery controller. The stern is also fitted with a 25w solar panel.







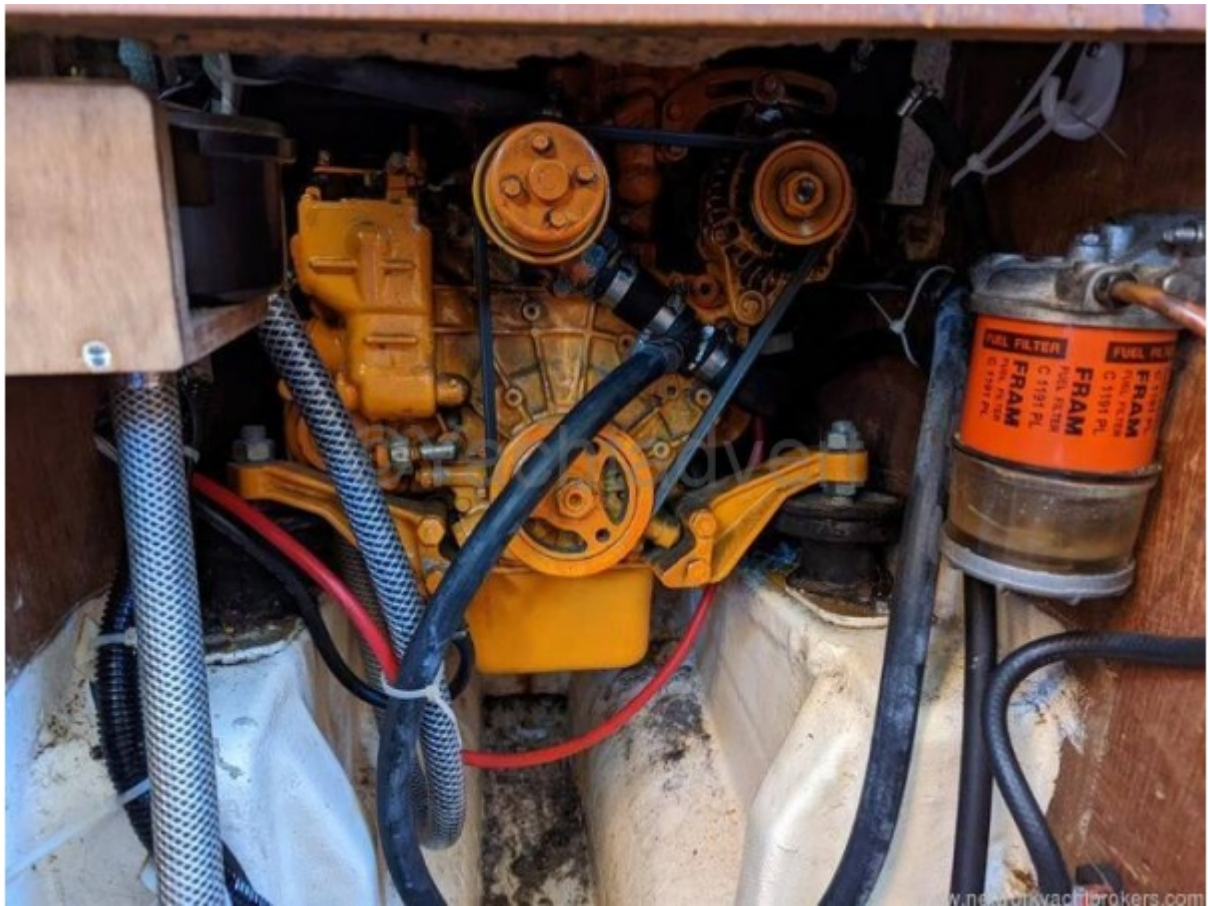
























www.networkyachtbrokers.com



www.networkyachtbrokers.com









