



40 - 1978

<https://www.yachtadvert.com/fr/749-atlantic-40.html>

46 221 â,- ttc



Général

Constructeur : Atlantic
Matériau : GRP Poly
Largeur : 3,35 m
Radeau : Non
Leasing en cours : Non

Sous type : Plaisance
Année : 1978
Longueur : 12,19 m
Tirant d'eau : 0,00 m
Région : Dover, Kent, Royaume-Uni

Moteurs

Carburant : Diesel
Puiss. Unit. (CV) : 80

Marque moteur : Mercedes OM314
Nombre : 1

Aménagements

Flybridge : Non

Timonerie : Non

électronique

Pilote auto : Non

GPS : Non

VHF : Non

Déssalinisateur : Non

Radar : Non

Sondeur : Non

Traceur de carte : Non

Convertisseur 12/220 : Non

équipement de pont

Hydraulique : Non

Plateforme AR : Non

Taud d'hivernage : Non

Capote de roof : Non

Cockpit en teck : Non

Grand voile sur enrouleur : Non

Passerelle : Non

Bossoirs : Non

Guindeau électrique : Non

Taud cockpit : Non

Pont teck : Non

Génois sur enrouleur : Non

Spinnaker : Non

équipements principaux

Propulseur Arrière : Non

Clim. : Non

Eaux noires : Non

Annexe : Non

Propulseur avant : Non

Groupe élec. : Non

Eau chaude : Non

Flaps : Non

Moteur annexe : Non

électroménager

Congélateur : Non
Micro-ondes : Non
Réchaud électrique : Non
Lave-linge : Non
Antenne TV : Non
TV SAT : Non

Glaçons : Non
Four : Non
Réchaud gaz : Non
Chauffage : Non
Lave-vaisselle : Non
TV : Non

Divers

Remarks :

Experience luxury sailing aboard "Astazou," a ketch rigged centre cockpit Atlantic 40 yacht featuring a sturdy long keel design. This vessel boasts recent upgrades exceeding over &#pound;30,000 within the last 24 months, including enhancements to fittings, rigging, electronics, and safety equipment. Revel in the elegance of its exquisite wood interior, providing ample space both above and below deck.</p><p>This yacht is reluctantly offered for sale due to the passing of one of its owners. A November 2021 survey report is available upon request, demonstrating its impeccable condition.&#nbsp; Don't miss the opportunity to seize this remarkable yacht. Schedule your viewing today and embark on a journey of unparalleled luxury and exploration.</p>

Accommodation :

This Atlantic 40 offers seven berths in three cabins. It has 6ft 1&#rdquo; of headroom throughout with plenty of space for seating and storage. Beautiful woodwork throughout the boat and gold coloured upholstery in the saloon give it a warm and luxurious feel. The portside L-shaped seating is situated around a lightwood, folding table. Opposite is the chart table with room for 2 to sit.&#nbsp;</p><p>The galley to starboard is equipped with a 2-burner Dometic gas cooker with an oven and grill. The galley also has a 12v fridge and a stainless-steel sink. This boat has a freshwater capacity of 318L, which is pressurised and heated by the engine and electric immersion heater. The galley also has a large work surface and plenty of storage.&#nbsp;</p><p>The forepeak has a large V-berth with patterned mattresses. This cabin provides great storage underneath the berth and to port and starboard.&#nbsp;</p><p>The aft has a double and single berth cabin, equipped with orange-coloured mattresses. This aft cabin has plenty of space for storage. The opening deck hatch allows for plenty of natural light. The windows have patterned curtains in all cabins.&#nbsp;</p><p>This boat is equipped with two heads one of which has a shower. The forward head is equipped with a compact, manual marine toilet, large basin with 2 x stainless-steel taps and stainless-steel shower. The heads have been styled in a marbled effect with a large mirror and wooden cabinets.&#nbsp;New water accumulator and pump fitted in 2022</p><p>The aft head is fitted with compact, manual marine toilet and basin. This head&#rsquo;s walls have been finished in a blue-tinted white colour and has storage under the basin and behind the toilet.</p>

Inventory :

Deck Equipment: Main anchor Anchor windlass &#ndash; electric Lifeline gates 6 x Fenders 4 x Mooring warps Mainsail cover Mizzen sail cover Cockpit cover PVC winter cockpit cover Navigation Equipment:

 Steering compass Depth &#ndash; Raymarine, new March 2022 Speed/log &#ndash; Raymarine, new March 2022 Windspeed/direction &#ndash; Raymarine, new March 2022 Fixed VHF &#ndash; Icom IC M330 Handheld VHF - Icom 94DE new 2022 GPS/Chart plotter &#ndash; Raymarine, new March 2022 AIS receiver Radar &#ndash; Stand alone Autopilot &#ndash; Raymarine Electronic charts Deck level nav lights Masthead light Clock and barometer Safety Equipment:

 2 x Fire extinguishers Fire blanket Deck lights Horseshoe lifebuoy Life raft &#ndash; 6 person Seago, manufactured March 2022 Emergency tiller Manual bilge pump 2 x Electric bilge pumps 1 x Manual bilge pump Keel:

Traditional bolt on long keel with wheel steering

History and Construction:

This Atlantic 40 "Astazou" was constructed in 1978 with a white GRP hull, teak decking and GRP superstructure. The rudder is skeg hung and has a bolt-on, traditional long keel. The boat was last ashore May 2022, antifouled in March 2022 and anodes changed in May 2022. All seacocks were changed March 2022. The boat has had 3 previous owners and was in the current owner's possession since November 2021.

Marine Insurance:
As one of the UK's largest Brokers with over 700 boats for sale, we are able to introduce you to Boat Insurance providers that offer all types of Boat Insurance including insurance for Yachts, Sailing Boats, Motor Cruisers, Narrowboats, Inland Waterway Craft, Barges, Houseboats, Speedboats, Rigid Inflatable Boats, Waterski Boats, Jet Skis, Personal Watercraft and Dinghies.
Just click on the following link to request an insurance quote for this boat or your current boat:
www.networkyachtbrokerskent.co.uk/marineinsurance/

Mechanical :

Sails and Spars
This Atlantic 40 has a ketch masthead rig. The mast and boom are an alloy construction and original to the boat. The main boom was new in 2022. The mast is deck stepped. The spinnaker pole is also of an alloy construction. The stainless-steel rigging was changed new in March 2022. The Running rigging has been changed as and when required. The mainsail is slab reefing with lazyjacks and the headsail is furling.

Winches

- 2 x Sheet winches – Harken 48, self-tailing
- 2 x Halyard winches – Gib sea
- 1 x Additional winch

Sails

- Main – Dacron, last valeted in 2022
- Mizzen – Dacron, last valeted in 2022
- Genoa – Dacron, last valeted in 2022
- Storm Jib – Dacron, new 2022
- Spinnaker - new 2022

Powered by a Mercedes OM314 diesel engine. This 80HP, 4-cylinder engine features indirect cooling and is shaft driven to a fixed 3-blade fixed propeller. Wheel steering with morse controls. A 4hp through hull bowthruuster has been fitted.
This Atlantic 40 is fitted with a 70L stainless-steel tank and reaches a cruising speed of 6kn and has a max speed of 8kn. The engine was last serviced in November 2021 and the shaft bearing was changed in March 2021.

Electrical systems:

Equipped with 3 x 12v batteries, 1 x domestic, 1 x engine start and 1 x for the bow thruster. Age of batteries is unknown; they are charged via the engine alternator and shore power battery charger. It has a battery management system fitted. This boat has a 240V shore power connection, ring mains, immersion heater and a battery charger.

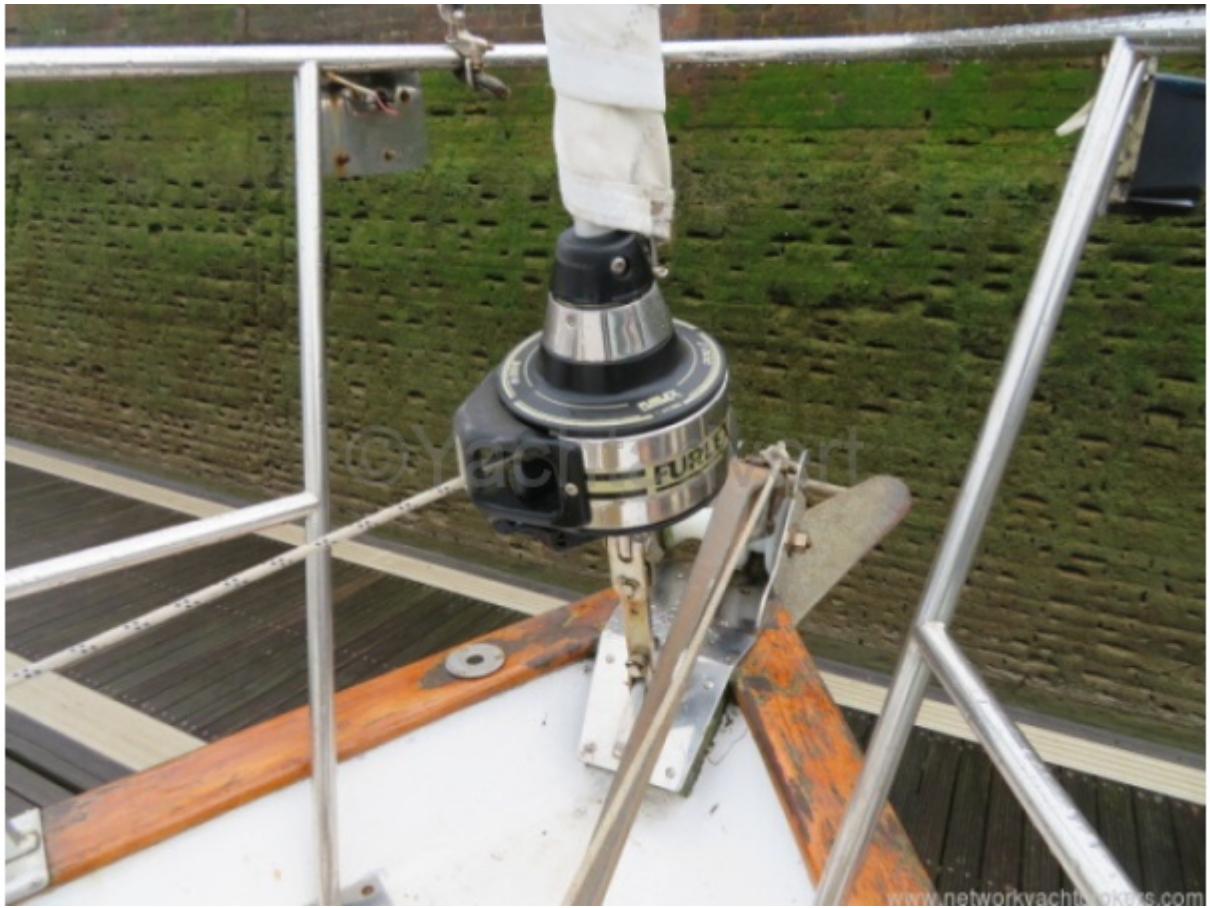
























www.networkyachtbrokers.com



www.networkyachtbrokers.com





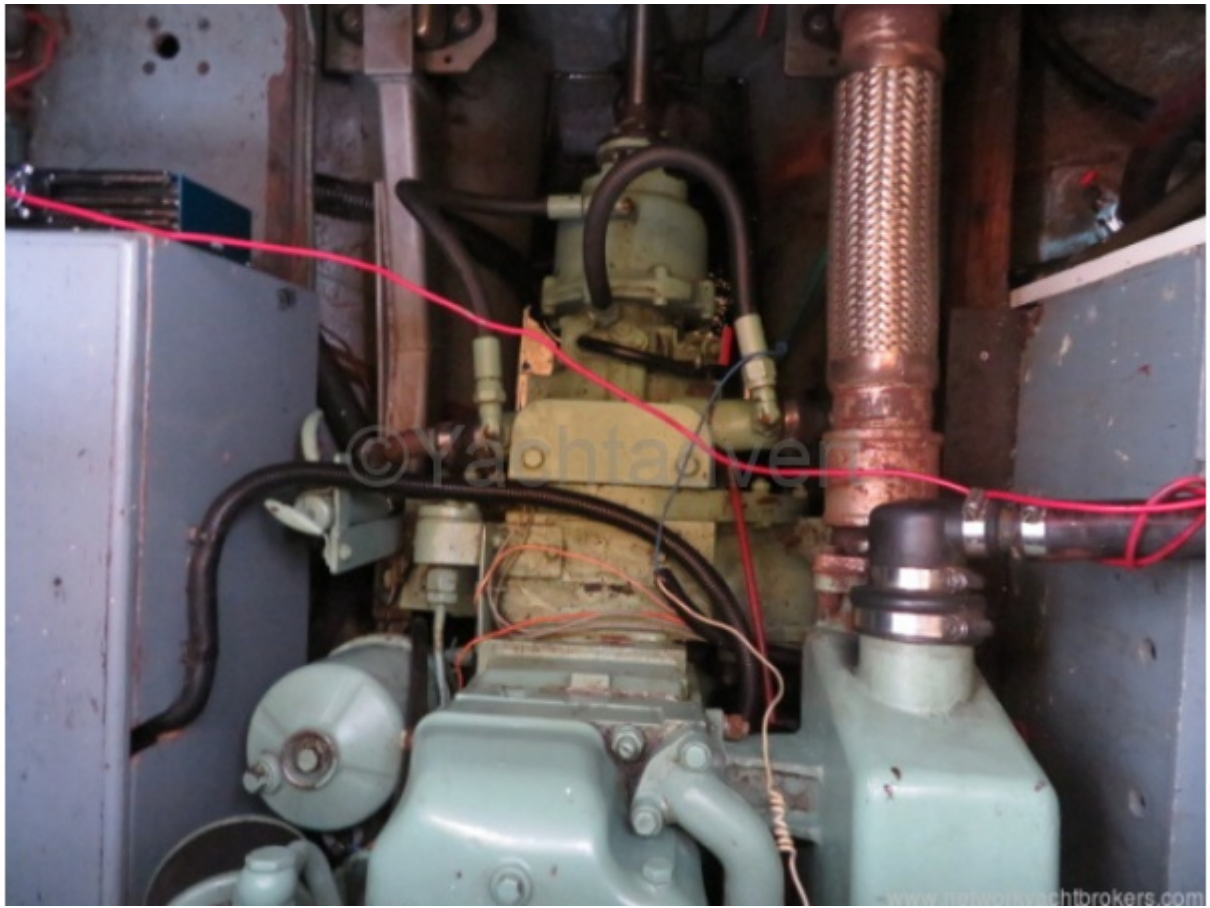






















www.networkvachtbrokers.com



www.networkvachtbrokers.com

