



Astrea 42 - 2019

<https://www.yachtadvert.com/fr/819-fontaine-pajot-astrea-42.html>

485 000 EUR ttc



Général

Année : 2019

Largeur : 7,32 m

Radeau : Non

Leasing en cours : Non

Constructeur : Fountaine Pajot

Longueur : 12,80 m

Tirant d'eau : 0,00 m

Région : Preveza, Grèce

Moteurs

Carburant : Diesel

Puiss. Unit. (CV) : 2

Marque moteur : Volvo Penta

Nombre : 2

Aménagements

Flybridge : Non

Timonerie : Non

électronique

Pilote auto : Non

GPS : Non

VHF : Non

Déssalinisateur : Non

Radar : Non

Sondeur : Non

Traceur de carte : Non

Convertisseur 12/220 : Non

équipement de pont

Hydraulique : Non

Plateforme AR : Non

Taud d'hivernage : Non

Capote de roof : Non

Cockpit en teck : Non

Grand voile sur enrouleur : Non

Passerelle : Non

Bossoirs : Non

Guindeau électrique : Non

Taud cockpit : Non

Pont teck : Non

Génois sur enrouleur : Non

Spinnaker : Non

équipements principaux

Propulseur Arrière : Non

Clim. : Non

Eaux noires : Non

Annexe : Non

Propulseur avant : Non

Groupe élec. : Non

Eau chaude : Non

Flaps : Non

Moteur annexe : Non

électroménager

Congélateur : Non
Micro-ondes : Non
Réchaud électrique : Non
Lave-linge : Non
Antenne TV : Non
TV SAT : Non

Glaçons : Non
Four : Non
Réchaud gaz : Non
Chauffage : Non
Lave-vaisselle : Non
TV : Non

Divers

Remarks :

NEW ARRIVAL- More details to follow

Fountaine Pajot Astrea 42 QUATUAR (4 Cabin and 4 bathroom) Comfort package.
The Fountaine Pajot Astrea 42 QUATUAR is a 2019 catamaran perfect for those who love sailing in style. With a sleek design and a cleverly spacious interior in its 12.58-meter frame, it's great for bringing people together on the water. Enjoy the sea with family and friends in comfort and luxury.

This catamaran features four elegant double cabins, each with its own bathroom, providing privacy for everyone. the QUATUAR version of the Astrea 42 boasts four double cabins and four ensuite bathrooms, offering ample space and privacy for all on board.
Key features include a rooftop double seat at the helm station adjacent to a sunbathing area, a large cockpit with a built-in griddle, and a footbridge that transforms into a delightful beach club. The 360° open lounge, bathed in natural light, adds to the vessel's inviting atmosphere, complemented by the refined aesthetics of the cabins and the sizable Italian-style bathrooms. , It's equipped with a unique rooftop seating near a sunbathing spot, a spacious cockpit for outdoor enjoyment, and a lounge area filled with natural light. Every detail of the Astrea 42 is crafted for an outstanding sailing experience.

HIGHLIGHTS:

- 4 Double Cabins & 4 Ensuite Bathrooms:** Ideal for family or group cruising, providing privacy and comfort.
- Comfort Package:** Enhanced amenities for a more luxurious experience.
- Generator & Hydraulic Gangway:** Ensures power availability and easy access to and from the yacht.
- "DockMate" Easy Docking System:** Simplifies mooring and docking operations.
- Air conditioning:** 28 K BTU
- Water Maker:** 180 Liters per hour
- Under water lighting**
- Electric Multi function table in Saloon**
- Spacious Interiors:** Despite the compact overall length of 12.58 meters.
- Rooftop Double Seat at Helm Station:** Close to a sunbathing area, perfect for enjoying sailing together.
- Large Cockpit:** Ideal for outdoor dining and relaxation.
- Electric Platform /Footbridge** as Beach Club: Enhances the enjoyment of the sea swimming and also used for dingy lift and store.
- 360° Open Lounge:** With large windows allowing ample sunlight.
- Italian-Style Bathrooms:** adding a touch of elegance.
- Overall Length:** 12.58 meters, offering a balance of size and agility.
- Fuel Capacity:** Approximately 470 liters, for extended cruising range.

Accommodation :

Accommodations

- Single Berths: 1
- Double Berths: 4
- Cabins: 4
- Heads: 4

Inventory :

Mechanical :

MECHANICAL

- 2019 Volvo Penta D2 50 F (Engines 2)
- Fuel Type: Diesel
- Drive Type: Sail Drive
- Power: 50 hp
- Propeller Type: 3 Blade
- Propeller Material: Alloy

Dimensions

- LOA: 12 m 58 cm
- Beam: 7 m 20 cm
- Max Draft: 1 m 25

cm

- Seating
- Liferaft Capacity: 10

Accommodations

- Single Berths: 1
- Double Berths: 4
- Cabins: 4
- Heads: 4

Covers

Bimini Top: Hard top

Spray Hood

Lazy Bag

Cockpit Cover: Full Cockpit tent enclosure

Lazyjacks

Electrical

Equipment

	Shore	Power
Inlet		
Generator		
Inverter		

Electronics

- Depthsounder:
- Radar:
- Log-Speedometer:
- Wind Speed and Direction:
- Repeater(s):
- Navigation Center:
- Plotter: 3 x Garmin Smart Cruising 8410 GMI20
- Autopilot:
- Compass:
- GPS:
- Cockpit Speakers:
- VHF: Also 2nd Garmin at Helm station

Inside Equipment

- Electric Bilge Pump:
- Oven:
- Manual Bilge Pump:
- Air Conditioning:
- Electric Head: (4)
- Hot Water:
- Refrigerator:
- Fresh Water Maker:
- Sea Water Pump:
- Battery Charger:

Outside Equipment/Extras

- Teak Cockpit: Synthetic
- Cockpit Shower:
- Outboard Engine Brackets:
- Gangway: Electric Platform
- Davit(s):
- Hydraulic Gangway:
- Liferaft:
- Cockpit Cushions:
- Cockpit Table:
- Swimming Ladder:
- Rigging:
- Steering Wheel:
- Electric Winch:

Sails

Fully Battened Mainsail

Furling Mainsail

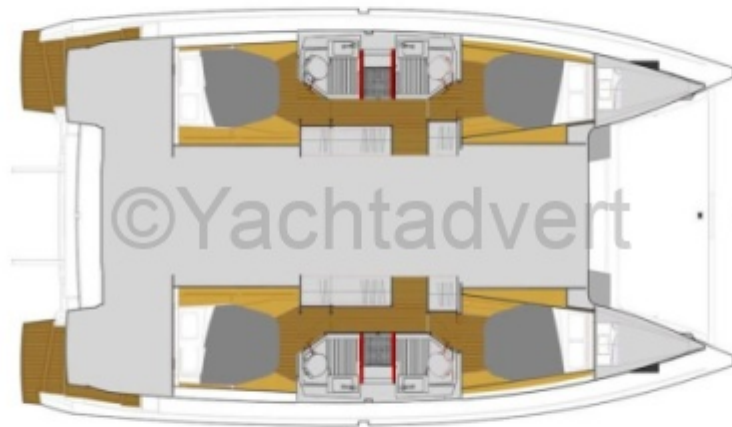
Gennaker/Cruising Spinnaker

Genoa

Furling Genoa







Sister ship





NETWORK
YACHT BROKERS



NETWORK
YACHT BROKERS

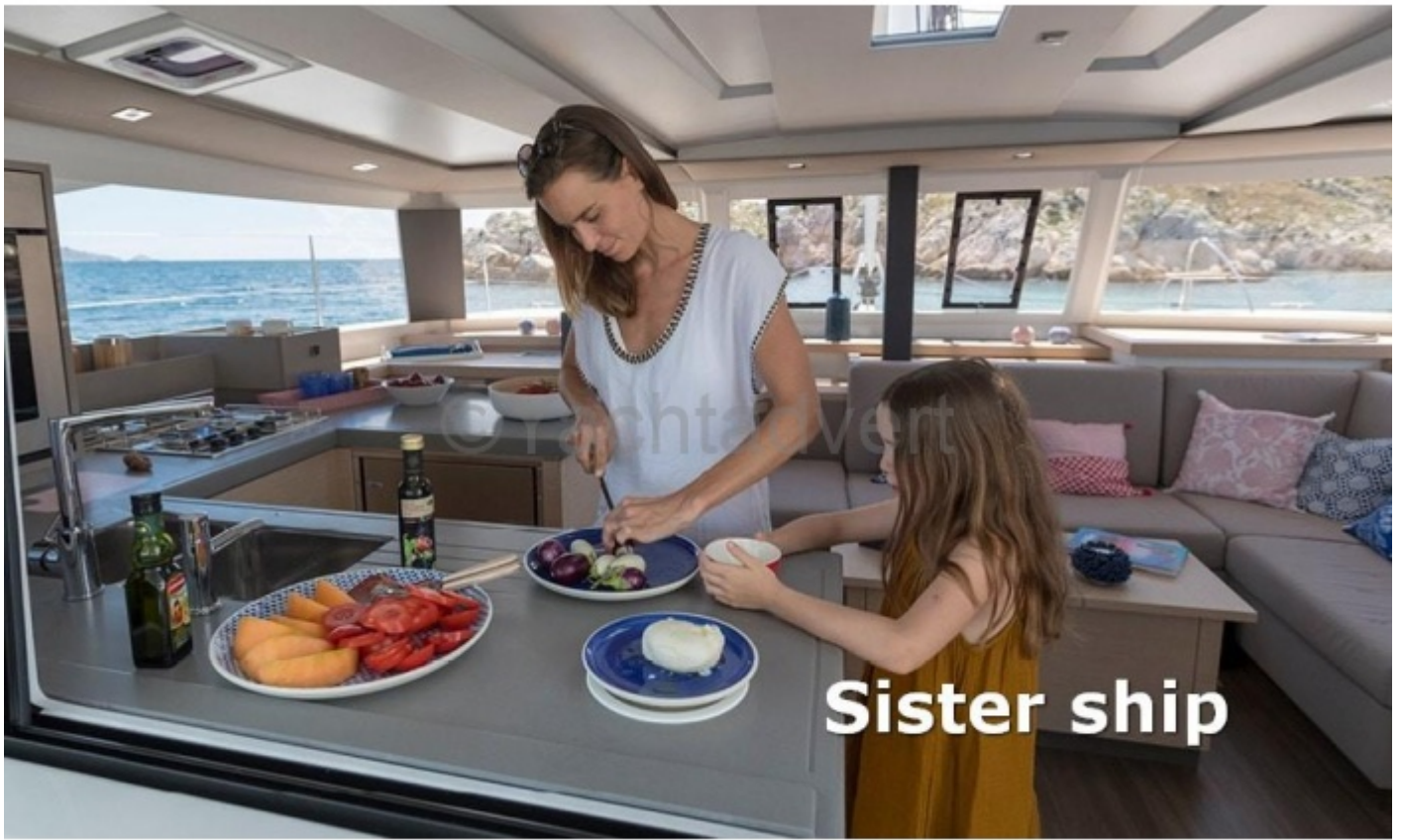












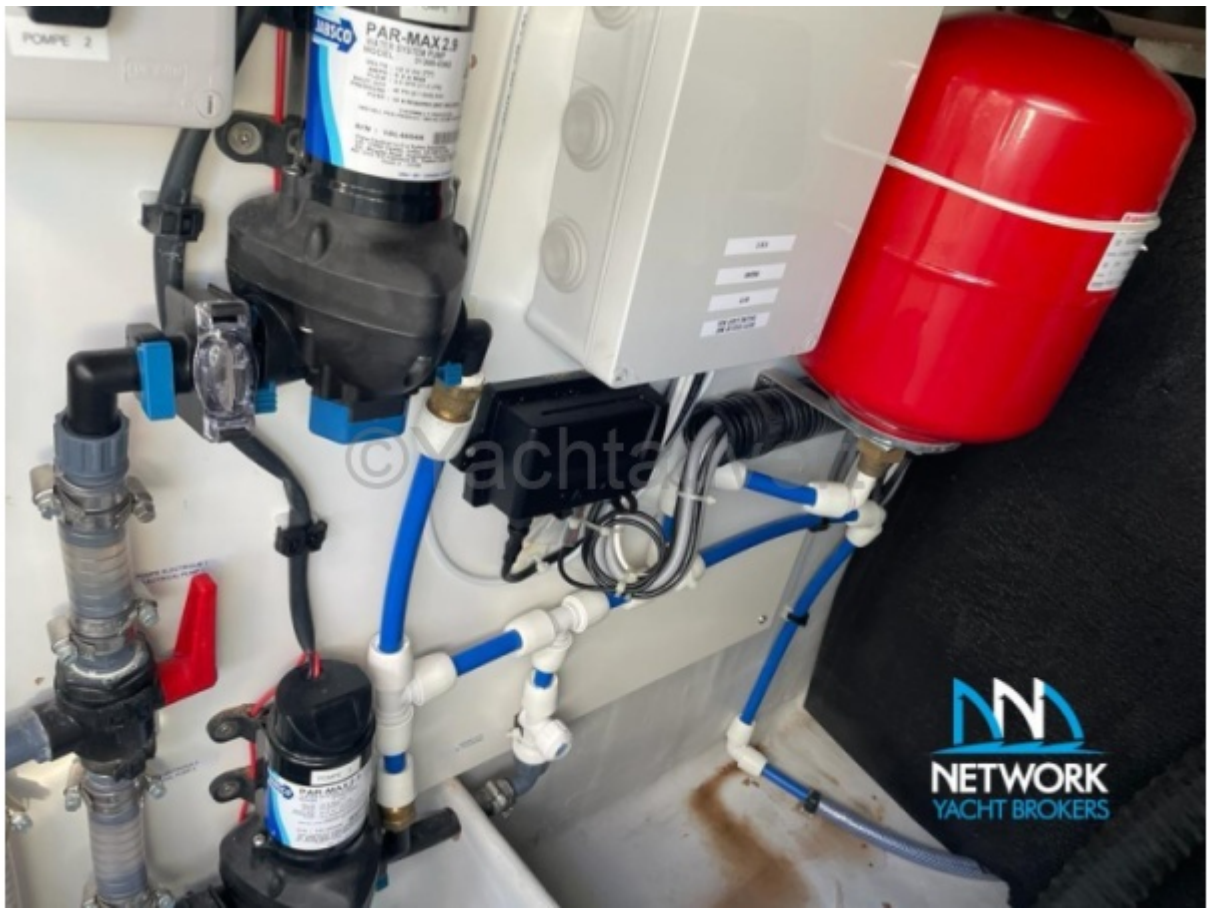
Sister ship













Sister ship

































