



## 2565 Window Express - 2010

<https://www.yachtadvert.com/fr/863-regal-2565-window-express.html>

45 947 â,- ttc



### Général

Année : 2010

Longueur : 8,53 m

Radeau : Non

Leasing en cours : Non

Constructeur : Regal

Matériau : GRP Poly

Largeur : 2,74 m

Région : Poole, Royaume-Uni

### Moteurs

Nombre : 1

Marque moteur : Mercruiser

Puiss. Unit. (CV) : 260

# Aménagements

Flybridge : Non

Timonerie : Non

---

## électronique

Pilote auto : Non

GPS : Non

VHF : Non

Déssalinisateur : Non

Radar : Non

Sondeur : Non

Traceur de carte : Non

Convertisseur 12/220 : Non

---

## équipement de pont

Hydraulique : Non

Plateforme AR : Non

Taud d'hivernage : Non

Capote de roof : Non

Cockpit en teck : Non

Grand voile sur enrouleur : Non

Passerelle : Non

Bossoirs : Non

Guindeau électrique : Non

Taud cockpit : Non

Pont teck : Non

Génois sur enrouleur : Non

Spinnaker : Non

---

## équipements principaux

Propulseur Arrière : Non

Clim. : Non

Eaux noires : Non

Annexe : Non

Propulseur avant : Non

Groupe élec. : Non

Eau chaude : Non

Flaps : Non

Moteur annexe : Non

---

# électroménager

Congélateur : Non  
Micro-ondes : Non  
Réchaud électrique : Non  
Lave-linge : Non  
Antenne TV : Non  
TV SAT : Non

Glaçons : Non  
Four : Non  
Réchaud gaz : Non  
Chauffage : Non  
Lave-vaisselle : Non  
TV : Non

---

## Divers

**Remarks :**

2010 Regal 2565 Window express fitted with the Mercruiser 5.0MPI petrol engine with Bravo 3 outdrive with circa 640 hours. "RaRa" is a good example of these popular 4 berth family cruisers. She has been well looked after and maintained by her current owner having been fully serviced (engine & outdrive) in January 2025, she has also just had a new bow thruster fitted along with a new electric windlass.&nbsp; New interior carpet has been added along with SeaDeck soft decking to the cockpit and bathing platform. She has a full cockpit enclosure, GPD chart plotter, VHF, hot and cold water, tonneau cover etc etc.

**Accommodation :**

**Accommodation**

- 4 berth in 2 cabins
- Convertible dinette to double berth
- Double mid cabin&nbsp;
- New carpets
- HEADS:**
- New toilet
- Shower
- Sink
- Hot and cold water
- GALLEY:**
- Microwave
- Sink
- Hob
- Refrigerator&nbsp;

**Inventory :**

**Deck Equipment**

- Electric windlass with anchor and chain
- Clean hull as not antifouled, dry stack stored
- Warps and fenders

**Manufacturer Provided Description**

There are more cubic feet of livable interior space in this 25 Express than in Express Cruisers two feet longer. It's lighter, brighter and airier than any conventional trailerable cruiser. The large, windowed main cabin offers a comfortable dining area that converts to an oversized berth. There's a full standup head compartment, and the galley is complete with stove, sink with pressurized water, refrigerator, microwave and Corian countertop. The mid-cabin comfortably accommodates children or adults in the large berth. All this in a 25-foot trailerable cruiser that offers the highest level of standard equipment, equipment you would pay for as options on similar cruisers. The stand-up head compartment contains an integrated sink with hot and cold pressurized water, generous storage and a standard VacuFlush head.

**Disclaimer**

The Company offers the details of this vessel in good faith but cannot guarantee or warrant the accuracy of this information nor warrant the condition of the vessel. A buyer should instruct his agents, or his surveyors, to investigate such details as the buyer desires validated. This vessel is offered subject to prior sale, price change, or withdrawal without notice.&nbsp;

**customContactInformation**

+44(0)1202 669554

poole@yachts.co

**Mechanical :**

- Single Mercruiser 5.0 MPI 260hp
- Bravo 3 outdrive
- Engine and outdrive serviced 2025
- Stainless steel Duo prop
- 640 engine hours
- Shore power
- New 12v batteries&nbsp;







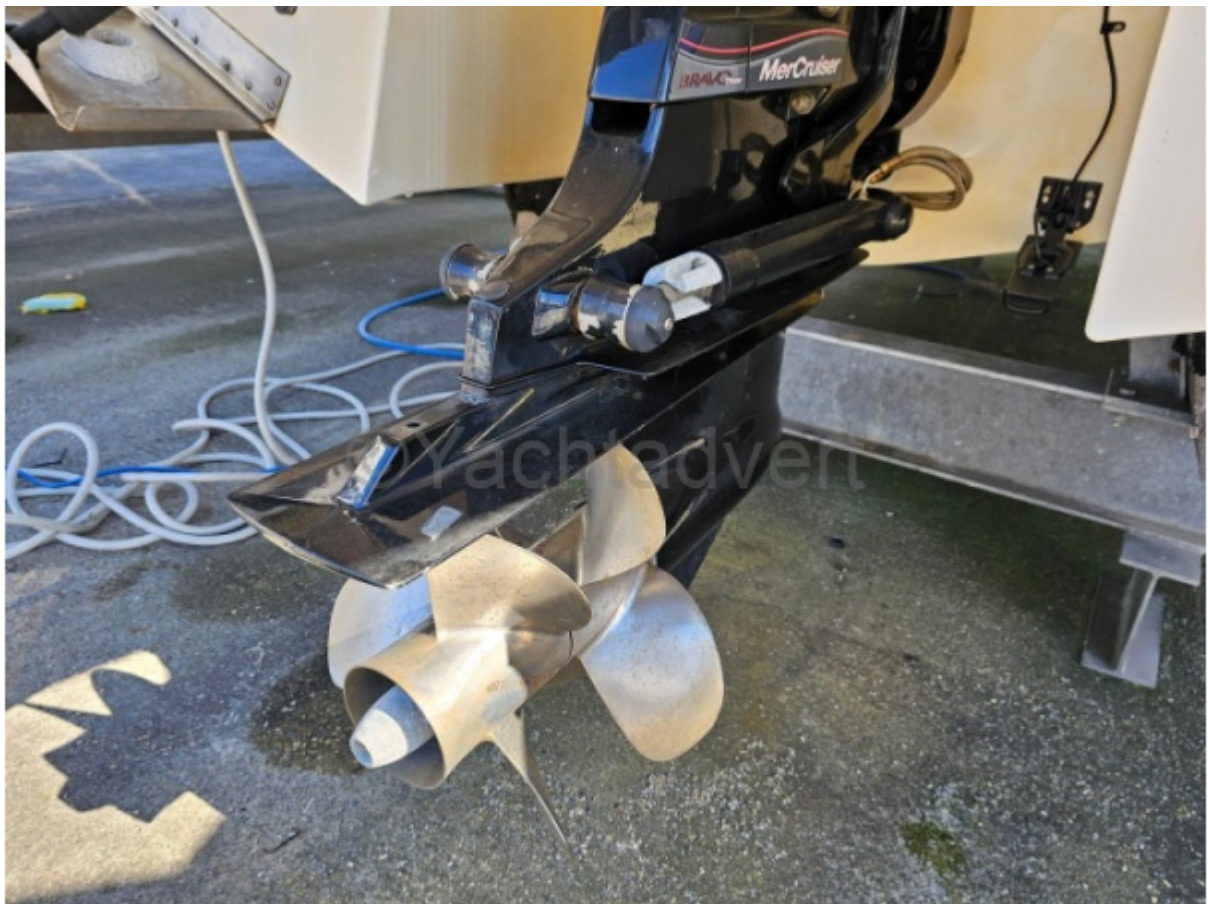
























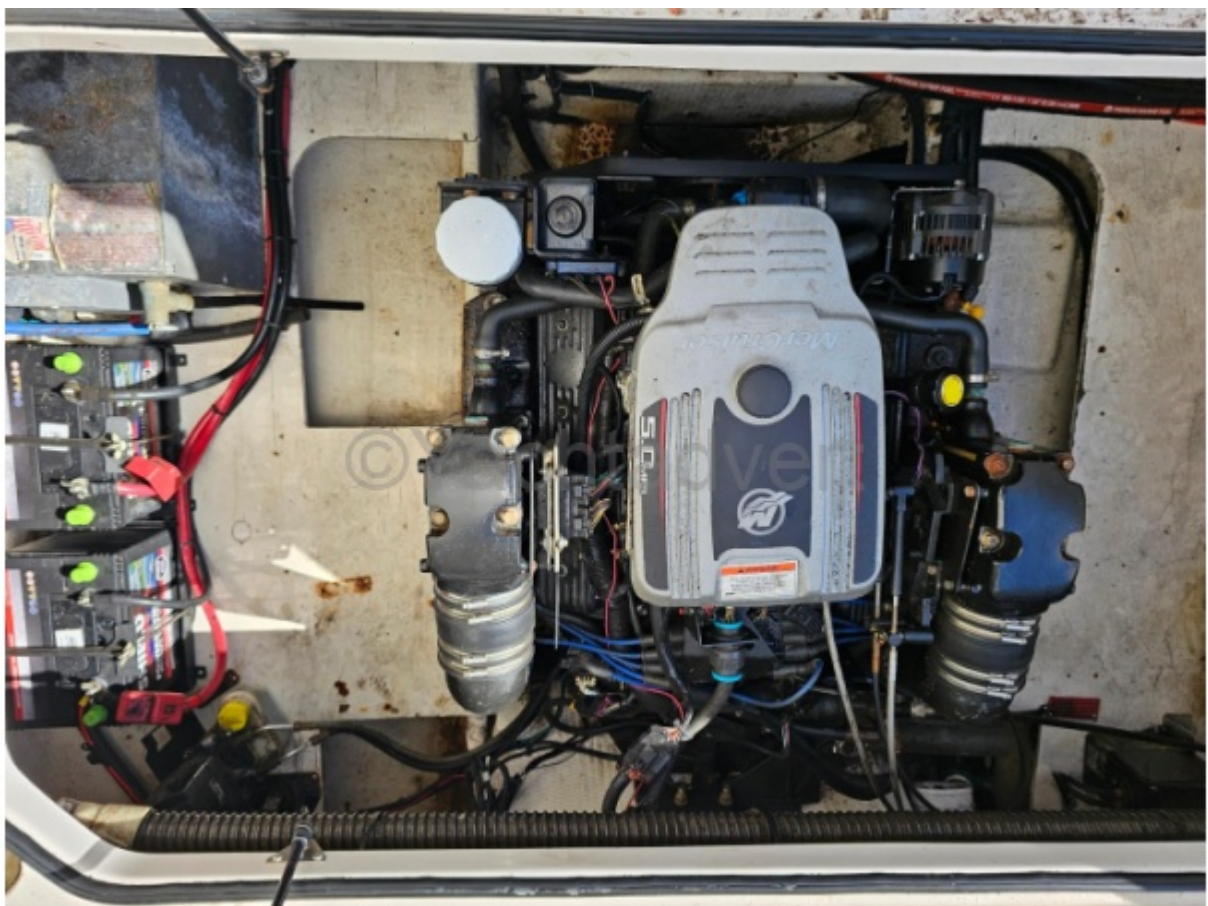






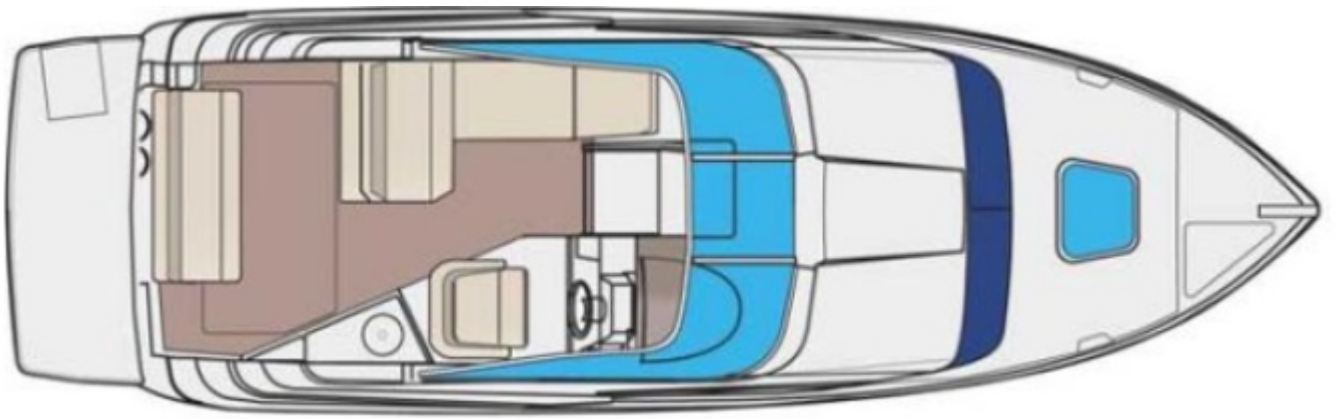












©Yachtadvert





