



## Van de Stadt 34 - 1987

<https://www.yachtadvert.com/fr/889-van-de-stadt-34.html>

39 000 EUR ttc



### Général

Matériau : GRP Poly

Largeur : 3,05 m

Radeau : Non

Leasing en cours : Non

Année : 1987

Longueur : 10,36 m

Tirant d'eau : 0,00 m

Région : Dun Laoghaire, Irlande

### Moteurs

Carburant : Diesel

Puiss. Unit. (CV) : 23

Marque moteur : Beta 3 cylinder

Nombre : 1

# Aménagements

Flybridge : Non

Timonerie : Non

---

## électronique

Pilote auto : Non

GPS : Non

VHF : Non

Déssalinisateur : Non

Radar : Non

Sondeur : Non

Traceur de carte : Non

Convertisseur 12/220 : Non

---

## équipement de pont

Hydraulique : Non

Plateforme AR : Non

Taud d'hivernage : Non

Capote de roof : Non

Cockpit en teck : Non

Grand voile sur enrouleur : Non

Passerelle : Non

Bossoirs : Non

Guindeau électrique : Non

Taud cockpit : Non

Pont teck : Non

Génois sur enrouleur : Non

Spinnaker : Non

---

## équipements principaux

Propulseur Arrière : Non

Clim. : Non

Eaux noires : Non

Annexe : Non

Propulseur avant : Non

Groupe élec. : Non

Eau chaude : Non

Flaps : Non

Moteur annexe : Non

---

# électroménager

Congélateur : Non  
Micro-ondes : Non  
Réchaud électrique : Non  
Lave-linge : Non  
Antenne TV : Non  
TV SAT : Non

Glaçons : Non  
Four : Non  
Réchaud gaz : Non  
Chauffage : Non  
Lave-vaisselle : Non  
TV : Non

---

## Divers

**Remarks :**

A proper sea going yacht of exceptional quality and fully equipped for any blue water adventure. Lead encapsulated keel and epoxy coated hull. Hull moulded with vertical top hat stiffeners every 0.6m along the hull. Five transverse plywood bulkheads bonded to the hull. Deck and coachroof a single moulding with Burmah teak on deck and timber exterior to coachroof with West epoxy for low maintenance. Built by Alan Rountree HND Mech & Struct Engineer. This yacht has the appearance of a timber constructed vessel. Quality interior finish resembling a timber yacht. Loaded with cruising equipment and spares. The ultimate self sufficient yacht. September yacht now ashore for the winter in its boathouse in Co Wicklow. Viewing by appointment.

**Accommodation :**

Most pleasing timber internal quality joinery and cabinet making.

Drawers have dove tail joints.

Fore cabin with two berths and overhead escape hatch.

Heads with shower forward of bulkhead.

Storage lockers opposite.

Fore cabin and main cabin close off with paneled doors.

Saloon has the most beautiful oval walnut table with drop leaf and height adjustable.

2 X settee berths with pea green leather upholstery.

Many drawers and cupboards with inlay and holding hasps in brass

Two hand turned timber upright grab poles.

All drawers with key locks to prevent slide out at sea.

Book shelves both sides.

Leaded window bar cabinet.

Galley with two burner cooker & grill.

Stainless steel sink.

Delph and cutlery cupboard above galley

Large pull out bread drawer under sink.

Chest fridge with Webasto Isotherm auto start up low consumption. Charge to -18c & holds -6c

Pull out oil skin hanging rail aft of galley.

Cabin sole of chestnut & ash.

Chart table to starboard side with two chart drawers.

Instruments at Chart table and electric panel has a drop down perspex

Companionway doors have ventilation holes with sliding perspex panels.

**Inventory :**

Tools for everything - a self sufficient inventory.

2 X drills 12v & 9V

Hummingbird depth.

Radio.

Raymarine VHF new.

Garmin 120 plotter.

JRC Radar 1000

Spare GPS

Spare log.

AIS radar.

Matstutec AIS transponder & receiver.

AIS radar receiver.

Brass barometer & clock.

Zeiss sextant.

Paper charts for Europe.

Battery monitor.

**Mechanical :**

Cutter rig

2 X Nemo furlers.

Slab reef on main to cockpit.

Nearly new sails.

Standing rig 6 years old.

Staysail 10 oz

2 X 40 Lewmar 2 Speed winches

2 X Amel 30 winches.

1 Lewmar 16.

Aeries self steering

2 X tiller pilots.

New 2024 Beta 3 cylinder diesel

Shaft drive to three blade bronze fixed propeller.

Electric Pro windlass with foot controls.

Whitlock steering and tiller.

Aft stand with angled solar panels, radar, VHF, Navtex, AIS & AIS transponders.

Custom trailer.

























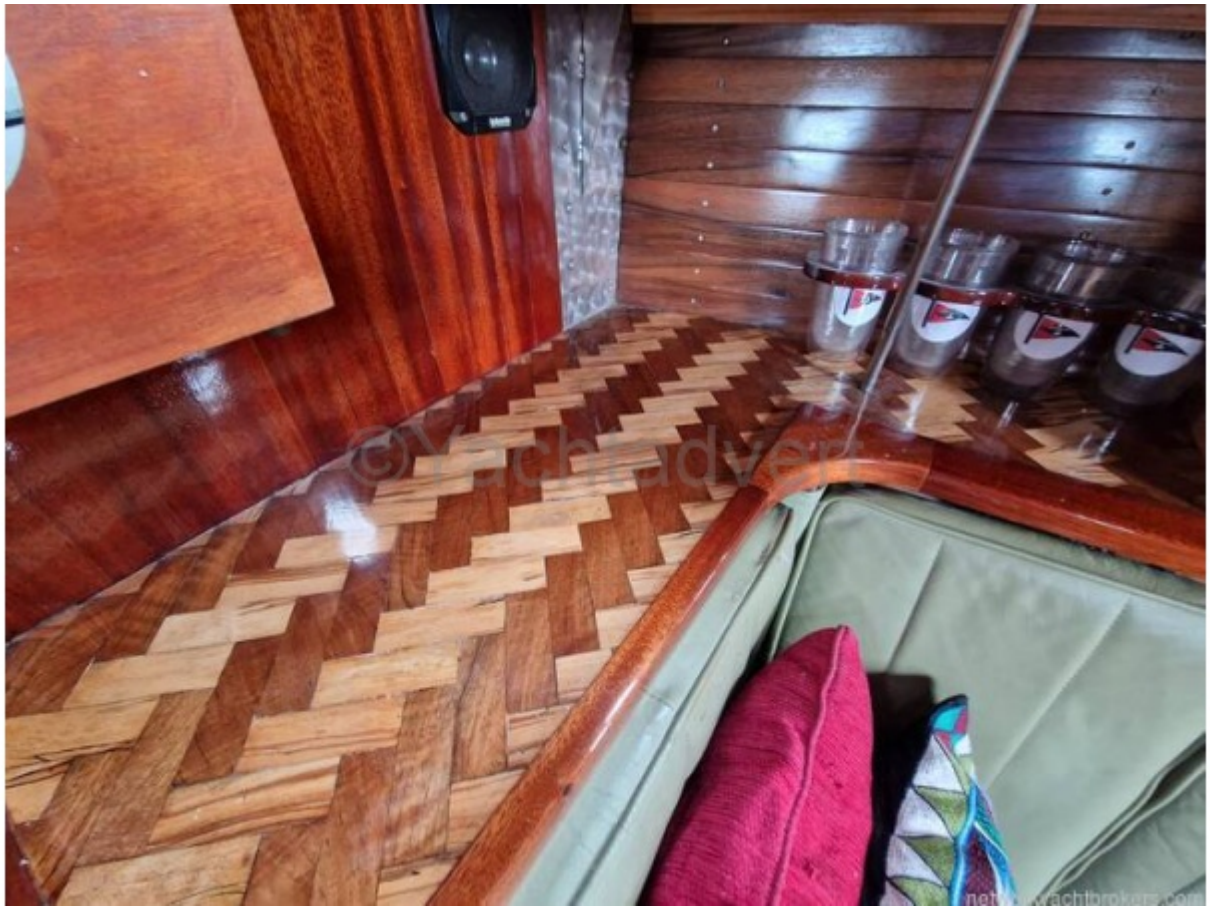






























networkyachtbrokers.com



networkyachtbrokers.com













