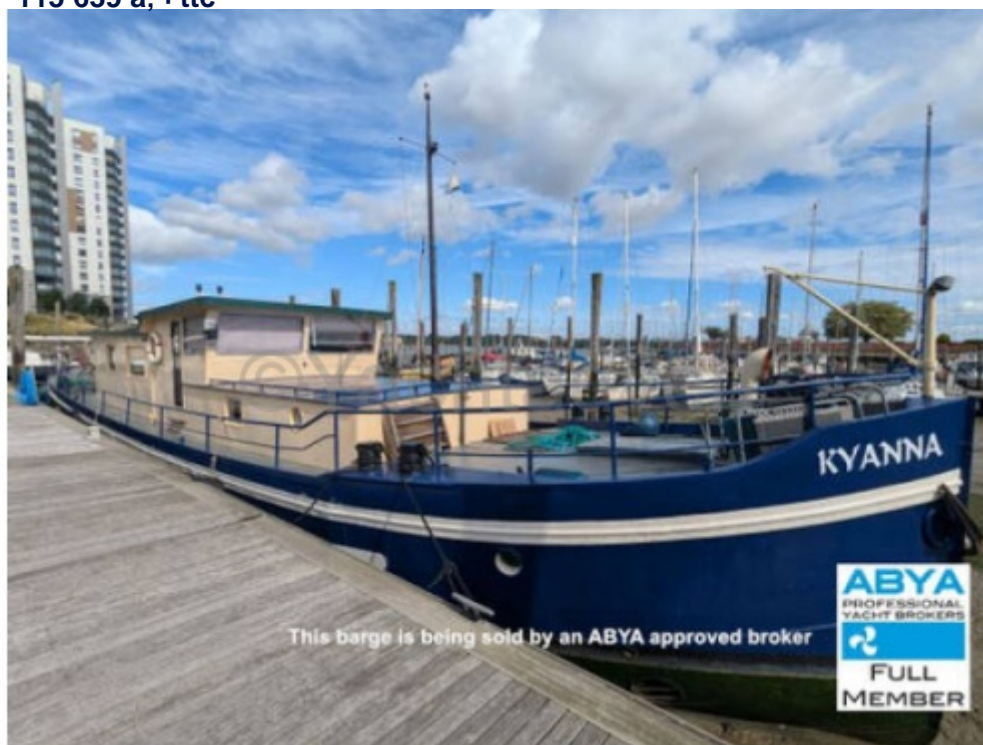




## Barge - 1919

<https://www.yachtadvert.com/fr/953-barge-barge.html>

115 639 â,- ttc



### Général

Constructeur : Barge  
Longueur : 25,60 m  
Radeau : Non  
Leasing en cours : Non

Sous type : Plaisance  
Année : 1919  
Largeur : 5,49 m  
Région : Gillingham, Royaume-Uni

### Moteurs

Carburant : Diesel  
Puiss. Unit. (CV) : 110

Marque moteur : DAF 1160  
Nombre : 1

# Aménagements

Flybridge : Non

Timonerie : Non

---

## électronique

Pilote auto : Non

GPS : Non

VHF : Non

Déssalinisateur : Non

Radar : Non

Sondeur : Non

Traceur de carte : Non

Convertisseur 12/220 : Non

---

## équipement de pont

Hydraulique : Non

Plateforme AR : Non

Taud d'hivernage : Non

Capote de roof : Non

Cockpit en teck : Non

Grand voile sur enrouleur : Non

Passerelle : Non

Bossoirs : Non

Guindeau électrique : Non

Taud cockpit : Non

Pont teck : Non

Génois sur enrouleur : Non

Spinnaker : Non

---

## équipements principaux

Propulseur Arrière : Non

Clim. : Non

Eaux noires : Non

Annexe : Non

Propulseur avant : Non

Groupe élec. : Non

Eau chaude : Non

Flaps : Non

Moteur annexe : Non

---



crane

- 6 x Mooring warps.
- 4 x Fenders

**Navigation Equipment:**

- VHF Radio
- Handheld VHF
- Navigation lights &ndash; Deck level
- Anchor light &ndash; Mast Level
- Clock and barometer

**Safety Equipment:**

- 6 x Fire Extinguishers
- Fire Blanket
- Gas Alarm
- Smoke Alarm

**Keel/Hull:**

- Cast iron Keel

**History & Construction:**

Constructed in 1919, Kyanna is a steel construction with a blue hull and cream superstructure. Kyanna has recently undergone complete shotblasting and re-paint in February 2024 with some mild steel work carried out while she was in dry dock. A copy of the 2024 Survey is available upon request.

The vessel has been lovingly maintained by the current owner for the last 7 years and was bought down to Gillingham by the owner after enjoying the River Thames. The owner is looking to emigrate at the end of this year and unfortunately cannot take the boat with him.

**Marine Insurance:**

As one of the UK's largest Brokers with over 700 boats for sale we are able to introduce you to Boat Insurance providers that offer all types of Boat Insurance including insurance for Yachts, Sailing Boats, Motor Cruisers, Narrowboats, Inland Waterway Craft, Barges, Houseboats, Speedboats, Rigid Inflatable Boats, Waterski Boats, Jet Skis, Personal Watercraft and Dinghies.

Just click on the following link to request an insurance quote for this boat or your current boat:  
[www.networkyachtbrokerskent.co.uk/marineinsurance/](http://www.networkyachtbrokerskent.co.uk/marineinsurance/)

**Mechanical :**

**Mechanical Systems:**

This classic barge is powered by a robust 110hp DAF 1160 diesel engine, which drives a shaft-connected to a three-bladed propeller. Fuel is supplied by two large 1,000-litre steel tanks.

The vessel is also equipped with a diesel generator and a diesel Lister engine that serves as either a water pump or an emergency battery charger, both of which draw from the main diesel tanks. Additionally, a Vetus M3 bow thruster with its own independent fuel tank is installed. The engine is controlled by a single-lever Morse control, with a separate Morse control for the bow thruster.

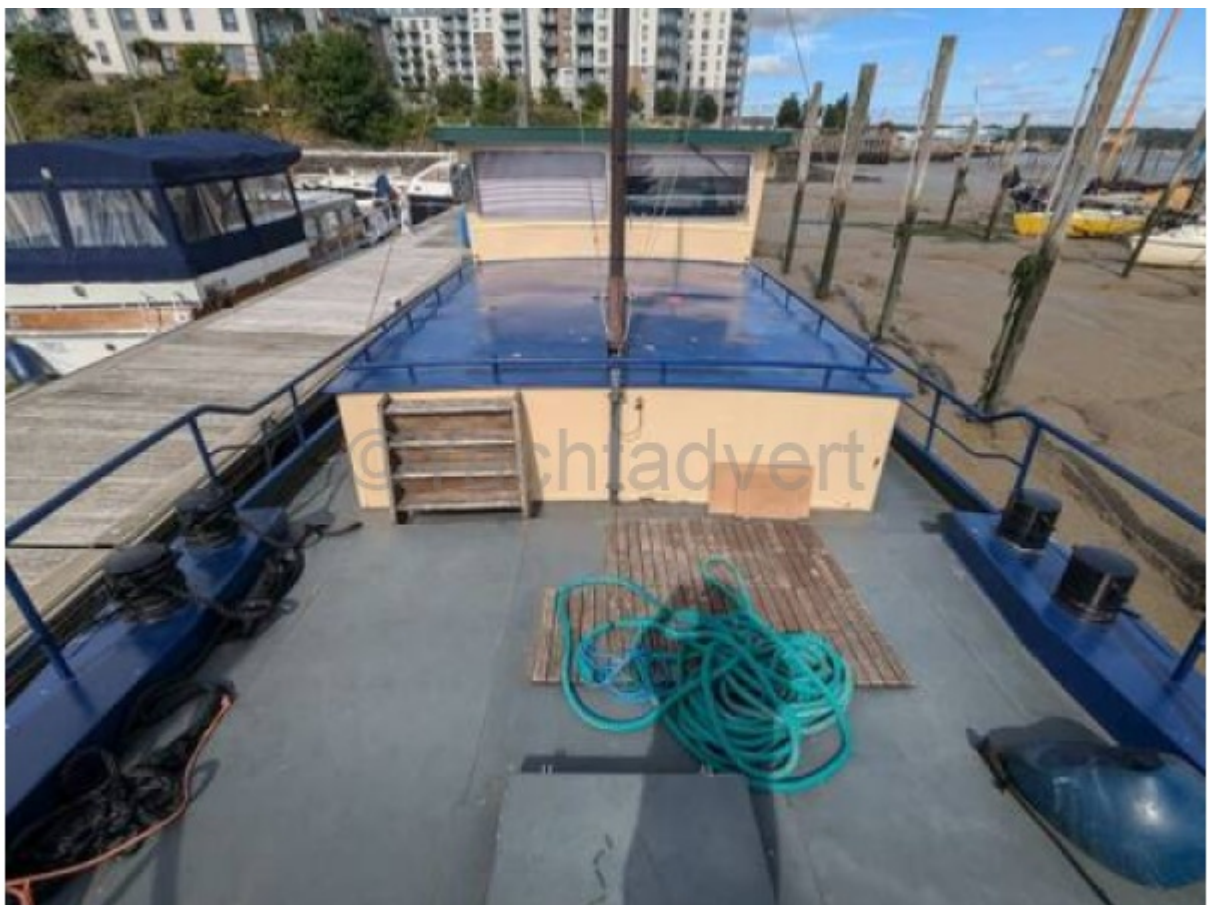
The main DAF 1160 engine was last serviced in February 2024, the current engine hours are unknown. This vessel has a cruising speed of approximately 8 knots and maximum speed of approximately 10 knots.

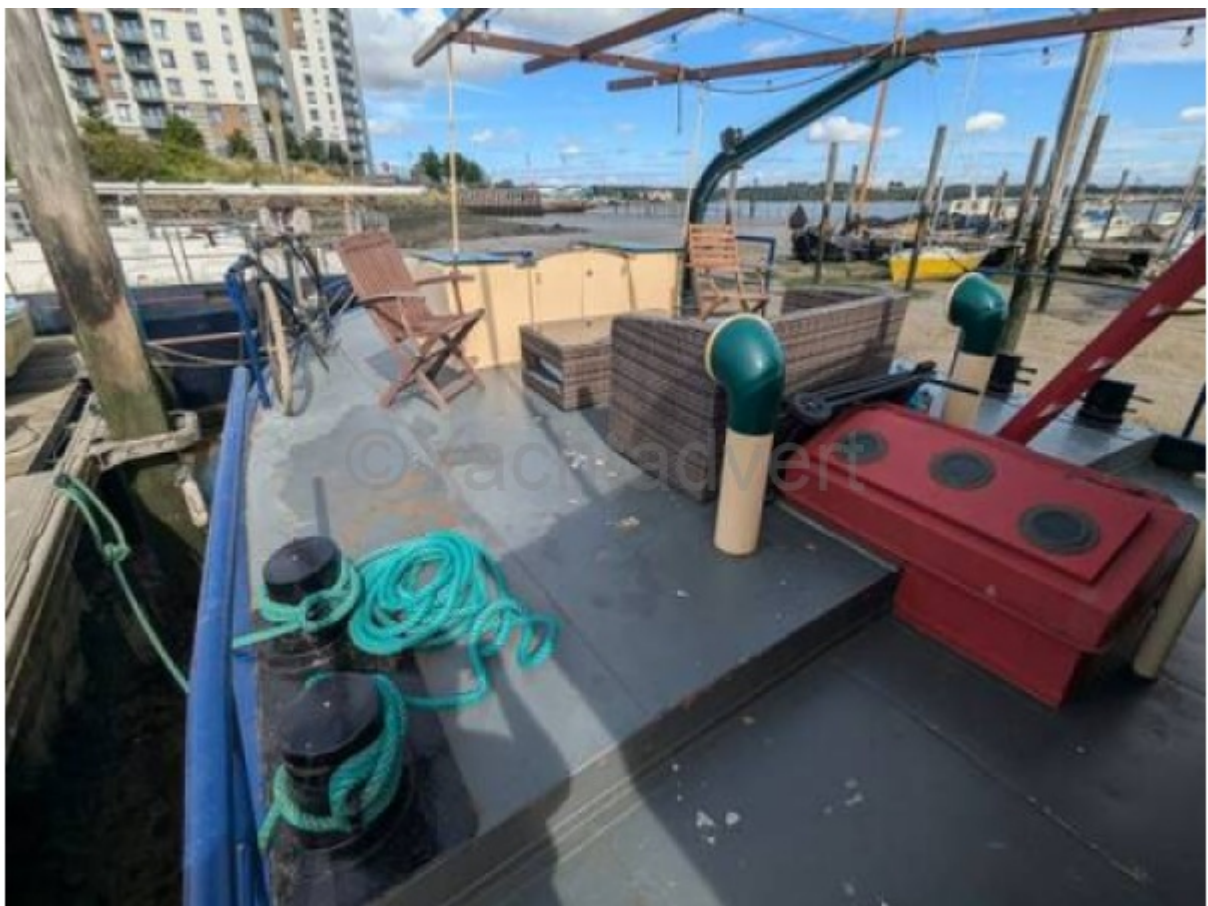
**Electrical Systems:**

The vessel is equipped with 15 batteries (1 x 12 - Volt engine battery, 12 x 6 - Volt domestic batteries, 1 x 12 - Volt bow thruster battery, and 1 x 12 - Volt generator battery), all of which were replaced in 2022.

These batteries are charged via the engine alternator, solar panel, and a battery charger when connected to either the 240V mains.

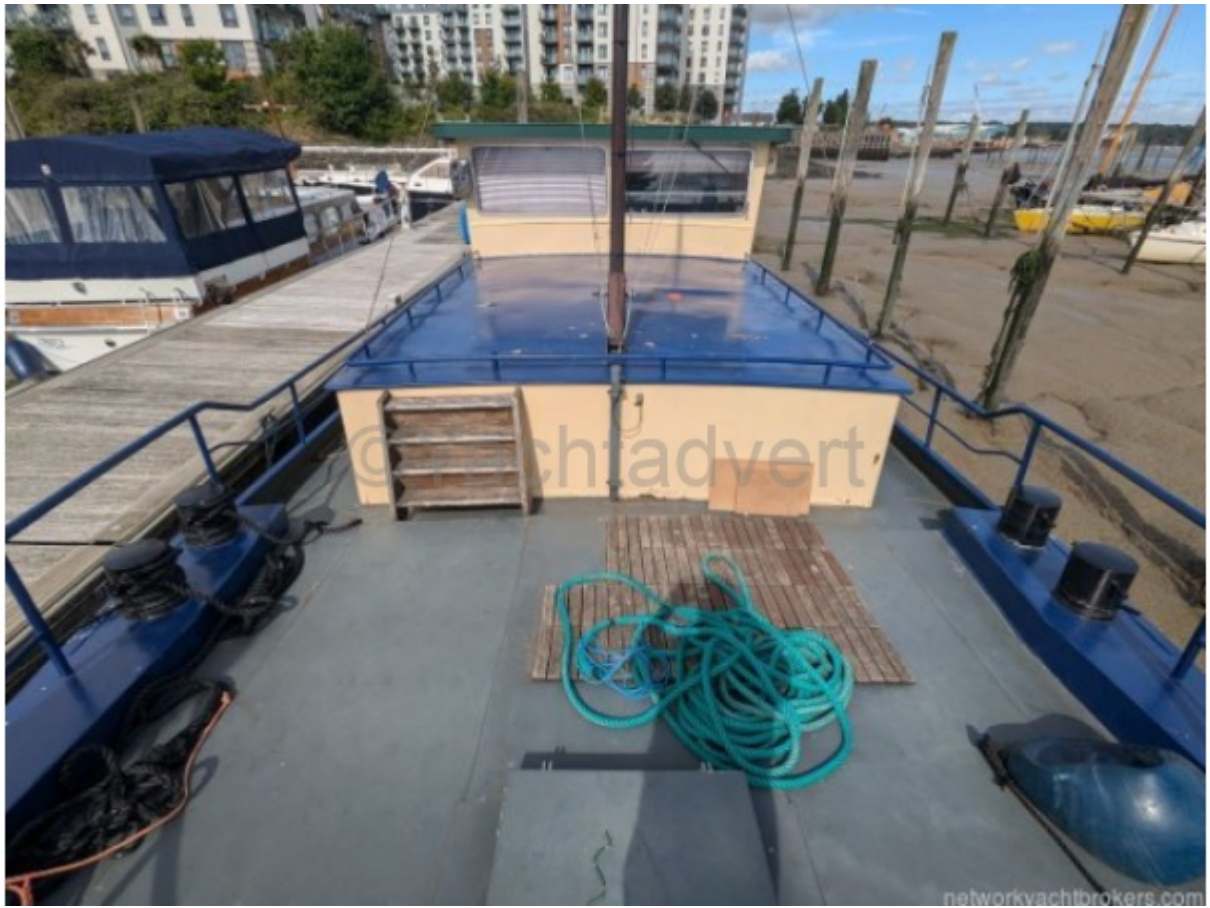
Additionally, the vessel has a 240-volt ring main and a 1600w inverter. A Victron battery management system has been installed to ensure optimal performance and efficiency of the onboard electrical setup.



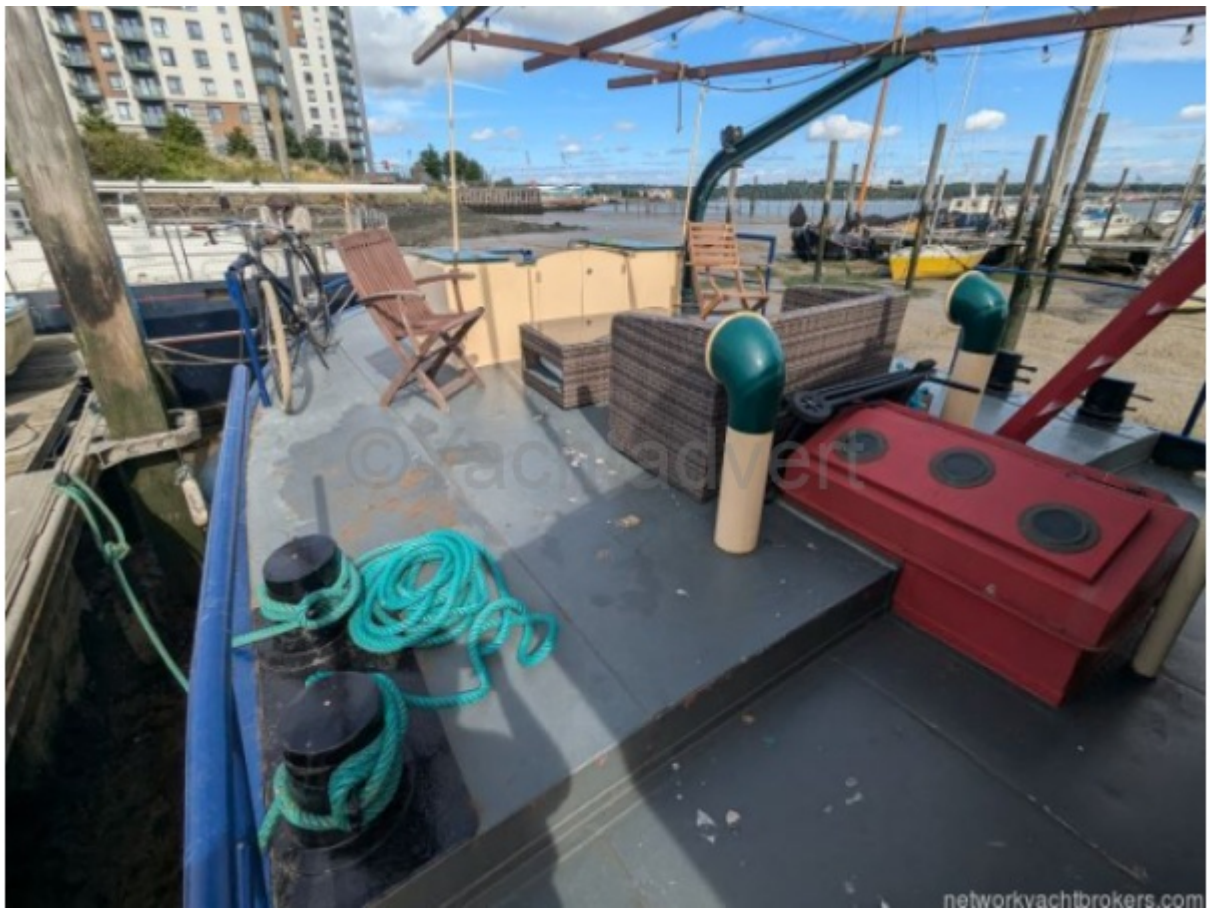












networkyachtbrokers.com



networkyachtbrokers.com









networkyachtbrokers.com



networkyachtbrokers.com









