



T7 - 2021

<https://www.yachtadvert.com/fr/961-finnmaster-t7.html>

64 200 â,- ttc



Général

Constructeur : Finnmaster

Matériau : GRP Poly

Largeur : 2,44 m

Région : Largs, Royaume-Uni

Sous type : Plaisance

Année : 2021

Longueur : 7,01 m

Radeau : Non

Leasing en cours : Non

Moteurs

Nombre : 1

Marque moteur : Yamaha V6

Puiss. Unit. (CV) : 250

Aménagements

Flybridge : Non

Timonerie : Non

électronique

Pilote auto : Non

GPS : Non

VHF : Non

Déssalinisateur : Non

Radar : Non

Sondeur : Non

Traceur de carte : Non

Convertisseur 12/220 : Non

équipement de pont

Hydraulique : Non

Plateforme AR : Non

Taud d'hivernage : Non

Capote de roof : Non

Cockpit en teck : Non

Grand voile sur enrouleur : Non

Passerelle : Non

Bossoirs : Non

Guindeau électrique : Non

Taud cockpit : Non

Pont teck : Non

Génois sur enrouleur : Non

Spinnaker : Non

équipements principaux

Propulseur Arrière : Non

Clim. : Non

Eaux noires : Non

Annexe : Non

Propulseur avant : Non

Groupe élec. : Non

Eau chaude : Non

Flaps : Non

Moteur annexe : Non

électroménager

Congélateur : Non	Glaçons : Non
Micro-ondes : Non	Four : Non
Réchaud électrique : Non	Réchaud gaz : Non
Lave-linge : Non	Chauffage : Non
Antenne TV : Non	Lave-vaisselle : Non
TV SAT : Non	TV : Non

Divers

Remarks :
Part Exchange and Finance available.
This stunning Finnmaster T7 is available here at Largs Yacht Haven on its own berth , this is a must see boat , the build quality and look of this boat is amazing with a solid and high-quality finish. The amount packed aboard this T7 is unrivalled for the size of boat and she has an impressive specification. <p>She has had one owner from new, has been meticulously maintained her to an immaculate standard. One of the features that has really impressed us is the foldable cockpit cover. Once opened it completely encloses the cockpit, however on a sunny day the cover can be neatly folded away and stored under the aft seating. <p>Down below she has a huge double berth with the addition of an infill to make the berth bigger. The berth is surrounded by windows both in the hull and skylights on the bow of the boat making it a really light and airy space. There is also a toilet. <p>She is powered by a Yamaha 250hp V6 Outboard which has only done 220 hours. This is an upgraded model as the standard is the 150hp. This will push the boat up to 40 knots!

Internal fuel tank 227 litres
Waste holding tank 47 litres
Water 39 litres

Electrical

Double Battery System
Bennett Electric Windlass
1 x 12V output and 1 x USB output
2 USB in berth
2 USB in main cockpit
Shore power

Navigation

Garmin GPSMAP 12X2 PLUS
Navigation lights
LED Docking lights

Deck

Extended panoramic windscreen with wipers
Steps from cockpit up onto forepeak through opening section of windscreen
Adjustable helm seat with folding backrest
Reversible navigators seat to port
Silvertex cushions
Teak on cockpit floor
Cockpit table
Stainless Steel Handrails
Stainless Steel boarding ladder
Storage in aft port and starboard lockers
Storage under cockpit seats
Stainless Steel Anchor and chain and warp
Remote control anchor windlass
Lines and fenders with covers
Cockpit shower
Fusion radio with speakers
Stainless Ski pole
Stainless folding mid cleats

Canvas

Cockpit Tonneau cover

Safety

Electric Bilge Pump

Accommodation

Spacious forward cabin with large double bed
Manual seawater toilet to starboard
Cabin carpet and curtains
LED interior lights
Step up into the cockpit and you have a Dometic fridge under the navigators seat, and a sink to port

Construction

White GRP Hull
Last Antifouled 2024

Documentation

Original Purchase Invoice
Declaration of Conformity
Builders Certificate

Owners Manual</p>

Mechanical :

<p>Upgraded engine to 250V6 4.2 litre Yamaha

Engine Hours - 220 hours

Engine warranty until 23/10/2026

Last engine service jan 2024

Digital hydraulic steering assist

Trim tabs with indicator

Bowthruster

</p>





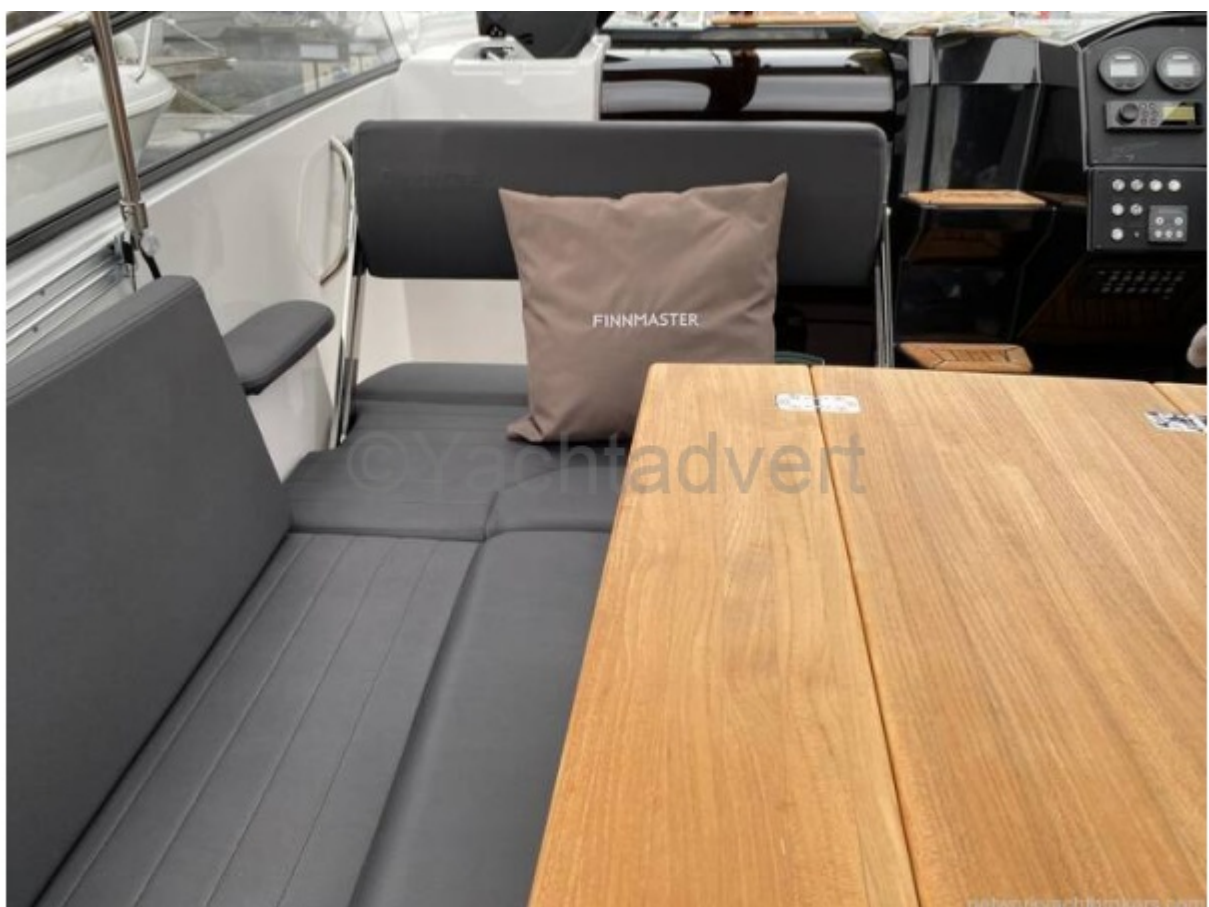








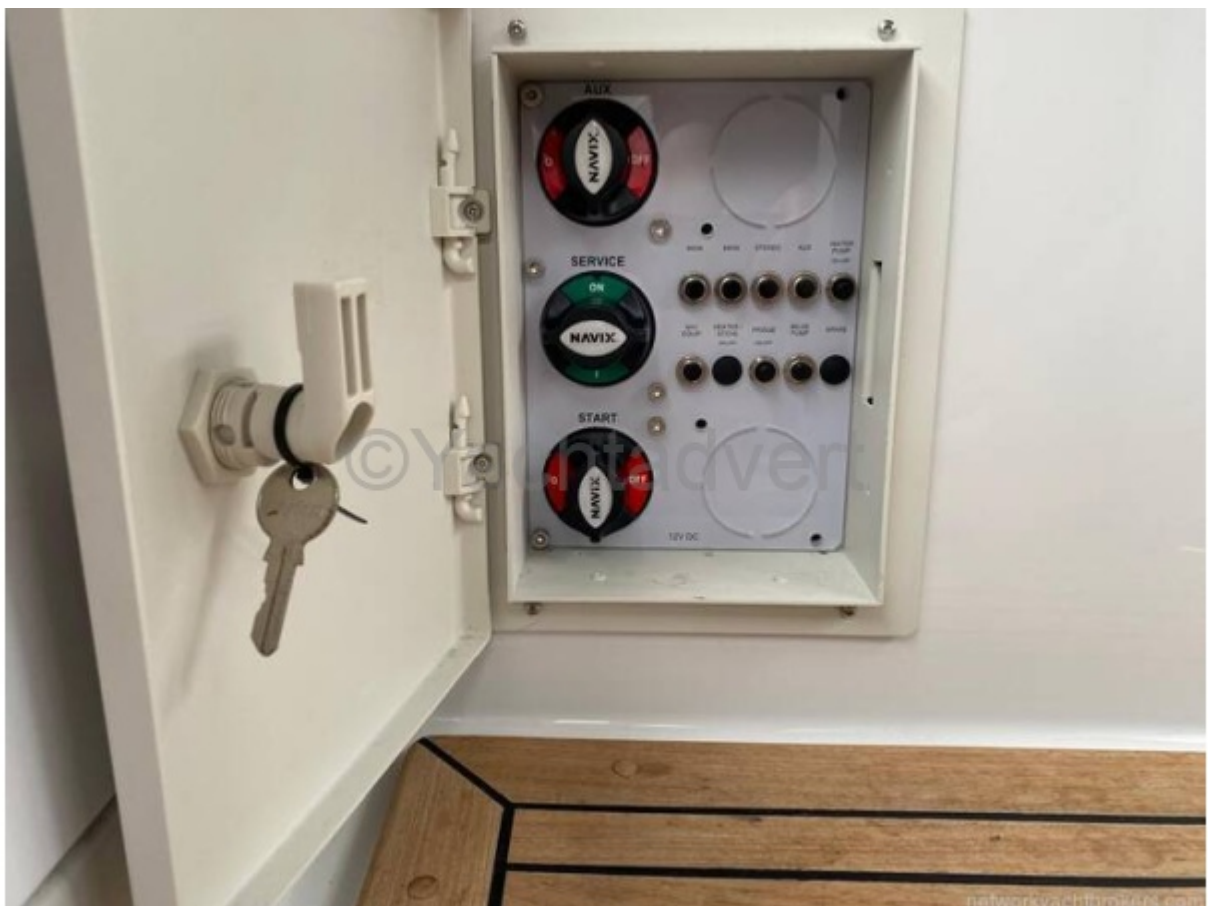






































networkyachtbrokers.com



networkyachtbrokers.com







