



55 Fly Bridge - 1988

<https://www.yachtadvert.com/1028-fairline-55-fly-bridge.html>

240 000 EUR incl vat



General

Year : 1988

Length : 55.00 Ft

Life Raft : No

Leasing in progress : No

Builder : Fairline

Material : GRP

Beam : 14.00 Ft

Area : Bodrum, Turkey

Engines

Fuel : Diesel

Power Unit. (HP) : 375

Engine Brand : Volvo Penta

Engine(s) : 2

Facilities

Flybridge : No

Helm : No

Electronics

Autopilot : No

GPS : No

VHF : No

Watermaker : No

Radar : No

Sounder : No

Chartplotter : No

Converter 12/220 : No

Bridge equipment

Hydraulic Gangway : No

Bath platform : No

Winter cover : No

Sprayhood : No

Teak cockpit : No

Furling mainsail : No

Gangway : No

Davits : No

Electric windlass : No

Cockpit awning : No

Teak deck : No

Furling genoa : No

Spinnaker : No

Main equipment

Stern thruster : No

AC : No

Black Water : No

Tender : No

Bow Thruster : No

Marine Generator : No

Hot water : No

Flaps : No

Tender Engine : No

Household appliances

Freezer : No

Microwaves : No

Electric stove : No

Washing machine : No

TV antenna : No

SAT-TV : No

IceMaker : No

Oven : No

Gas stove : No

Heater : No

Dishwasher : No

TV : No

Various

Remarks :

Despite its age, this vessel has been exceptionally well-maintained and remains in great condition. It offers a perfect combination of comfort, performance, and style, making it ready for immediate use. Fully equipped with essential features and amenities, it's ideal for both short trips and extended cruising. Whether you're an experienced sailor or new to boating, this is a rare opportunity to own a high-quality boat that's been carefully preserved over the years. Viewings are highly recommended to fully appreciate its value

Accommodation :

ACCOMMODATION

- No. of Berths: 2 Double staterooms plus twin cabin
- No. of Cabins: 3 plus crew
- Flooring: Hardwood saloon, carpet below (new)
- Chart Table
- Saloon Table
- Hanging Locker(s): 6
- Air Conditioning: 80,000 BTU
- Number of Heads: 3
- Toilet Type: Electric
- Shower: 3
- Hob: Induction
- Oven: Combination
- Grill: Microwave
- Galley Sink:
- Refrigerator:
- Water System: Pressurised
- Hot Water: Immersion / Calorifier
- Stereo: BOSE music system all cabins
- DVD Player:

Inventory :

Deck Equipment

- Electric anchor winch
- Flybridge wetbar with BBQ/Griddle, sink and fridge
- Flybridge CD/Radio
- Aft warping drums
- Cockpit cushions
- Bow sunbeds with cushions
- Teak-laid cockpit, flybridge, flybridge steps
- Hydraulic passerelle/tender crane
- Teak bathing platform with swim ladder and transom shower
- Cockpit and camper covers
- Bimini
- White exterior mood lights

Navigation

- GPS
- Chartplotter
- Auto-pilot
- Radar
- Depth sounder
- Log-speedometer
- Compass

Ship's Systems

- Electro-hydraulic trim tabs
- Upgraded bow thruster
- Air-conditioning/heating
- Battery charger
- Electric and manual bilge pumps
- Holding tank with macerator
- 10 kw Generator
- Shore power
- Solar Panel

Interior Fitout

- Master cabin with large double berth and ensuite bathroom with separate shower
- 2 x guest cabins with twin berths (convertible to double berth)
- Guest heads with separate shower, washbasin and electric toilet

Interior Equipment

- Fully equipped galley including ceramic hob, microwave, deep freezer, refrigerator, twin sinks
- Television, DVD player and CD player with BOSE saloon audio system
- Washing machine/dryer and pull-out ironing board in utility room
- Digital safe

Mechanical :

Twin Volvo Penta D12-715hp diesel engines; White hull; 3 cabins accommodating 6 guests; Electro-hydraulic trim tabs; Upgraded bow thruster; Teak

decks•Hydraulic passerelle/tender crane•Cockpit and camper covers•Bimini•
Air-conditioning• Generator• Washing machine/dryer• Foredeck sunbeds, with
cushions• Electric anchor winch

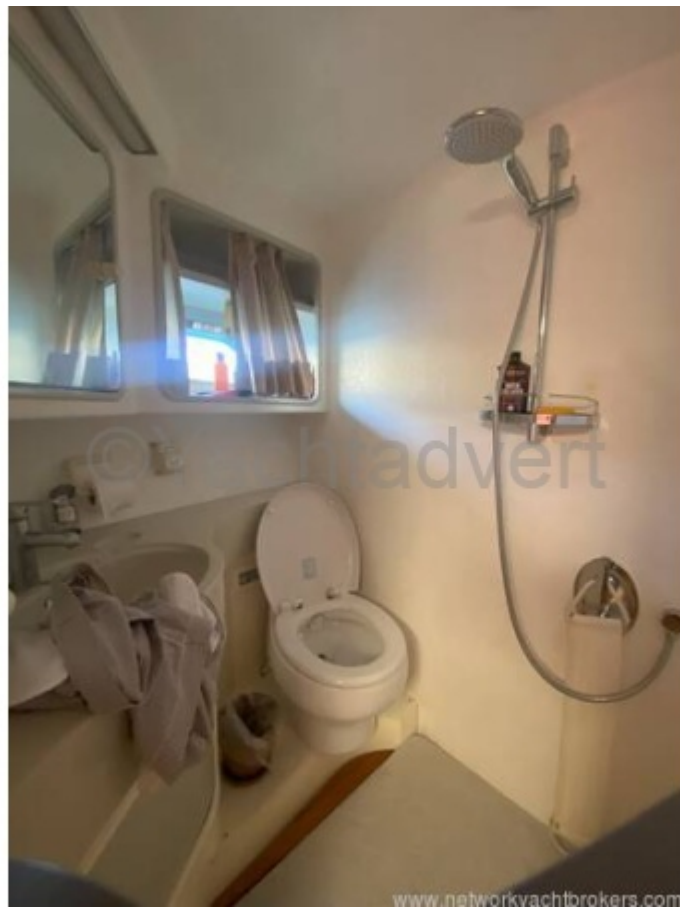




















www.networkyachtbrokers.com



www.networkyachtbrokers.com





www.networkyachtbrokers.com



www.networkyachtbrokers.com

