



## Signature 535 - 2002

<https://www.yachtadvert.com/1064-trader-signature-535.html>

287 208 â,- incl vat



### General

Builder : Trader

Material : GRP

Beam : 15.00 Ft

Life Raft : No

Leasing in progress : No

Subtype : Pleasure

Year : 2002

Length : 54.00 Ft

Draft : 0.00 Ft

Area : Dartmouth, United Kingdom

### Engines

Fuel : Diesel

Power Unit. (HP) : 660

Engine Brand : Caterpillar 3196

Engine(s) : 2

## Facilities

Flybridge : No

Helm : No

---

## Electronics

Autopilot : No

GPS : No

VHF : No

Watermaker : No

Radar : No

Sounder : No

Chartplotter : No

Converter 12/220 : No

---

## Bridge equipment

Hydraulic Gangway : No

Bath platform : No

Winter cover : No

Sprayhood : No

Teak cockpit : No

Furling mainsail : No

Gangway : No

Davits : No

Electric windlass : No

Cockpit awning : No

Teak deck : No

Furling genoa : No

Spinnaker : No

---

## Main equipment

Stern thruster : No

AC : No

Black Water : No

Tender : No

Bow Thruster : No

Marine Generator : No

Hot water : No

Flaps : No

Tender Engine : No

---

# Household appliances

Freezer : No

Microwaves : No

Electric stove : No

Washing machine : No

TV antenna : No

SAT-TV : No

IceMaker : No

Oven : No

Gas stove : No

Heater : No

Dishwasher : No

TV : No

## Various

**Remarks :**

*Mistral Star* is a superb example of the highly regarded Trader 535 Signature — combining refined craftsmanship, generous accommodation, and proven offshore capability. Built in 2002 and maintained to an exceptional standard, she has benefitted from approximately £90,000 of upgrades since 2020, including systems, navigation, upholstery, air conditioning, and deck refit. She is truly turn-key and ready for the season.

One of the best-presented Trader 535s on the market — freshly upgraded, beautifully maintained, and absolutely turnkey. She's ready for summer cruising with no major works required. A serious alternative to brands like Fleming, Hardy or Grand Banks, at a fraction of the cost.

Designed for extended cruising or liveaboard use, she offers a spacious and practical layout, full climate control, quality craftsmanship, and all the creature comforts expected of a serious offshore motor yacht. Ideal for private use or entertaining guests.

**Accommodation :**

**General**

- 6'4" headroom throughout
- Teak & holly flooring
- Handcrafted high-gloss teak joinery
- Cream leather and alcantara upholstery (refreshed 2024)
- Reverse-cycle air conditioning and heating
- Saloon**
- Spacious saloon with 3-seater sofa and club chairs
- Fusion system, B&W speakers, and Smart TV
- Coffee table or dining table setup
- Galley**
- Smeg combi microwave
- Full-size oven
- Halogen hob
- Full-height fridge/freezer
- Washer/dryer
- Ample stowage and workspace
- Cabins**
- Owner's Suite (Aft): Full-beam king-size stateroom with vanity, dressing area, generous wardrobes, and ensuite with separate shower and mini bath

data-end="3610">VIP Cabin (Forward)</strong>: Centreline king berth, ensuite access, excellent storage</p> </li> <li data-start="3671" data-end="3756"> <p data-start="3673" data-end="3756"><strong data-start="3673" data-end="3705">Guest Twin Cabin (Starboard)</strong>: Two single berths, dressing table, good storage</p> </li> </ul><strong>Inventory :</strong><p data-start="1850" data-end="1880"><strong data-start="1850" data-end="1878">Navigation & & Electronics</strong></p><ul data-start="1881" data-end="2187"> <li data-start="1881" data-end="1932"> <p data-start="1883" data-end="1932">Raymarine Axiom HybridTouch chartplotter (2020)</p> </li> <li data-start="1933" data-end="1961"> <p data-start="1935" data-end="1961">Raymarine RL80 CRC Radar</p> </li> <li data-start="1962" data-end="1985"> <p data-start="1964" data-end="1985">Raymarine Autopilot</p> </li> <li data-start="1986" data-end="2003"> <p data-start="1988" data-end="2003">Raymarine GPS</p> </li> <li data-start="2004" data-end="2032"> <p data-start="2006" data-end="2032">Raymarine DSC VHF (2020)</p> </li> <li data-start="2033" data-end="2093"> <p data-start="2035" data-end="2093">Raymarine Depth Sounder (new multifunction display 2024)</p> </li> <li data-start="2094" data-end="2115"> <p data-start="2096" data-end="2115">Navtex Nav 6 Plus</p> </li> <li data-start="2116" data-end="2135"> <p data-start="2118" data-end="2135">Sestrel Compass</p> </li> <li data-start="2136" data-end="2157"> <p data-start="2138" data-end="2157">ARC Aquafix EPIRB</p> </li> <li data-start="2158" data-end="2187"> <p data-start="2160" data-end="2187">Liferaft (requires service)</p> </li> </ul><p data-start="2189" data-end="2209"><strong data-start="2189" data-end="2207">Deck Equipment</strong></p><ul data-start="2210" data-end="2464"> <li data-start="2210" data-end="2237"> <p data-start="2212" data-end="2237">Electric 2.2kW windlass</p> </li> <li data-start="2238" data-end="2257"> <p data-start="2240" data-end="2257">60lb CQR anchor</p> </li> <li data-start="2258" data-end="2305"> <p data-start="2260" data-end="2305">Fortress size 18 kedge anchor with 80m warp</p> </li> <li data-start="2306" data-end="2401"> <p data-start="2308" data-end="2401">Full teak side and foredecks (refurbished and recaulked 2024 with 500 new stainless dowels)</p> </li> <li data-start="2402" data-end="2439"> <p data-start="2404" data-end="2439">Polished stainless steel fittings</p> </li> <li data-start="2440" data-end="2464"> <p data-start="2442" data-end="2464">Hydraulic passerelle</p> </li> </ul><p data-start="2466" data-end="2481"><strong data-start="2466" data-end="2479">Flybridge</strong></p><ul data-start="2482" data-end="2644"> <li data-start="2482" data-end="2505"> <p data-start="2484" data-end="2505">Teak-laid flybridge</p> </li> <li data-start="2506" data-end="2525"> <p data-start="2508" data-end="2525">Twin helm seats</p> </li> <li data-start="2526" data-end="2558"> <p data-start="2528" data-end="2558">Large C-shaped guest seating</p> </li> <li data-start="2559" data-end="2591"> <p data-start="2561" data-end="2591">Integrated cool box and sink</p> </li> <li data-start="2592" data-end="2610"> <p data-start="2594" data-end="2610">Tender storage</p> </li> <li data-start="2611" data-end="2644"> <p data-start="2613" data-end="2644">New flybridge upholstery (2024)</p> </li> </ul><p data-start="2646" data-end="2660"><strong data-start="2646" data-end="2658">Aft Deck</strong></p><ul data-start="2661" data-end="2768"> <li data-start="2661" data-end="2688"> <p data-start="2663" data-end="2688">Large teak dining table</p> </li> <li data-start="2689" data-end="2730"> <p data-start="2691" data-end="2730">Wet island with sink, fridge, and BBQ</p> </li> <li data-start="2731" data-end="2768"> <p data-start="2733" data-end="2768">Bimini and new aft enclosure (2024)</p> </li> </ul><p data-start="2770" data-end="2788"><strong data-start="2770" data-end="2786">Sound System</strong></p><ul data-start="2789" data-end="2870"> <li data-start="2789" data-end="2847"> <p data-start="2791" data-end="2847">Fusion audio with Bowers & Wilkins speakers (new 2024)</p> </li> <li data-start="2848" data-end="2870"> <p data-start="2850" data-end="2870">Smart TV in saloon</p> </li> </ul><strong>Mechanical :</strong><p data-start="1135" data-end="1161"><strong data-start="1135" data-end="1159">Engines & Propulsion</strong></p><ul data-start="1162" data-end="1421"> <li data-start="1162" data-end="1226"> <p data-start="1164" data-end="1226">Twin Caterpillar 3196 660hp diesel engines (approx. 1500hrs)</p> </li> <li data-start="1227" data-end="1259"> <p data-start="1229" data-end="1259">Full engine servicing (2024)</p> </li> <li data-start="1260" data-end="1295"> <p data-start="1262" data-end="1295">500+ NM range at cruising speed</p> </li> <li data-start="1296" data-end="1358"> <p data-start="1298" data-end="1358">New engine room fans, water pump & accumulator tank (2024)</p> </li> <li data-start="1359" data-end="1395"> <p data-start="1361" data-end="1395">Extensive engine room insulation</p> </li> <li data-start="1396" data-end="1421"> <p data-start="1398" data-end="1421">Fire suppression system</p> </li> </ul><p data-start="1423" data-end="1449"><strong data-start="1423" data-end="1447">Electrical & Systems</strong></p><ul data-start="1450" data-end="1718"> <li data-start="1450" data-end="1492"> <p data-start="1452" data-end="1492">Onan 13.5kVA generator (serviced 2024)</p> </li> <li data-start="1493" data-end="1524"> <p data-start="1495"

Hydraulic 20hp bow thruster

- Shorepower with full management system
- New battery banks (2024)
- New Victron battery charger (2024)
- Reverse-cycle air conditioning and heating system (new chiller installed 2024)

**Tankage**

- Fuel: approx. 2,290 litres
- Water: approx. 909 litres
- Holding tank with pump-out































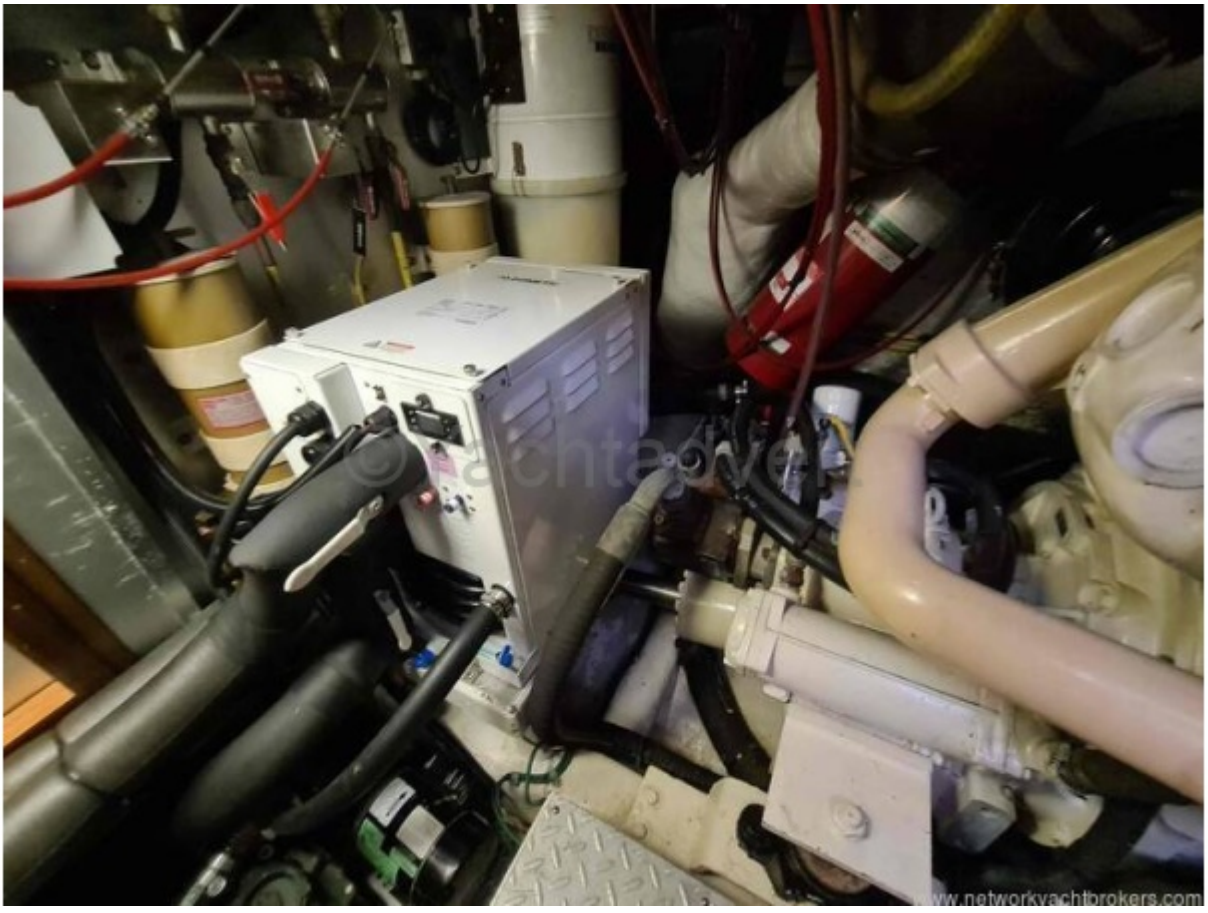














www.networkyachtbrokers.com









www.networkyachtbrokers.com



www.networkyachtbrokers.com











