



Guernsey 10M - 1986

<https://www.yachtadvert.com/1093-guernsey-10m.html>

22 565 â,- incl vat



General

Length : 104.99 Ft

Life Raft : No

Leasing in progress : No

Year : 1986

Beam : 32.81 Ft

Area : Largs, United Kingdom

Engines

Fuel : Diesel

Power Unit. (HP) : 86

Engine Brand : Mercedes

Engine(s) : 1

Facilities

Flybridge : No

Helm : No

Electronics

Autopilot : No

GPS : No

VHF : No

Watermaker : No

Radar : No

Sounder : No

Chartplotter : No

Converter 12/220 : No

Bridge equipment

Hydraulic Gangway : No

Bath platform : No

Winter cover : No

Sprayhood : No

Teak cockpit : No

Furling mainsail : No

Gangway : No

Davits : No

Electric windlass : No

Cockpit awning : No

Teak deck : No

Furling genoa : No

Spinnaker : No

Main equipment

Stern thruster : No

AC : No

Black Water : No

Tender : No

Bow Thruster : No

Marine Generator : No

Hot water : No

Flaps : No

Tender Engine : No

Household appliances

Freezer : No

Microwaves : No

Electric stove : No

Washing machine : No

TV antenna : No

SAT-TV : No

IceMaker : No

Oven : No

Gas stove : No

Heater : No

Dishwasher : No

TV : No

Various

Remarks :

Calypso is an excellent example of this Guernsey 10m Motor Yacht traditionally built of Wood, African Mahogany on Oak, slightly styled on fishing boat lines. recently launched at Largs Yacht Haven July 2024 with her Underwater hull in good condition, topsides and deck in good order. Built-in Guernsey, a one-off design, she is a strong, sturdy boat, perfect for relaxed coastal cruising and with a spacious cockpit, ideal for diving or fishing. Excellent visibility from the wheelhouse.

Accommodation :

Accommodation

Large walk in locker in bow with door from saloon.

Ladder access to the deck through hatch, outboard stored on rack, chain chute and locker. Aft Pullman style berths to starboard. The port bunk can be lowered to allow space to be used as a settee or as a single berth, fixed portlights.

Storage to port and door to heads compartment.

Through to the saloon area with fore and aft seating with dining table to port, the table can be lowered to convert to a double berth. Locker and storage, opening portholes and fixed portlights. Gale opposite to starboard.

Steps up to wheelhouse. Single helm station to port with great visibility. Glass windows all around with port and starboard sliding windows.

L shaped seating to aft and starboard with storage behind and under and also access to engine. Under floor access to batteries, fuel and water tanks, engine access.

Door aft to cockpit.

Galley

Plastimo Atlantic two ring gas stove oven and grill

Micro Eco Plus 6 litre gas water heater

Sink

Cold water supply and hot water by gas water heater Storage

Fixed portlight and two opening portholes

Heads

Jabsco sea toilet Sink

Shower

Cold water supply and hot water by galley gas water heater Fixed port light

Inventory :

Deck gear

Stainless steel pulpit and pushpit

Stanchions with single guard wire and wood capping rail Double bow roller

Maxwell Nilsson electric anchor windlass with deck foot 15kg Bruce type anchor with approximately 30m chain

15kg Bruce kedge anchor

Stern steps for access to and from dinghy

Various warps and fenders

Safety equipment

Manual and electric bilge pumps Mcmurdo Smartfind 406

EPIRB

Fire blanket

Carbon monoxide </p><p>Instruments

Engine instruments, oil, temperature, amps, volts, rev and rudder position Two fuel tank gauges and water tank gauge

Garmin Echomap CV plotter Autohelm 6000+ autopilot

Clipper depth

Clipper Duet, log and depth ICOM IC-M56 VHF radio

Sestral compass

Hand held compass

Eco Worthy solar panel controller

Pioneer CD Bluetooth Mixtrax player with wheelhouse speakers

12V sockets </p><p>

Cockpit

Spacious cockpit

Teak deck

Step up to side decks

Aft locker, access to emergency steering Gas locker

Engine access hatch

Folding chairs

 </p><p>

Safety equipment

Manual and electric bilge pumps Mcmurdo Smartfind 406 EPIRB, Fire blanket

Carbon monoxide </p><p>Disclaimer

The Company offers the details of this vessel in good faith but cannot guarantee or warrant the accuracy of this information nor warrant the condition of the vessel. A buyer should instruct his agents, or his surveyors, to investigate such details as he may desire to be validated. This vessel is offered subject to prior sale, or change or withdrawal without notice.</p>

Mechanical :

<p>Mercedes OM314 85hp diesel engine Injectors serviced 2021

Engine hours 6,972 January 2022 Hydraulic steering

110Ah engine battery

Two 110Ah service batteries

Two roof mounted solar panels Eco Worthy solar power controller

Shore power socket

C-Tek 5A battery charger

Lvyan 3000w inverter

ESR RCD switches

Taylor diesel cabin heater with separate tank Morco Eco Plus 6 litre gas water heater

Further </p><p>Insurance survey undertaken July 2021 which was very satisfactory. Underwater hull in good condition, topsides and deck in good order.

Pioneer Steady 260 dinghy with Suzuki 2hp outboard included.

Originally the boat was fitted with a mast and mizzen sail. The Mizzen mast has been removed.

Mizzen sail in good condition.</p><p>Calypso was stripped of all old antifouling, re-antifouled and painted 2021.</p>















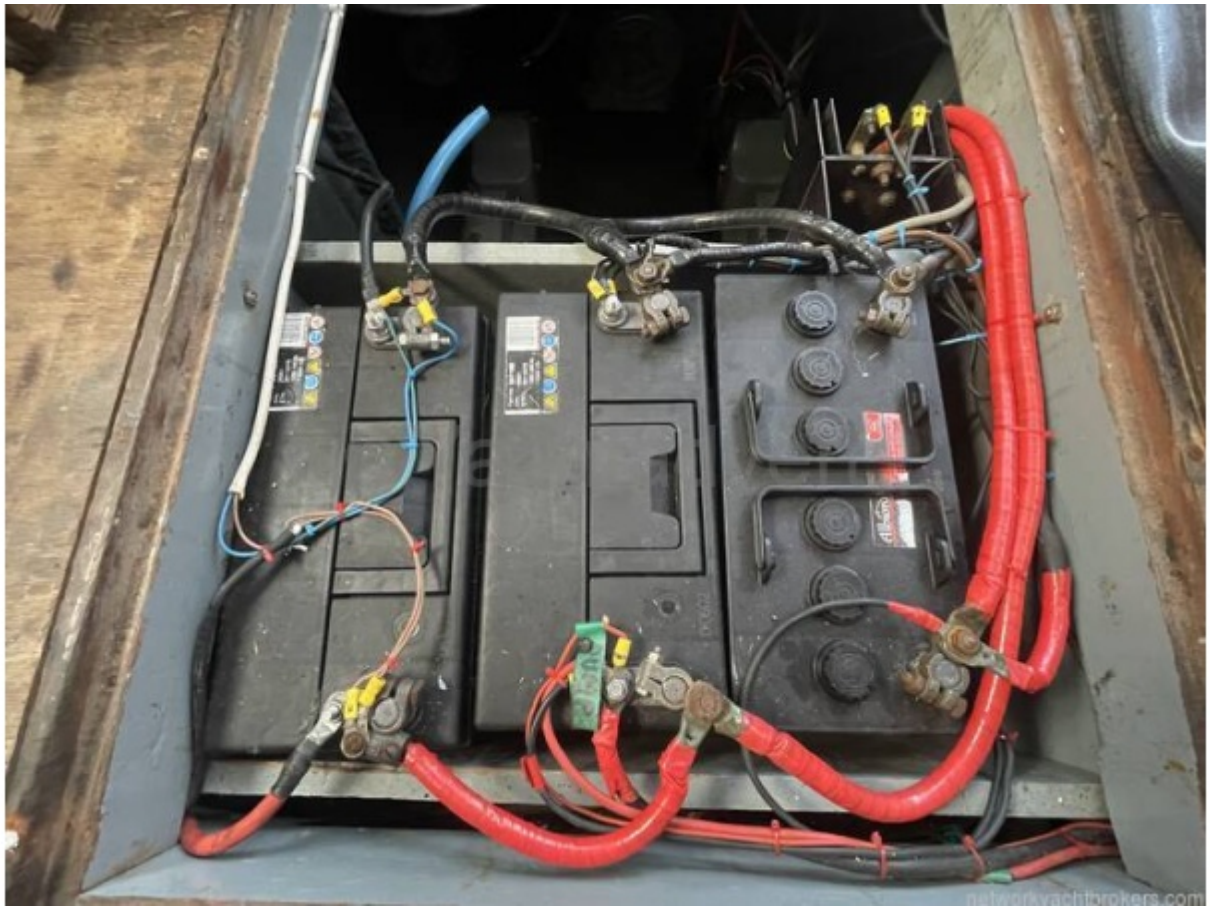














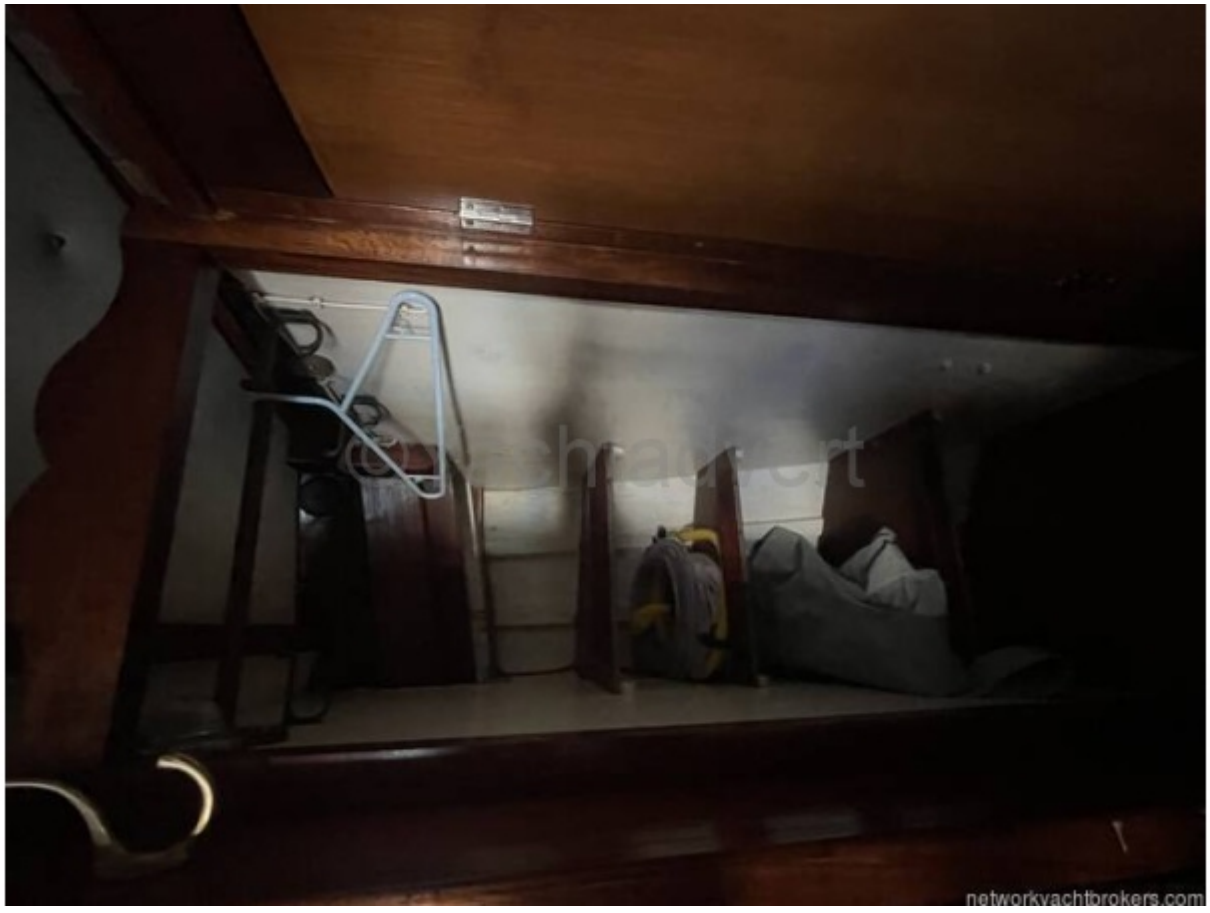












networkyachtbrokers.com



networkyachtbrokers.com

