



**27 - 1983**

<https://www.yachtadvert.com/1166-moody-27.html>

**11 504 â,- incl vat**



---

## General

Builder : Moody

Material : GRP

Beam : 9.00 Ft

Area : Marchwood, United Kingdom

Subtype : Pleasure

Year : 1983

Length : 27.00 Ft

Life Raft : No

Leasing in progress : No

---

## Engines

Fuel : Diesel

Power Unit. (HP) : 20

Engine Brand : Beta Marine

Engine(s) : 1

## Facilities

Flybridge : No

Helm : No

---

## Electronics

Autopilot : No

GPS : No

VHF : No

Watermaker : No

Radar : No

Sounder : No

Chartplotter : No

Converter 12/220 : No

---

## Bridge equipment

Hydraulic Gangway : No

Bath platform : No

Winter cover : No

Sprayhood : No

Teak cockpit : No

Furling mainsail : No

Gangway : No

Davits : No

Electric windlass : No

Cockpit awning : No

Teak deck : No

Furling genoa : No

Spinnaker : No

---

## Main equipment

Stern thruster : No

AC : No

Black Water : No

Tender : No

Bow Thruster : No

Marine Generator : No

Hot water : No

Flaps : No

Tender Engine : No

---

# Household appliances

Freezer : No

Microwaves : No

Electric stove : No

Washing machine : No

TV antenna : No

SAT-TV : No

IceMaker : No

Oven : No

Gas stove : No

Heater : No

Dishwasher : No

TV : No

---

## Various

**Remarks :**

The Moody 27 is a easily sailed safe cruising yacht. They are a good combination of speed, stability and good accommodation&nbsp; They are ideal for first time boat owners as well as experienced sailors looking for a good coastal cruiser.&nbsp;

'Catspaw' is a ready to sail away Moody 27. She has been well maintained by her current owner who has made various upgrades. She has 5-6 berths, a quarter berth&nbsp; to port, a spacious fore cabin and two settee berths in the saloon. The galley is practical and her separate heads has a sea toilet and sink.

She comes fully equipped including a dinghy with a 2.5hp Suzuki outboard engine, warps, fenders, lines, anchors and more.&nbsp;

She is available for viewing 7 days a week at Marchwood Yacht club.

**Accommodation :</strong>**

5 berths in 2 cabins

Seating in main saloon with fold out table

Fully functioning galley

Heads with sea toilet and sink

**Inventory :</strong>**

10 kg Rocna anchor 30m of 8mm chain (new 2023)

Bruce kedge anchor

Water filter

Winch handles

Bilge pump handle

Contest Compass (new 2023)

Bosuns chair

Safety lines

Life belt with automatic light

Throwing line and mounting bracket

Red ensign and flag staff

Engine spares

Assorted other spares

Deck brush

Mooring pickup hook

Boat hook

Various mooring&nbsp;lines and tow rope

Cockpit tent

Dinghy w/ 2.5hp Suzuki outboard and oars

**Mechanical :**

Beta Marine 20hp B-20HE (new 2009)

Gearbox TMC 40 P (new 2022)

3 bladed propeller

Rope cutter

Diesel hot air heating system

Main sail - Slab reefing

Genoa

Storm sail

2X gas bottles

2X electric bilge pump

Manual bilge pump

Cradle for storage at Marchwood Yacht club















www.networkyachtbrokers.com



www.networkyachtbrokers.com



www.networkyachtbrokers.com



www.networkyachtbrokers.com

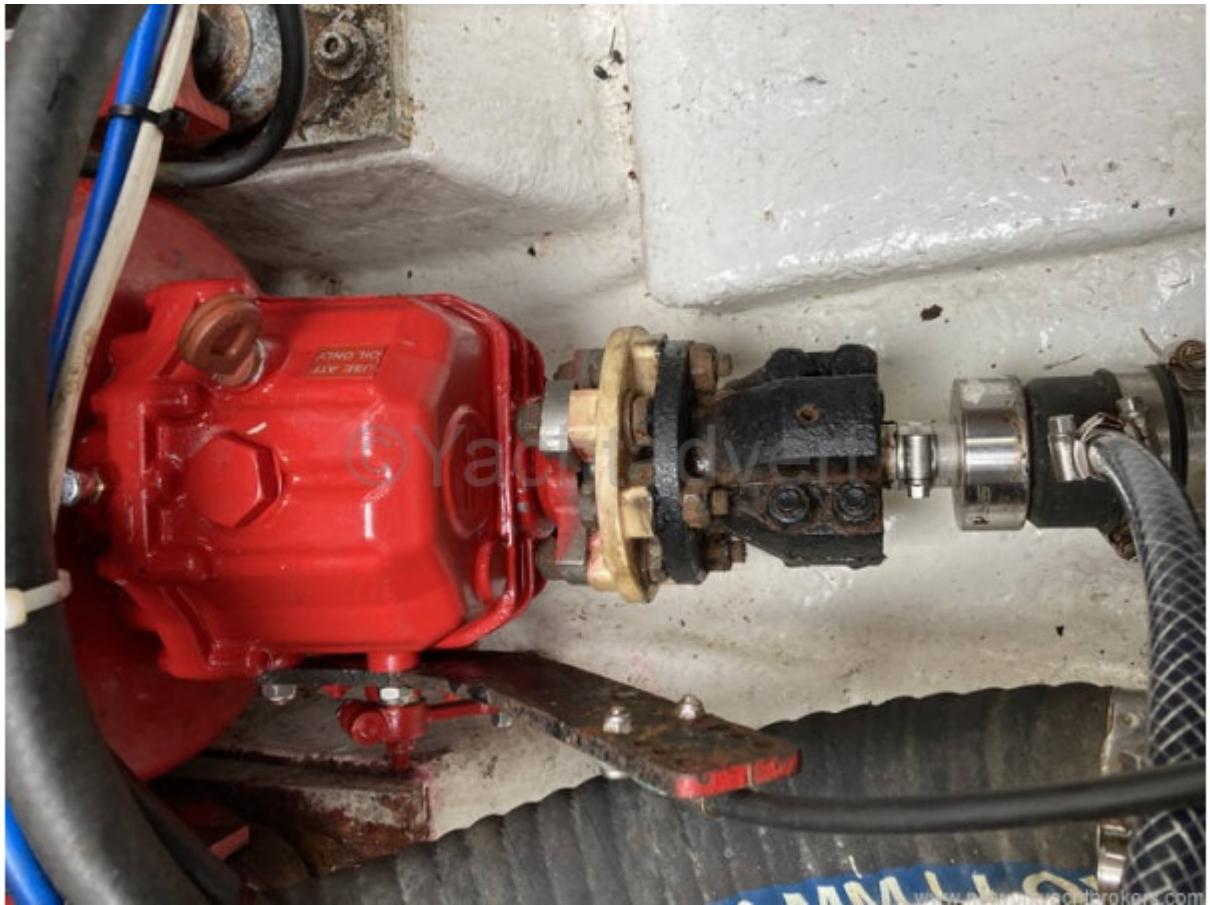


























www.networkyachtbrokers.com



www.networkyachtbrokers.com







www.networkyachtbrokers.com



www.networkyachtbrokers.com





