



## Sun Odyssey 33.1 - 1996

<https://www.yachtadvert.com/1300-jeanneau-sun-odyssey-33.1.html>

41 926 â,- incl vat



### General

Year : 1996

Length : 33.00 Ft

Life Raft : No

Leasing in progress : No

Builder : Jeanneau

Material : GRP

Beam : 11.00 Ft

Area : Queenborough, Kent, United Kingdom

### Engines

Fuel : Diesel

Power Unit. (HP) : 28

Engine Brand : Yanmar MG3F 30F

Engine(s) : 1

## Facilities

Flybridge : No

Helm : No

---

## Electronics

Autopilot : No

GPS : No

VHF : No

Watermaker : No

Radar : No

Sounder : No

Chartplotter : No

Converter 12/220 : No

---

## Bridge equipment

Hydraulic Gangway : No

Bath platform : No

Winter cover : No

Sprayhood : No

Teak cockpit : No

Furling mainsail : No

Gangway : No

Davits : No

Electric windlass : No

Cockpit awning : No

Teak deck : No

Furling genoa : No

Spinnaker : No

---

## Main equipment

Stern thruster : No

AC : No

Black Water : No

Tender : No

Bow Thruster : No

Marine Generator : No

Hot water : No

Flaps : No

Tender Engine : No

---

# Household appliances

Freezer : No

Microwaves : No

Electric stove : No

Washing machine : No

TV antenna : No

SAT-TV : No

IceMaker : No

Oven : No

Gas stove : No

Heater : No

Dishwasher : No

TV : No

## Various

**Remarks :**

**Jeanneau Sun Odyssey 33.1 yacht for sale in Kent&nbsp;**

This Jeanneau Sun Odyssey 33.1 was built in 1996 and is a very popular sailboat in the cruising community, reflecting Jeanneau's commitment to combining performance, comfort, and style with 8 berths in 3 cabins, including the saloon. This vessel benefits from standing and running rigging that was replaced in 2021, a range of sails, Garmin 3006c Chart plotter and autopilot with navigation equipment including depth gauge, speed/log, windspeed indicator. It has been prepared for long-distance cruising and includes a windvane self-steering system, wind generator, solar panels, bowthruuster and petrol generator.&nbsp;

The owner has enjoyed the vessel for the last 21 Years and is now looking to sell it as they retire from sailing. Well worth an early viewing

**Please call our Kent Office +44 (0)1634 571605 for further information or to arrange a viewing.**

**Accommodation :**

This **Jeanneau Sun Odyssey 33.1** offers a total of eight berths across three cabins plus the saloon. The forward cabin features a double V-berth, complete with under-berth storage, side shelves and wash basin with pressurised hot and cold water. The forepeak also offers an opening deck hatch overhead for ventilation and natural light.

Moving aft, the saloon consists of an off-centre table with booth seating to the starboard side with under-seat storage and two lockers above the booth area. This booth area also becomes an occasional double berth.

The linear galley is located on the portside of the saloon and features a single stainless-steel sink with pressurised hot and cold water, a gimbaled two-burner gas hob and grill, with a 240v electric combination oven, a 12-volt fridge and freezer, and ample storage. This Jeanneau Sun Odyssey 33.1 benefits from a 290-litre fresh water capacity, an 240v water immersion heater, and radio/CD player in the saloon.

Located behind the galley is a forward-facing chart table with chart storage, vessel control and navigation aids such as a Garmin 3006C Chartplotter, wind direction indicator, Garmin autopilot, VHF and GPS unit.&nbsp; &nbsp;

The heads are on the starboard side with a white sink set in a white vanity unit, with pressurised hot and cold water and a shower attachment with a built-in shower tray, and an electric marine toilet.

Located at the stern of the saloon to both port and starboard are two double-berth cabin with under-berth, hanging, and side shelf storage. These cabins also benefit from a single opening portlight to the allowing natural light and ventilation.

The companionway leads up to a large aft cockpit for a boat of its size, with bench seating surrounding the wheel steering column, featuring a digital compass, Chartplotter, depth gauge, wind direction, speed log, bow thruuster controls and engine controls.

**Inventory :**

**Deck Equipment:**

- Anchor &ndash; CQR stainless steel &ndash; 22M Chain and 22m Warp
- Kedge Anchor &ndash; Bruce
- Anchor Windlass &ndash; Electric - Lewmar
- Mainsail Cover
- Sprayhood
- Binnacle Cover
- Haylard Bags
- Bathing Platform
- Boarding Ladder
- 4 x Mooring warps.
- 10 x Fenders
- Storage cradle
- Outboard &ndash; Mariner 4hp
- Tender &ndash; 3 Person inflatable

**Navigation Equipment:**

- 3 x Steering compass &ndash; Plastimo
- Depth gauge - Clipper
- Speed log &ndash; Garmin EM18
- Windspeed &amp; Direction - Garmin
- VHF Radio &ndash; DSC &ndash; Icom
- Chartplotter &ndash; Garmin 3006C
- Integrated Radar &ndash; Garmin
- AIS Transponder and Receiver&ndash; Class B - Digital Yacht
- Satellite Phone

Electric Charts Autopilot &ndash; Garmin GHC10 Windvane Self Storage &ndash; Hydrovane fitted in 2023 Radio/CD player - with saloon and cockpit speakers Navigation lights &ndash; Mast & Deck level Paper charts - Some Anchor light. Digital clock and barometer

**Safety Equipment:**

- 3 x Fire extinguishers
- 1 x Engine room fire extinguisher
- Fire Blanket
- 1 x Gas Alarm
- 1 x Smoke Alarm
- 2 x Jackstays
- 2 x Cockpit Harness points
- Deck Light
- Spotlight
- 2 x Horseshoe Lifebuoy with floating light
- danbuoy
- Ocean 4 Person life raft with hydrostatic release &ndash; Manufactured 2022 &ndash; Last Serviced April 2025
- EPIRB
- Emergency tiller
- 2 x Manual bilge pump
- 1 x Electric bilge pump
- First Aid Kit
- Radar Reflector

**Keel/Hull**

- Fin keel, with a Spade rudder

**History & Construction**

Built in 1996, this Jeanneau Sun Odyssey 33.1 has a white GRP hull and superstructure with nonslip decks, a fin keel and spade rudder. Benefitting from a self-draining cockpit, anchor well, alloy toe rails, Stainless steel stanchions, and pulpit. She was last out of the water in April 2025 when she was antifouled and her anodes replaced.

The Jeanneau Sun Odyssey 33.1, introduced by Jeanneau in 1992, is a popular sailboat in the cruising community, reflecting Jeanneau's commitment to combining performance, comfort, and style. Designed by Daniel Andrieu, this 33.1 cruiser features a sleek hull design and well-balanced sail plan, offering excellent handling and stability in various conditions.

The owner has enjoyed the vessel for the last 21 Years and is now looking to sell the vessel as they are retiring from sailing.

**Marine Insurance:**

As one of the UK's largest Brokers with over 700 boats for sale we are able to introduce you to Boat Insurance providers that offer all types of Boat Insurance including insurance for Yachts, Sailing Boats, Motor Cruisers, Narrowboats, Inland Waterway Craft, Barges, Houseboats, Speedboats, Rigid Inflatable Boats, Waterski Boats, Jet Skis, Personal Watercraft and Dinghies.

Just click on the following link to request an insurance quote for this boat or your current boat: [www.networkyachtbrokerskent.co.uk/marineinsurance/](http://www.networkyachtbrokerskent.co.uk/marineinsurance/)

**Mechanical :**

**Spars & Sails:**

This Jeanneau Sun Odyssey 33.1 has a Bermudan sloop with masthead rig, with a 1996 deckstep IMMAST aluminium mast and boom, The stainless steel rigging was replaced in 2021; it has an adjustable backstay and kicker.

The vessel has a GOIOT furling headsail system and a slab reefing mainsail with lazyjacks and stackpack. This yacht also includes an aluminium spinnaker pole and, asymmetric bowsprit. The age of running rigging has been replaced as needed.

**Winches:**

- 2 x Sheet &ndash; Lewmar 40, self-tailing.
- 2 x Halyard &ndash; Lewmar 14, self-tailing.
- 1 Other winch &ndash; Harken 8

**Sails:**

- 1 x Mainsail &ndash; Dacron, Quay Sails &ndash; 2021, Very good condition.
- 1 x Genoa &ndash; Darcon, Quay Sails &ndash; 2021 &ndash; Very good condition.
- 1 x Assymetric Spinnaker - 1996 &ndash; Very good condition.
- 1 x Cruising Chute - 2016 &ndash; Very good condition.

**Mechanical Systems:**

This Jeanneau Sun Odyssey 33.1 has a single 1996, 3-cylinder, 28HP Yanmar MG3M 30f diesel engine with a shaft drive to a three-blade propeller with a rope cutter. The propeller, shaft cutlass and shaft bearing were last changed in April 2024.

The engine was last serviced by the owner in 2024. The Yanmar is supplied by a 46-litre capacity stainless steel fuel tank. This yacht will cruise at approximately 6 knots and has an approximate maximum speed of 7 knots. The Yanmar engine hours are unknown. This Vessel also benefits from a bow thruster. The yacht also has a 1800 watt Honda petrol generator.

**Electrical Systems:**

4 x 12-volt Lithium batteries professionally installed in 2022 (1 x engine + 1 x Domestic batteries + 2 x Bow Thruster/Anchor ) charging from the alternator, solar panel and wind generator.

This Jeanneau Sun Odyssey 33.1 also benefits from a 240-volt ring main throughout the vessel along with a 240w inverter, an immersion heater and battery charger. A battery management system ensures optimal performance of the electrical setup onboard.







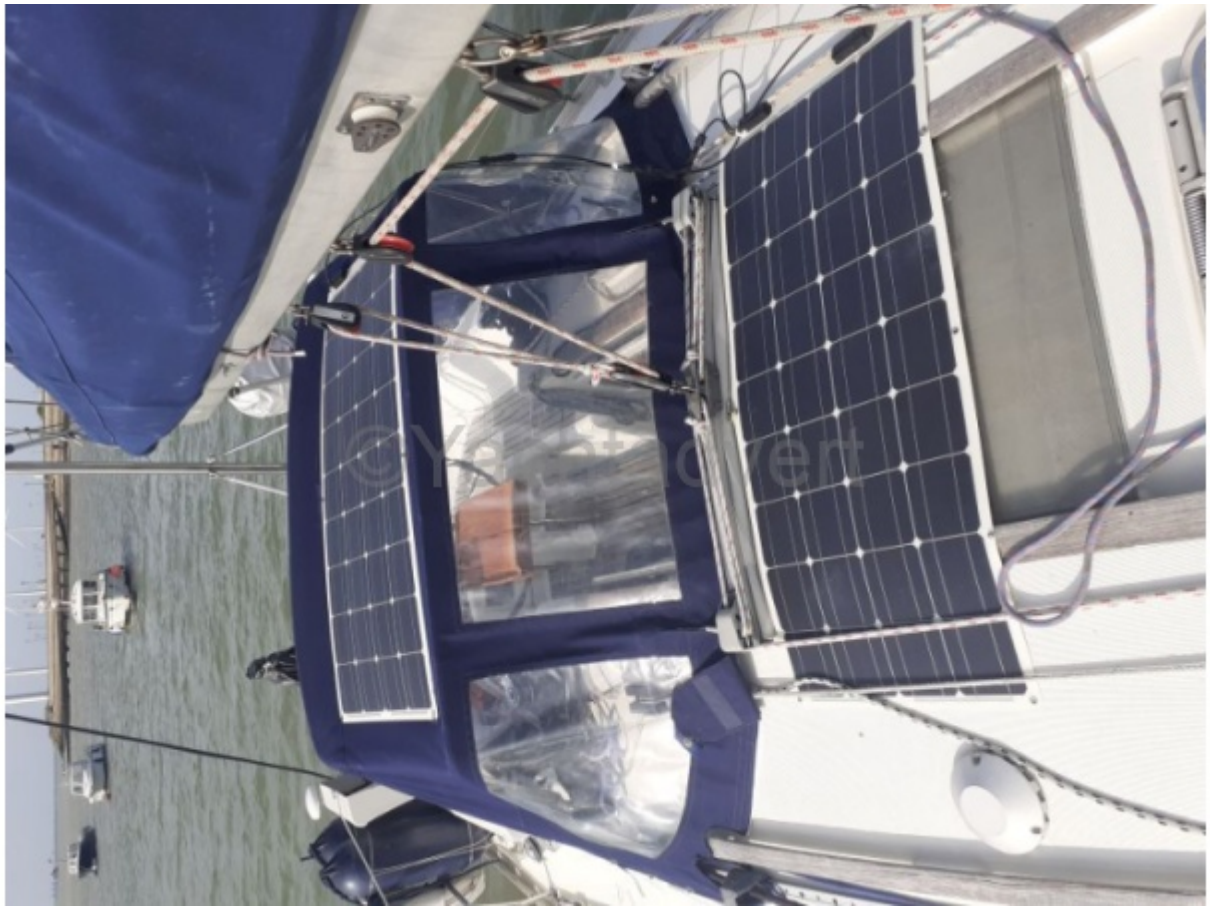


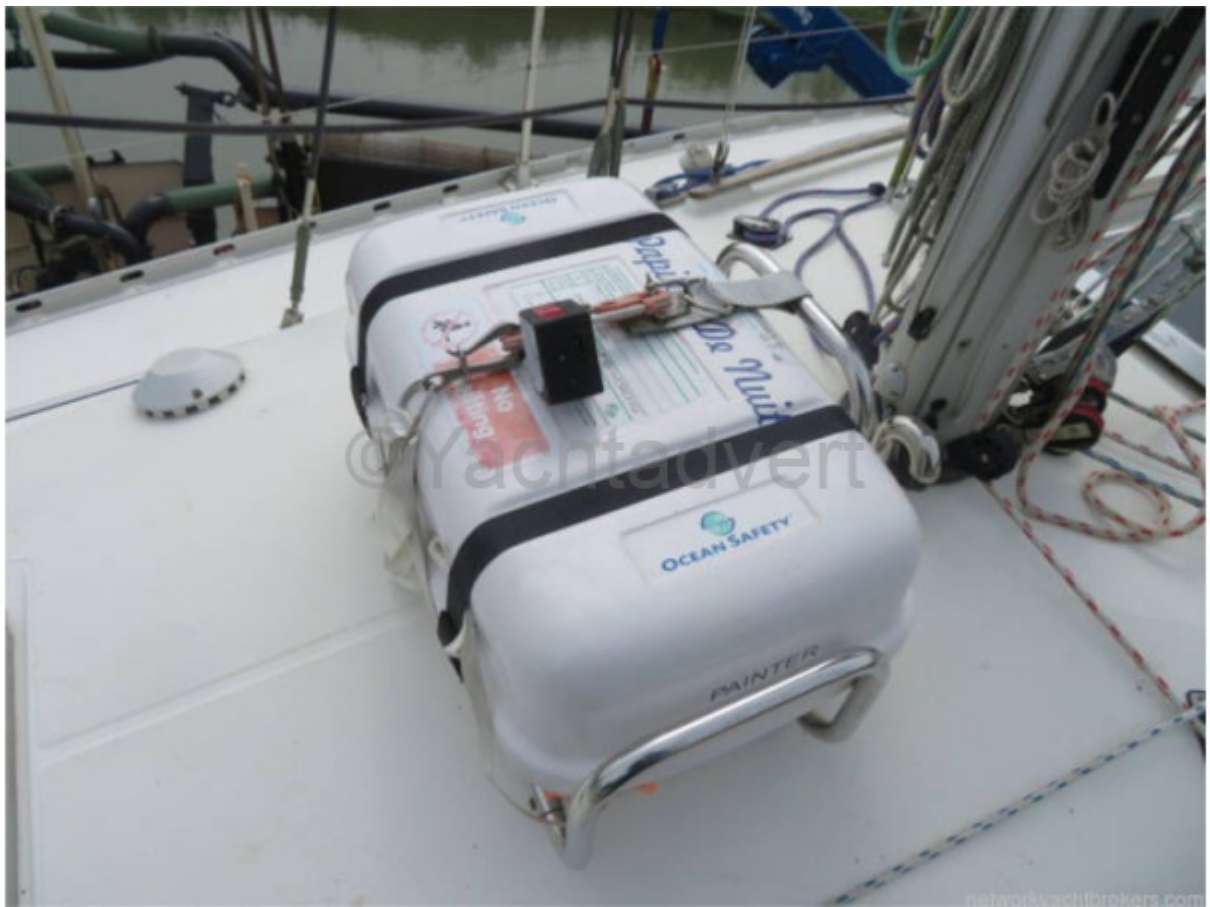




























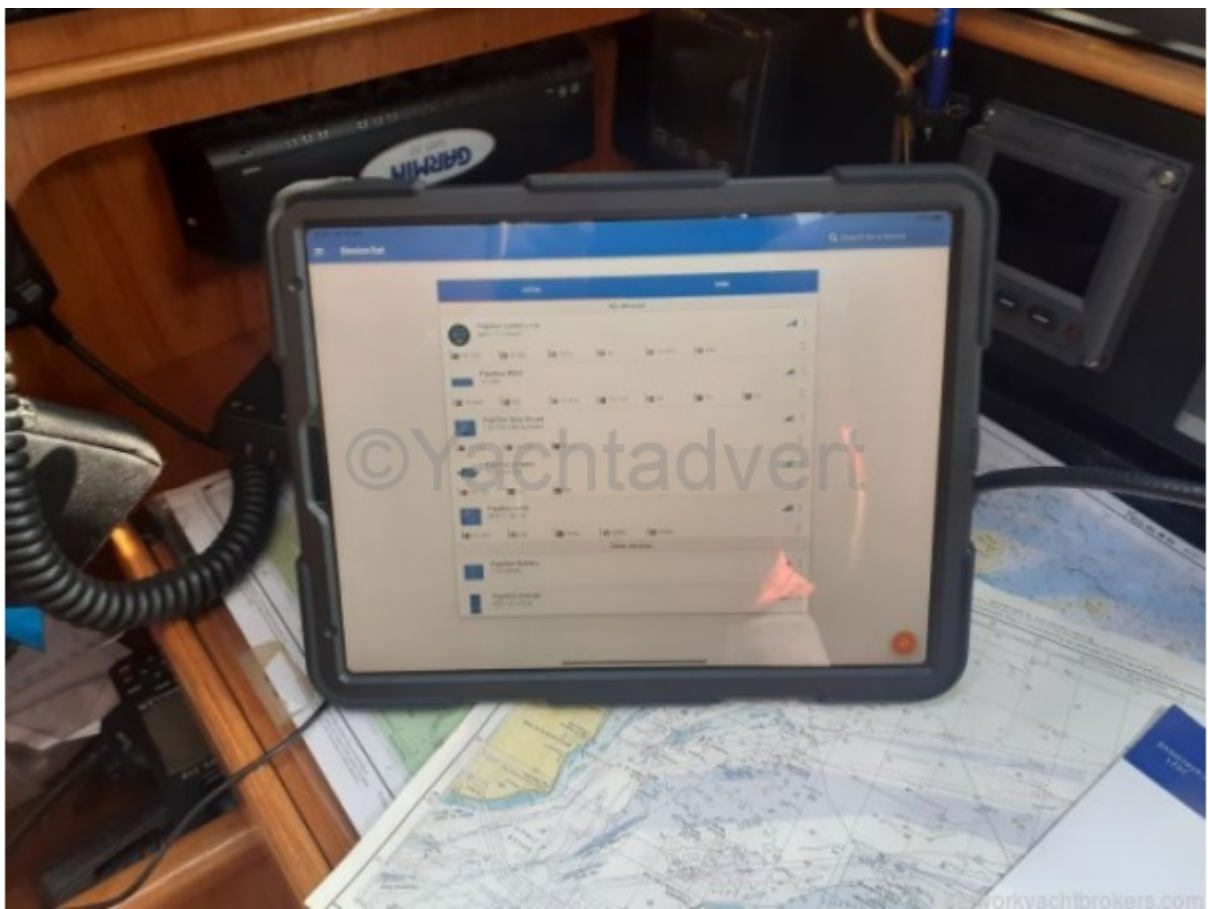
















networkyachtbrokers.com















