



**42 - 2003**

<https://www.yachtadvert.com/1347-grand-banks-42.html>

**286 059 â,- incl vat**



---

## General

Year : 2003

Length : 43.00 Ft

Draft : 0.00 Ft

Area : Troon Yacht Haven, United Kingdom

Builder : Grand Banks

Material : GRP

Beam : 14.00 Ft

Life Raft : No

Leasing in progress : No

---

## Engines

Fuel : Diesel

Power Unit. (HP) : 350

Engine Brand : Caterpillar

Engine(s) : 2

## Facilities

Flybridge : No

Helm : No

---

## Electronics

Autopilot : No

GPS : No

VHF : No

Watermaker : No

Radar : No

Sounder : No

Chartplotter : No

Converter 12/220 : No

---

## Bridge equipment

Hydraulic Gangway : No

Bath platform : No

Winter cover : No

Sprayhood : No

Teak cockpit : No

Furling mainsail : No

Gangway : No

Davits : No

Electric windlass : No

Cockpit awning : No

Teak deck : No

Furling genoa : No

Spinnaker : No

---

## Main equipment

Stern thruster : No

AC : No

Black Water : No

Tender : No

Bow Thruster : No

Marine Generator : No

Hot water : No

Flaps : No

Tender Engine : No

---

# Household appliances

Freezer : No

Microwaves : No

Electric stove : No

Washing machine : No

TV antenna : No

SAT-TV : No

IceMaker : No

Oven : No

Gas stove : No

Heater : No

Dishwasher : No

TV : No

---

## Various

**Remarks :**

The Grand Banks 42 is an ideal choice for a couple or a family needing a comfortable motor boat for extended cruising. Walkaround decks with large flybridge, aft deck and a very spacious interior with great visibility from the wheelhouse and saloon. Aft full beam owners cabin with a heads compartment and a separate shower room, forward twin or double berth guest cabin with heads compartment. Powered by twin Caterpillar 350hp engines on shaft drives, with 8 knots cruising, max 20 knots, Onan generator, bow and stern thrusters to aid marina manoeuvrability. Inflatable dinghy with 2.5hp outboard on aft deck are easily launched with the derrick and electric winch.

Part exchange and finance available

**Accommodation :**

Forward cabin with twin V berths, infill cushion to convert to a double berth, opening portlights to port and starboard, hanging locker, storage, under berth storage and opening roof hatch with blind and insect screen. Heads to starboard that also serves as a day head. Door and hatch to close cabin off from wheelhouse and saloon.

Steps up to the wheelhouse and saloon. Steps lift to access the engine room. Further access with a ladder under wheelhouse / saloon floor at helm

In the wheelhouse / saloon, to starboard, the helm position with bench seat and wood steering wheel. Forward hinged door to the side deck. Aft of helm, bar locker and L shaped settee with dining table with fold out leaves and two additional chairs.

To port, the galley and aft of this, a forward hinged door to the port side deck then and a small bench settee. This settee can be extended in length with the addition of a cushion.

Saloon aft, folding doors and steps down to the en-suite aft cabin. This full beam owners cabin has an offset island berth to starboard, new mattress 2021, plenty of storage, vanity desk with stool. Opening portlights with one to port and two to starboard. Sliding roof hatch to access the aft deck;

Shower room to starboard and heads compartment to port. Storage under the steps to the saloon / wheelhouse.

Parquet flooring throughout with fitted carpets (2014) over, blinds in forward cabin and wheelhouse / saloon, aft cabin with curtains.

Central windscreen window can be swung open and saloon aft has a sliding window.

Port and starboard forward hinged doors to the side decks.

Ample storage throughout.

**Galley**

Gaggenau electric four ring hob

Gaggenau convection microwave

Front loading fridge with ice box

Large sink

Hot and cold water system

Storage lockers and drawers  
Overhead storage locker&nbsp;  
Galley extractor fan

<strong>Aft cabin heads  
</strong>Heads compartment to port<strong>  
</strong>Manual marine toilet  
Sink  
Storage&nbsp;  
Hot and cold water system  
Warm air heating outlet  
Holding tank 250lt&nbsp;  
<strong>  
Aft cabin shower  
</strong>Shower room to starboard<strong>  
</strong>Hot and cold water system<strong>  
</strong>Opening portlight  
Storage  
Teak grating  
<strong>  
Forward heads  
</strong>Tecma electric marine toilet 2013  
Sink  
Shower  
Hot and cold water system  
Storage  
Opening portlight  
Teak grating  
Holding tank

<strong>Inventory :</strong>

</p><p><strong>Instruments  
</strong>Engine instruments  
Raymarine E120 plotter and radar&nbsp;  
Raymarine i60 wind 2013  
Simrad AP20 autopilot&nbsp;  
Simrad multi&nbsp;  
Shipmate DSC VHF radio  
Shipmate RS8400 VHF radio  
Ritchie compass  
Water and fuel gauges  
JVC CD player with MP3, Bluetooth, USB connections  
Panasonic TV  
Glomex TV aerial  
Clock and barometer  
<strong>

Flybridge instruments  
</strong>Engine instruments  
Raymarine E80 plotter and radar  
Simrad AP22 autopilot<strong>  
</strong>Shipmate RS8400 VHF radio





































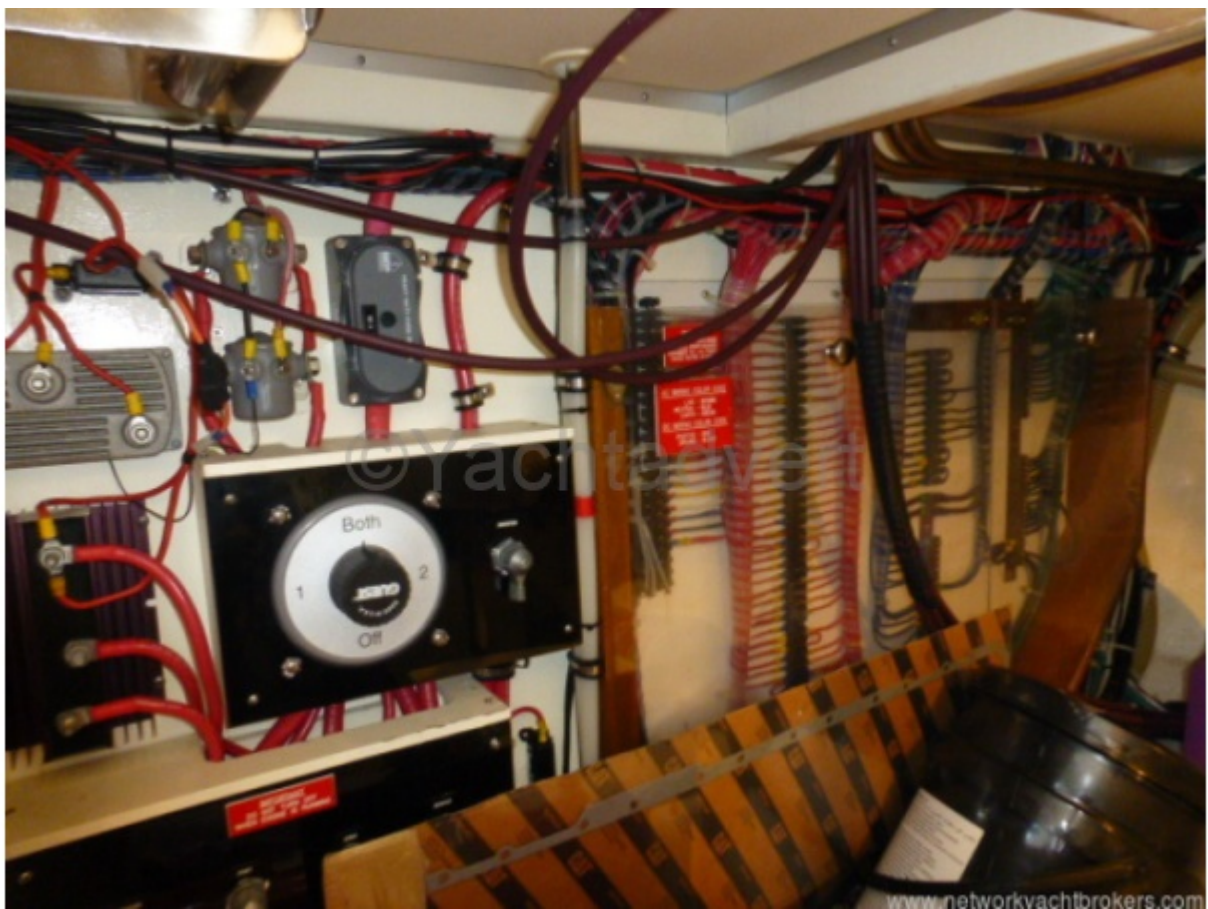




www.networkyachtbrokers.com



www.networkyachtbrokers.com





[www.networkyachtbrokers.com](http://www.networkyachtbrokers.com)



[www.networkyachtbrokers.com](http://www.networkyachtbrokers.com)





















