



31 - 1981

<https://www.yachtadvert.com/2004-tyler-boat-co.-31.html>

13 185 â,- incl vat



## General

Builder : Tyler Boat Co.

Material : GRP

Beam : 10.00 Ft

Area : Largs Yacht Haven, United Kingdom

Subtype : Pleasure

Year : 1981

Length : 30.00 Ft

Life Raft : No

Leasing in progress : No

## Engines

Fuel : Diesel

Power Unit. (HP) : 13

Engine Brand : Volvo Penta MD7A

Engine(s) : 1

# Facilities

Flybridge : No

Helm : No

# Electronics

Autopilot : No  
GPS : No  
VHF : No  
Watermaker : No

Radar : No  
Sounder : No  
Chartplotter : No  
Converter 12/220 : No

# Bridge equipment

Hydrolic Gangway : No  
Bath platform : No  
Winter cover : No  
Sprayhood : No  
Teak cockpit : No  
Furling mainsail : No

Gangway : No  
Davits : No  
Electric windlass : No  
Cockpit awning : No  
Teak deck : No  
Furling genoa : No  
Spinnaker : No

# Main equipment

Stern thruster : No  
AC : No  
Black Water : No  
Tender : No

Bow Thruster : No  
Marine Generator : No  
Hot water : No  
Flaps : No  
Tender Engine : No

# Household appliances

Freezer : No	IceMaker : No
Microwaves : No	Oven : No
Electric stove : No	Gas stove : No
Washing machine : No	Heater : No
TV antenna : No	Dishwasher : No
SAT-TV : No	TV : No

## Various

**Remarks :**

The Tyler 31 is a classic offshore cruiser designed by E.G. van de Stadt and built by the respected Tyler Boat Co. Known for its solid fibreglass hull, fin keel, and masthead sloop rig, the Tyler 31 offers excellent stability and performance for coastal and bluewater sailing. With traditional lines and a reputation for seaworthiness, it's a favourite among sailors seeking a dependable and characterful yacht, well-suited for sailing on the West Coast of Scotland.

Braveheart is available for sale with Euroyachts. This 1981 Tyler 31 is powered by a Volvo Penta diesel engine and features a practical interior with a convertible V-berth, galley, and updated headlining. Well-maintained and ready for adventure, she's ideal for weekend cruising or longer passages. Visit us in Largs to step aboard and see her for yourself.

**Accommodation :**

Forward cabin with wood slats on sides of the hull, a V berth with infill converting it to a double berth, shelving, under-bunk storage and opening overhead hatch. A door leads through to passageway with the heads compartment to port and shelved and hanging storage opposite to starboard. Door leading through to the saloon with bench settees to port and starboard with storage behind and a removable dining table with drop leaves. This table can be stored along the starboard settee front. The port settee front can be slid up and hinges out to give larger berth space. Two pilot berths above and outboard of the settees. The galley is to starboard. The full size sliding chart table is over the quarter-berth to port with instrument readouts to hand. Engine access is under the companionway steps.

Headlining replaced 2023

**Galley**

Neptune 4500 two ring gas hob with oven and grill 2018

Gas safety certificate 2025 (Heatwave)

Cold pressurised water system

Sink

Cool box

Storage

**Heads**

Lavac marine toilet

Sink

Cold pressurised water system

**Inventory :**

**Canvas**

Spray Hood (New 2023)

Mainsail Cover - Stack Pack

Lazy Bag

**Instrumentation**

Engine instruments in cockpit

Two cockpit compasses

Raytheon ST 40 wind in cockpit

Raytheon ST 40 compass in cockpit

Raytheon ST40 bidata (depth, speed) in cockpit

Raytheon ST40 bidata (depth, speed) at chart table

Furuno GPS Navigator GP32 at chart table

Seafarer 3 depth sounder at chart table

Icom IC-M421 DSC VHF radio at chart table

Battery charge meter Radio cassette player

Clock

**Disclaimer**

The Company offers the details of this vessel in good faith but cannot guarantee or warrant the accuracy of this information nor warrant the condition of the vessel. A buyer should instruct his agents, or his surveyors, to investigate such details as the buyer desires validated. This vessel is offered subject to prior sale, price change, or withdrawal without notice.

**Mechanical :**

**Engine and Machinery**

Volvo Penta MD7A 13hp diesel engine with sail drive - serviced 2024 by 360 Marine

Engine has been serviced and winterised annually

Engine hours 1,800

Engine serviced and hoses replaced where required

2020 Sail drive diaphragm replaced 2020

One engine and one domestics battery

Batteries replaced 2017

Solar panel fitted July 2023

**Sails and Rigging**

Standing rigging replaced 22/23

Cruising main sail by Saturn sails and stack pack 2017

Furling bi-radial Genoa 2002 Leitch / Tarbert

Cruising main sail by Saturn Sails 2017

Furling bi-radial genoa 2002

Spinnaker

Lightweight ghoster with wire luff

Number 2 jib

Genoa serviced and washed regularly by Saturn Sails

Quickdrop main sail cover with lazy jacks by Saturn Sails 2017

Old main sail

Two Lewmar 40 self tailing genoa sheet winches

Two Lewmar 8 single speed spinnaker winches

Lewmar 16 self-tailing coach roof winch

Two Lewmar 16 coachroof winches

All lines led aft to cockpit

Single spreader anodised mast and boom  
Spinnaker pole  
New mast cabling + electrics - 2023

**Cockpit**

New Spinlock tiller extension 2023  
Port and starboard stainless steel grabrails at side decks / sprayhood  
Port, starboard and aft lockers  
Teak slatted finish to cockpit seating and sole  
Lines led back from mast to cockpit  
Mast cabling and electric sep 2023

**Deck Gear**

Fin Keel ( Encapsulated )

Stainless steel pulpit and pushpit

Stanchions with twin guard wires - replaced 2023&nbsp;

Twin bow roller

New Bruce anchor with chain and warp

Chain locker

Kedge anchor with 20m chain

Stainless steel bow striker plate 2013

Boarding ladder on transom

Treadmaster deck panels

Various warps and fenders

**Safety Equipment&nbsp;**

Manual bilge pump

Fire blanket

Horseshoe lifebuoy with light

Oscar rescue sling

Pilot gas alarm

CO2 alarm

Gas safety certificate 2025 (Heatwave)

















networkyachtbrokers.com

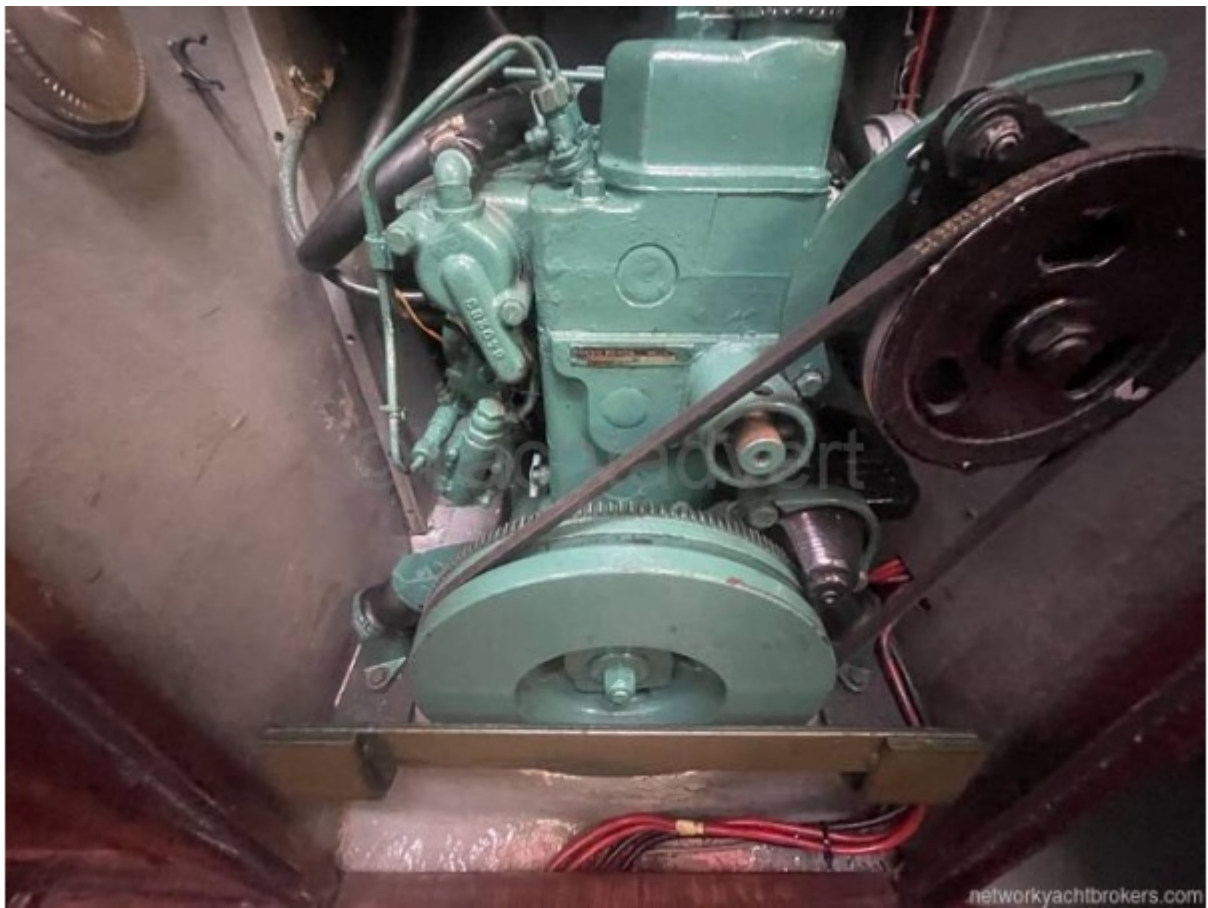












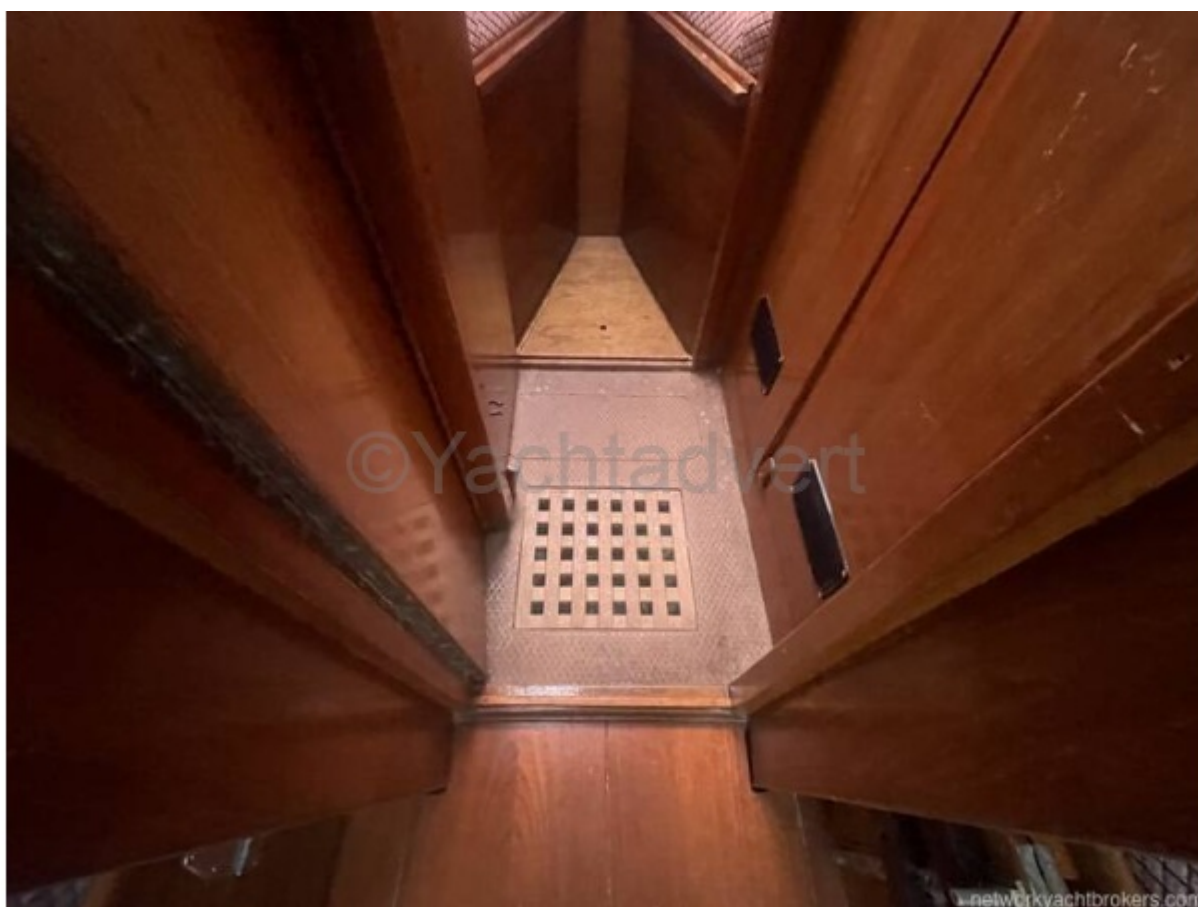




networkyachtbrokers.com



networkyachtbrokers.com











networkyachtbrokers.com





















