



310 Statesman - 1991

<https://www.yachtadvert.com/2095-sealine-310-statesman.html>

19 958 â,- incl vat



General

Year : 1991
Length : 34.00 Ft
Life Raft : No
Leasing in progress : No

Builder : Sealine
Material : GRP
Beam : 11.00 Ft
Area : Chatham Marina, Kent, United Kingdom

Engines

Engine(s) : 2

Engine Brand : Volvo AQ431
Power Unit. (HP) : 205

Facilities

Flybridge : No

Helm : No

Electronics

Autopilot : No

GPS : No

VHF : No

Watermaker : No

Radar : No

Sounder : No

Chartplotter : No

Converter 12/220 : No

Bridge equipment

Hydraulic Gangway : No

Bath platform : No

Winter cover : No

Sprayhood : No

Teak cockpit : No

Furling mainsail : No

Gangway : No

Davits : No

Electric windlass : No

Cockpit awning : No

Teak deck : No

Furling genoa : No

Spinnaker : No

Main equipment

Stern thruster : No

AC : No

Black Water : No

Tender : No

Bow Thruster : No

Marine Generator : No

Hot water : No

Flaps : No

Tender Engine : No

Household appliances

Freezer : No

Microwaves : No

Electric stove : No

Washing machine : No

TV antenna : No

SAT-TV : No

IceMaker : No

Oven : No

Gas stove : No

Heater : No

Dishwasher : No

TV : No

Various

Remarks :

Sealine 310 Statesman for Sale – Located in Kent sold as seen for £17,250

This **1991 Sealine 310 Statesman is a fine example of one of Sealine’s most popular flybridge cruisers, offering a great combination of comfort, performance, and practicality. Presented in good overall condition, this model has benefitted from extensive recent maintenance and investment, making it an attractive choice for anyone seeking a capable and stylish family cruiser.</p><p>Powered by **twin Volvo AQ431 205HP petrol engines, the boat underwent a **full engine rebuild and service in October 2025, with the **outdrives serviced at the same time and **new bellows fitted in April 2024. This work ensures reliable and efficient performance, whether cruising along the coast or enjoying extended weekends afloat.</p><p>On deck, the Sealine 310 Statesman impresses with its **excellent sea-keeping abilities, a **spacious cockpit, and a **well-designed flybridge, providing both comfort and visibility when underway. The large cockpit area is ideal for entertaining or relaxing, with easy access to the swim platform and good storage throughout for gear and equipment.</p><p>Below deck, the interior offers **comfortable accommodation for up to six people, making it ideal for family cruising or hosting friends. The saloon is bright and sociable, with a practical galley, convertible dinette, and ample seating. The forward cabin provides a generous double berth, while the mid-cabin offers additional sleeping quarters, ensuring flexibility for longer stays aboard.</p><p>The specification includes **electric windlass, GPS, and a range of navigational equipment, providing confidence and convenience for both experienced skippers and newcomers alike.</p><p>Overall, this Sealine 310 Statesman represents excellent value for money. It has clearly been well cared for and thoughtfully maintained, ready for immediate enjoyment. Whether you’re looking for a capable cruiser for coastal adventures or a comfortable base for marina life, this boat delivers both performance and comfort in equal measure.</p><p>A **berth at Gillingham Marina may also be available by separate negotiation.</p><p>For further information or to arrange a viewing, please contact our **Kent Office at +44 (0)1634 571605 — early viewing is highly recommended.</p>************************

Accommodation :

This Sealine 310 Statesman has a very roomy feel to her with a large aft cockpit with L shaped seating and table and easy access to the flybridge that can seat 4 in comfort.</p><p>The forward cabin has an offset double berth and ensuite heads with a large hanging locker, vanity surface and additional stowage lockers. It also has a large opening deck hatch</p><p>Aft of the forward cabin is another double berth with hanging locker. Opposite is the heads with marine toilet, washbasin with pressurised hot and cold water, shower and vanity unit.</p><p>Walking up two steps you enter the main saloon with its linear Starboard galley. The galley has a sink with hot and cold water, 2 burner cooker, an oven with grill and 12v Fridge. Opposite the Galley is the U-shaped settee and saloon table that converts into another double berth. The saloon has a very light and airy feel to it. The upholstery, curtains, and carpets have all been replaced over the years. This boat also boasts a safe. It has a JVC Radio/CD player. </p>

Inventory :

Deck Equipment:

- Anchor – with chain- Windlass – Electric- All-over cockpit cover - blue new 2023- Flybridge cover - Blue new 2022- Swim platform- Swim ladder – stainless









www.networkyachtbrokers.com



www.networkyachtbrokers.com





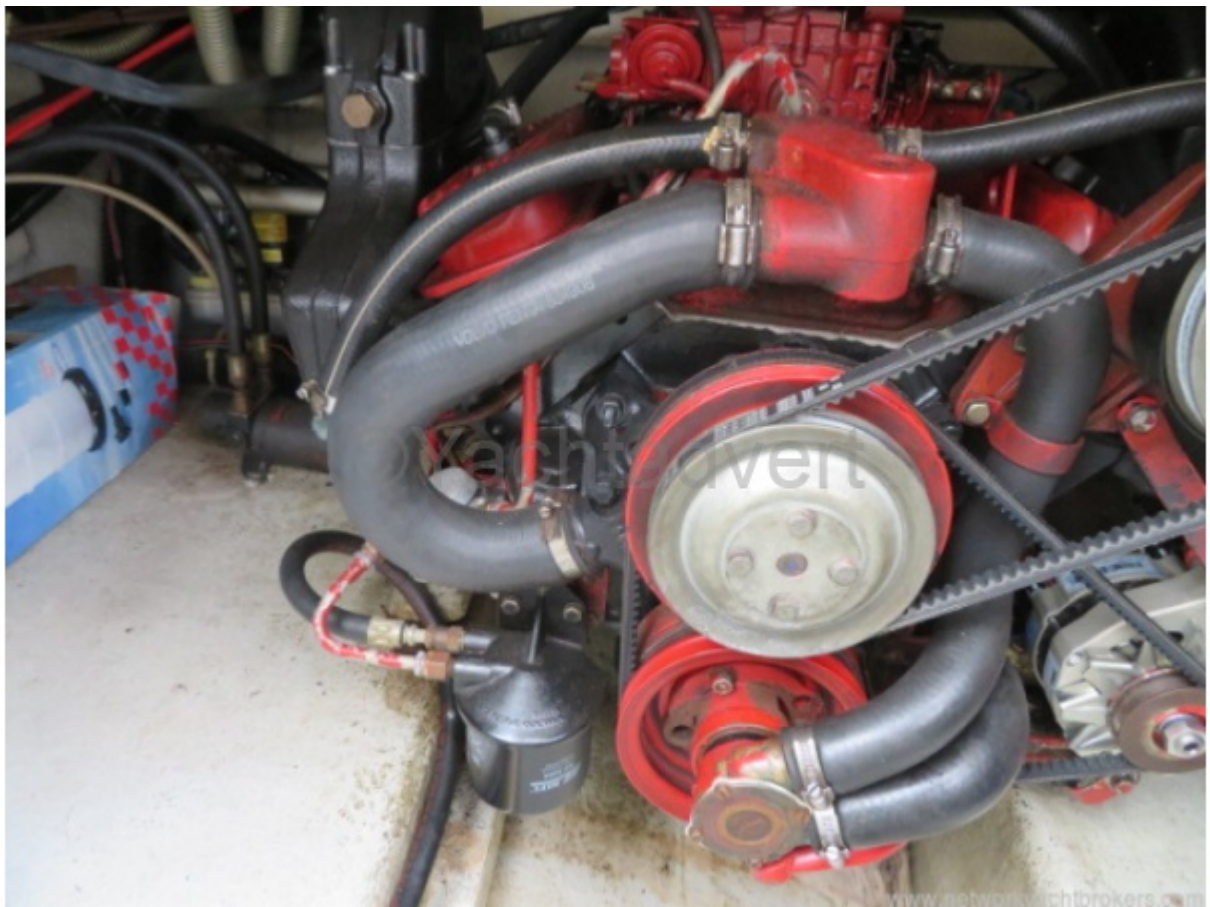


























This vessel is being sold by an ABYA approved broker



www.networkyachtbrokers.com





www.networkyachtbrokers.com



This motorboat is being sold by an ABYA approved broker



www.networkyachtbrokers.com



