



**326 - 2003**

<https://www.yachtadvert.com/2638-hunter-legend-326.html>

**38 291 â,- incl vat**



## General

Year : 2003

Length : 31.00 Ft

Life Raft : No

Leasing in progress : No

Builder : Hunter Legend

Material : GRP

Beam : 10.00 Ft

Area : Plymouth, United Kingdom

## Engines

Fuel : Diesel

Power Unit. (HP) : 18

Engine Brand : Yanmar 2GM2093

Engine(s) : 1

## Facilities

Flybridge : No

Helm : No

---

## Electronics

Autopilot : No

GPS : No

VHF : No

Watermaker : No

Radar : No

Sounder : No

Chartplotter : No

Converter 12/220 : No

---

## Bridge equipment

Hydraulic Gangway : No

Bath platform : No

Winter cover : No

Sprayhood : No

Teak cockpit : No

Furling mainsail : No

Gangway : No

Davits : No

Electric windlass : No

Cockpit awning : No

Teak deck : No

Furling genoa : No

Spinnaker : No

---

## Main equipment

Stern thruster : No

AC : No

Black Water : No

Tender : No

Bow Thruster : No

Marine Generator : No

Hot water : No

Flaps : No

Tender Engine : No

---

# Household appliances

Freezer : No

Microwaves : No

Electric stove : No

Washing machine : No

TV antenna : No

SAT-TV : No

IceMaker : No

Oven : No

Gas stove : No

Heater : No

Dishwasher : No

TV : No

---

## Various

**Remarks :**

The Hunter Legend 326 is a popular cruising yacht, offering a great balance of performance, comfort, and ease of handling. Built in 2003 by Luhrs Marine Limited and designed by Glenn Henderson, this example is well-equipped and ready for use. Her B&R rig with double spreaders and stainless steel mast struts provides a stable, easily managed sail plan, complemented by slab reefing, Furlex headsail furling, and a useful selection of downwind sails. Standing rigging was replaced in 2017. The spacious cockpit features wheel steering and the signature stainless steel stern arch with mainsheet traveller, while an electric windlass and Delta anchor make anchoring simple. Below deck, she offers comfortable accommodation for up to seven, with a large aft cabin, practical galley, and warm teak interior throughout. Powered by a reliable Yanmar diesel engine and equipped with heating, hot water, and a full Raymarine navigation suite, she represents a well-rounded and capable cruising yacht.

**Accommodation :**

Sleeps 7 in two cabins and the saloon

Double V berth in the forward cabin

Saloon with L-shaped seating to starboard (this converts to a double berth)

Single portside settee berth opposite to port

L-shaped galley to starboard

Separate heads with a hand basin, sea water manual toilet and shower

large aft double berth cabin with cupboard storage

Eberspacher Airtronic D2-12V Cabin heating

Teak and holly style cabin sole boards

Teak interior joinery

Blue upholstery in the saloon, cream-patterned upholstery in the cabins

**Forward Cabin:**

Double V-berth

Hanging locker

Storage and open shelving

**Saloon:**

Saloon with port & starboard seating

Single drop-leaf table which converts to a double berth

Under seating forward stowage

Shelving

**Chart Table:**

Aft facing chart table to port with radio, electrical distribution panels and GPS

**Galley:**

L-shaped galley to starboard  
Force 10 Marine three-burner gas hob, oven and grill  
Stainless steel sink  
Toploading 12V refrigerator  
Storage

**Heads:**

Manual Jabasco seawater toilet (automatic detergent dosing)  
Moulded hand basins  
Storage

**Aft Cabin:**

Aft double cabin  
Hanging locker  
Shelving

**Inventory :**

**Navigation Aids:**

In The Cockpit;  
Raymarine C80 chartplotter&nbsp;  
Raymarine ST40 multi  
Raymarine i40 wind speed & direction  
Raymarine ST6002+ autopilot control head  
Raymarine wheel pilot autohelm  
Standard Horizon RAM+ VHF command mic  
Plastimo Olympic 115 steering compass on binnacle  
Raymarine Windex

**At The Chart Table:**

Garmin 128 GPS  
Standard Horizon Querst X, GX1500, DSC, VHF radio  
AIS Receiver

**Ground Tackle:**

Lofrans X1 electric anchor windlass (handheld controller)  
Delta anchor  
30m anchor chain  
30m anchor warp  
Self draining anchor locker  
Single stainless steel bow roller

**Deck Gear:**

Lewmar 30, self tailing, two speed halyard winches on the coachroof  
Lewmar 30, self tailing, two speed sheet winches  
7 x Spinlock rope clutches  
Genoa tracks with adjustable cars  
Lewmar mainsheet traveller on the stern arch  
Stainless steel stern arch  
Stainless steel pulpit, pushpit, stanchions grab bars & boarding gates  
Stainless steel boarding ladder

Pushpit outboard bracket  
3 x opening deck hatches  
Bathing platform with walkthrough transom  
Cockpit && bathing platform lockers  
Forward-facing fixed deck windows in the superstructure and starboard galley portlight (NEW 2019)

**Safety Equipment:**

All Safety equipment listed is included in the sale, but the vendor offers no warranties.  
The purchaser must service the safety equipment, ensure it is appropriate for his purposes, && check the expiry and  
service dates on all items!  
Horseshoe lifebuoy  
Emergency tiller  
Radar reflector  
Navigation Lights (All LED LAMPS)  
Masthead tricolour, anchor && steaming lights  
Automatic electric bilge pump  
Manual bilge pump  
Fire blanket  
Fire extinguishers x 2 (NEW 2021)  
Smoke detectors x 2  
CO2 detector

**Equipment:**

Canvas sprayhood  
Canvas cockpit enclosure  
Canvas halyard bags  
Canvas helm pedestal and cockpit table cover  
Cockpit cushions  
Cockpit table  
Television with TV aerial

**Mechanical :**

**Construction:**  
Built-in 2003 by Luhrs Marine Limited, UK, Portland  
Designed by Glenn Henderson  
White gelcoat finished GRP hull, deck && superstructure  
Blue boot strap line  
Non-slip cockpit sole  
Lead Fin Keel  
Wheel Steering

HIN Number: GBLUH32067F304  
Design Category: B  
Registration Number: SSR135208

**Mechanics:**

Yanmar 2GM20FC, 18HP diesel engine  
SD20 Saildriven transmission  
2-blade folding prop  
Single lever morse engine control on the helm pedestal

**Electrics:**

2 x 12V 100ah domestic batteries (NEW 2024)

12V 60ah engine start battery (NEW 2026)

Mastervolt Chargemaster 12/35-3 mains powered smart battery charger

Sterling Power Products 4-step mains-powered battery charger

Charging from the engine alternator

Galvanic isolator

220V shorepower system

240V sockets in all three cabins

**Tankage:**

Fuel capacity 106 litres in a single polyethylene tank

Freshwater capacity 190 litres&nbsp;in a single polyethylene tank

Holding tank capacity 90 litres&nbsp;in a single polyethylene&nbsp;tank

**Water System:**

Hot && cold pressurised water system

Hot water heated by calorifier with the engine && immersion heater

Electric macerator && pump

Tank gauges for the freshwater && fuel

**Rigging:**

Aluminium Selden spars

B&R rig system with lower stainless steel mast struts

Double spreader rig

Deck stepped mast&nbsp;

Stainless steel standing rigging - replaced 2017

Slab-reefed mainsail

Selden Furlex genoa furling system

Lazy jacks

Spinnaker gear with pole, stowed on the mast

Whisker pole

Selden rod kicker

Lazybag system with lazyjacks

**Sails:**

Mainsai

Genoa

Symmetrical spinnaker with snuffer

Cruising chute with snuffer, by Crusader Sails (NEW 2018)

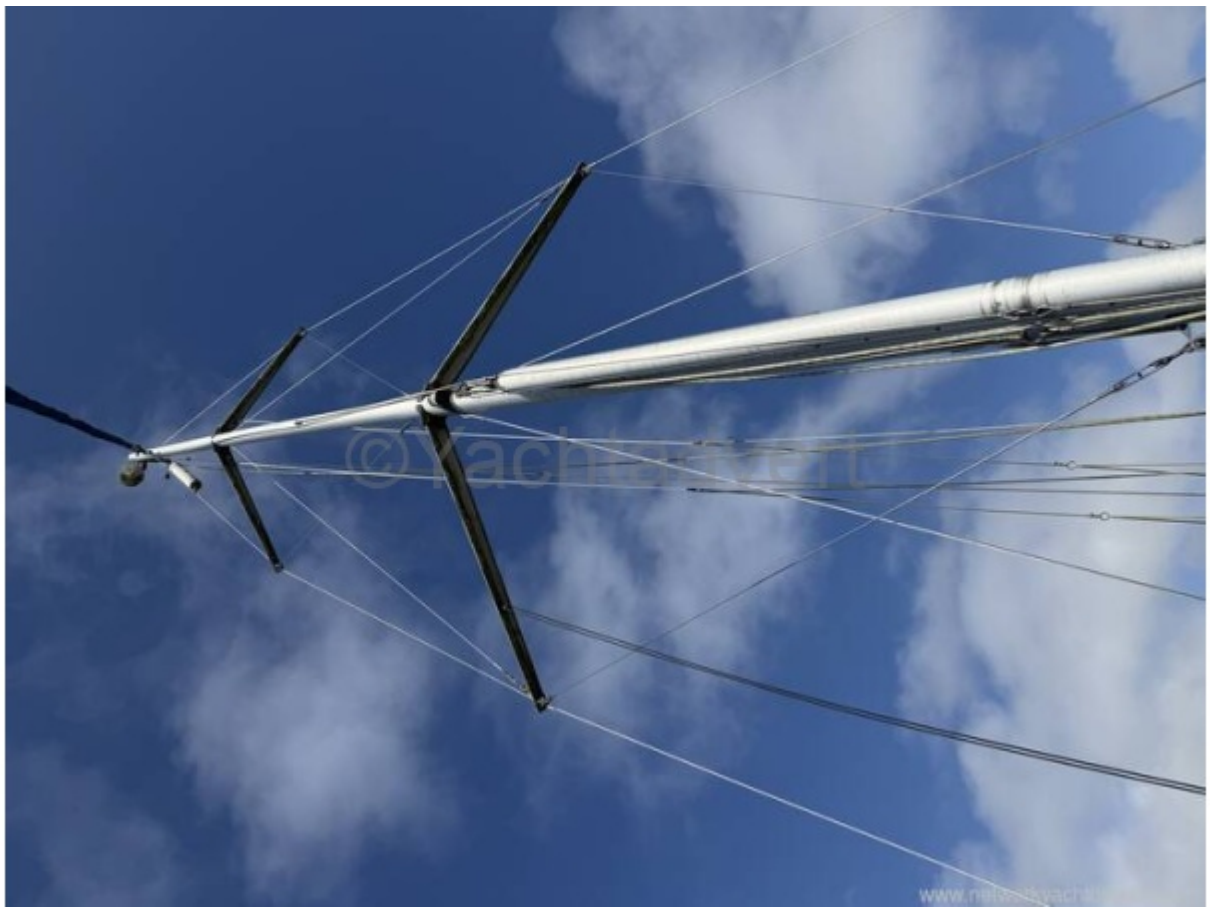
</p></strong>

















[www.networkyachtbrokers.com](http://www.networkyachtbrokers.com)



©Yachtadvert

[www.networkyachtbrokers.com](http://www.networkyachtbrokers.com)







