



Super 30 - 1970

<https://www.yachtadvert.com/744-seamaster-super-30.html>

18 907 â,- incl vat



General

Builder : Seamaster
Material : GRP
Beam : 36.09 Ft
Life Raft : No
Leasing in progress : No

Subtype : Pleasure
Year : 1970
Length : 98.43 Ft
Draft : 0.00 Ft
Area : Rochester, United Kingdom

Engines

Fuel : Diesel
Power Unit. (HP) : 50

Engine Brand : Perkins
Engine(s) : 2

Facilities

Flybridge : No

Helm : No

Electronics

Autopilot : No
GPS : No
VHF : No
Watermaker : No

Radar : No
Sounder : No
Chartplotter : No
Converter 12/220 : No

Bridge equipment

Hydrolic Gangway : No
Bath platform : No
Winter cover : No
Sprayhood : No
Teak cockpit : No
Furling mainsail : No

Gangway : No
Davits : No
Electric windlass : No
Cockpit awning : No
Teak deck : No
Furling genoa : No
Spinnaker : No

Main equipment

Stern thruster : No
AC : No
Black Water : No
Tender : No

Bow Thruster : No
Marine Generator : No
Hot water : No
Flaps : No
Tender Engine : No

Household appliances

Freezer : No
Microwaves : No
Electric stove : No
Washing machine : No
TV antenna : No
SAT-TV : No

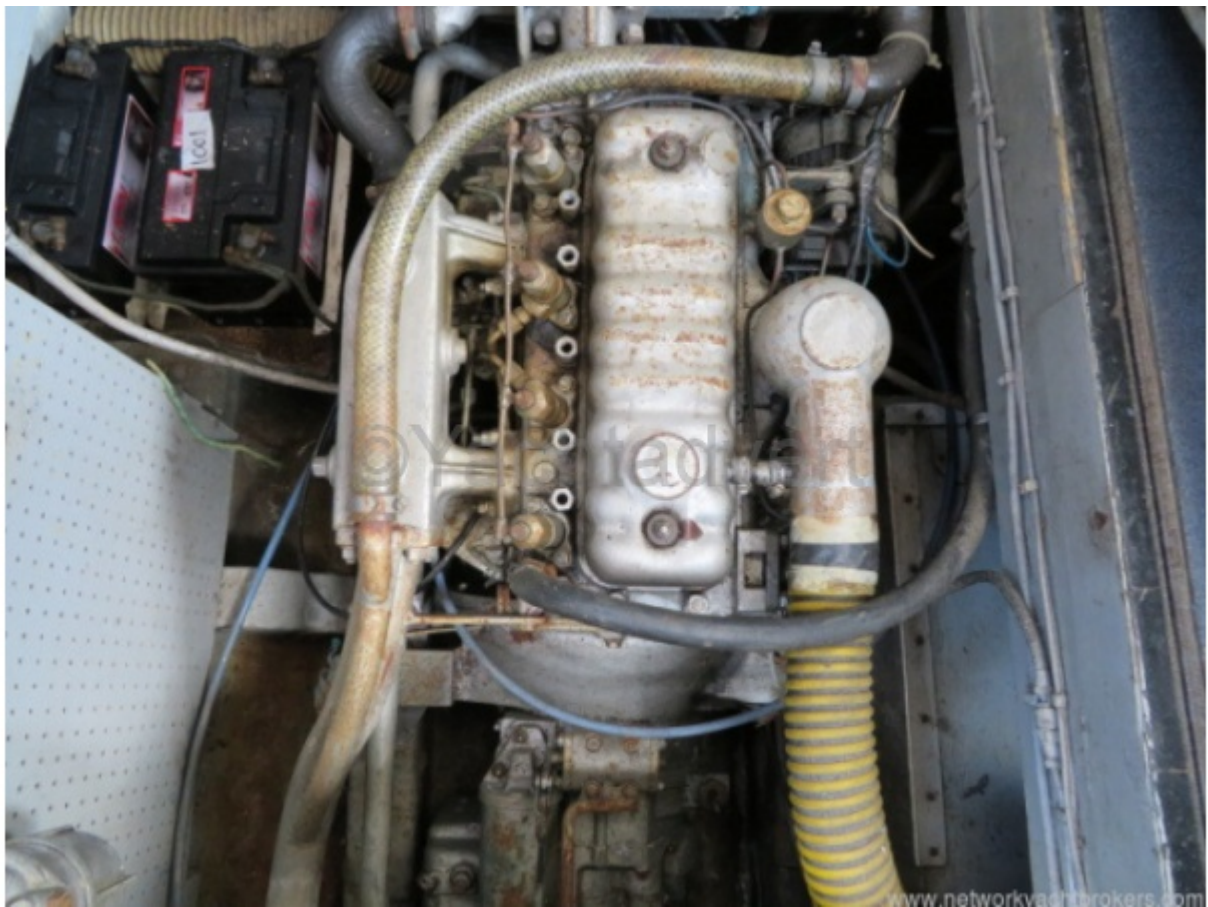
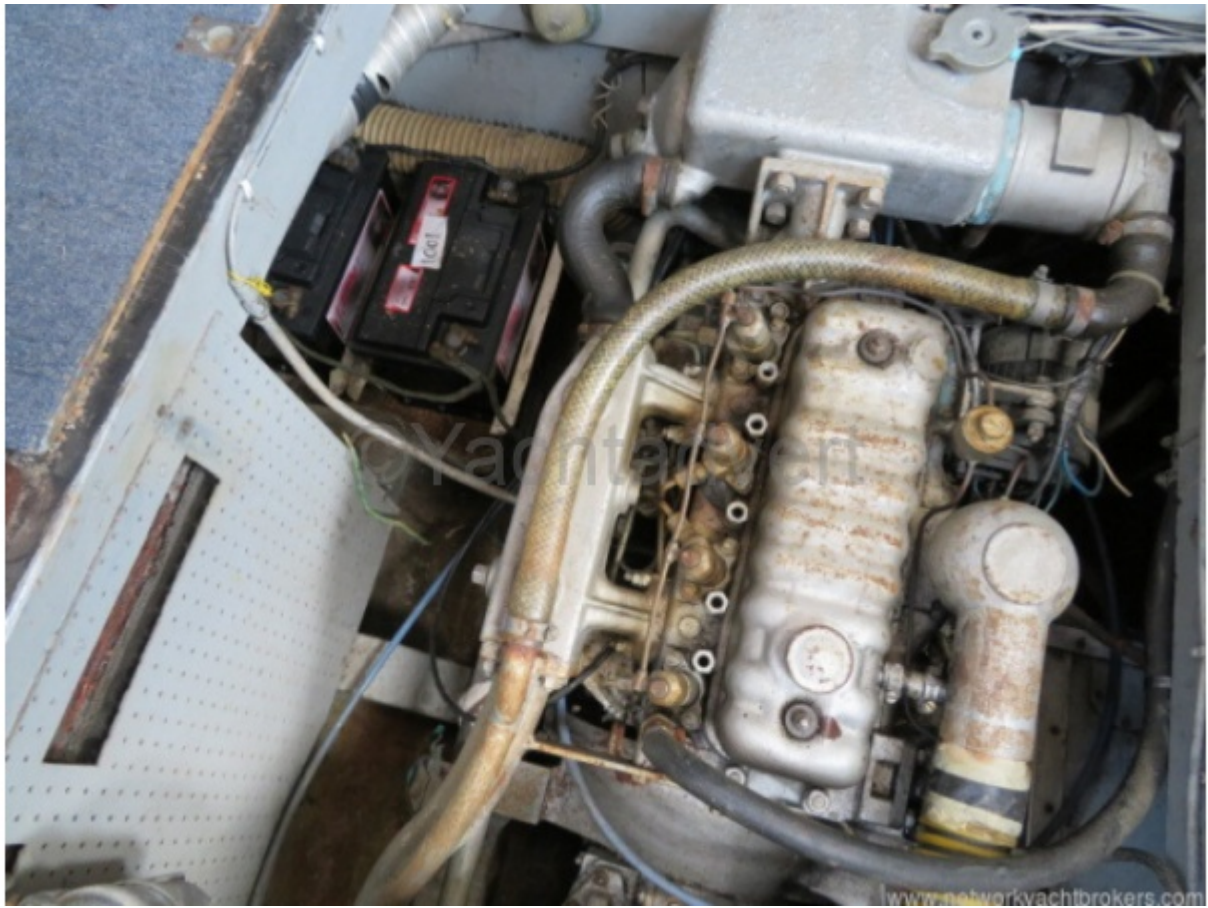
IceMaker : No
Oven : No
Gas stove : No
Heater : No
Dishwasher : No
TV : No

Various

Remarks :
1970 Seamaster Super 30
The Seamaster Super 30, is a popular, and sturdy motor cruiser with spacious and comfortable accommodation for a boat of her size. She has basic equipment onboard, hull polished and anodes changed. Being sold as the owner has not the time to use the boat, some modifications are in progress and need to be finished off. Mooring is available. A 2021 survey report is available on request, recommendations have been completed.</p><p>Please call </p></div><div>Accommodation :<p>The Seamaster Super 30 offers four berths in two cabins. The aft cabin has been converted for more seating will accommodate one person sleeping, with a hanging locker to starboard, dressing table. It has an ensuite heads compartment with a marine toilet (180 litre holding tank) and sink with pressurised cold water.</p><p>In the Wheelhouse the helm is to Port with a folding pilot seat, full instrumentation and controls. There is a bench seat aft to port and starboard with lockers beneath.</p><p>Steps take you down to the saloon with a dinette to port which can easily seat 4 people. and galley opposite. There is a drinks cabinet which forms part of the dinette.</p><p>The galley is equipped with a 2 burner electric hob with grill, with lots of storage lockers. The sink (not fitted) with pressured cold water.</p><p>Forward of the saloon is the forward cabin that has a V berth and a hanging locker for storage of cloths etc.</p>Inventory :<div><div><h3>Navigation Equipment</h3></div><div>Depth - Navico DS150Speed/Log - Navico DS 150VHF Radio - Swift TechDeck level Navigation lights</div></div><div><div><h3>Safety Equipment</h3></div><div>1 x Fire Extinguisher3 x Horseshoe rings1 x Manual Bilge pump1 x Electric bilge pump</div></div><div><div><h3>Deck Equipment</h3></div><div>Large anchor with chainWindlass - manualSprayhood - fixedCanvass cockpit enclosure6 x Fenders3 x Mooring warps</div></div><div><div><h3>Keel/Hull</h3></div><div>Semi displacement with twin rudders</div></div><div><div><h3>History and Construction</h3></div><div><p>She could be used as a live aboard and subject to the marinas approval a live board berth is available or she is ideal for river and coastal cruising. Built in 1970 the Seamaster Super 30 was built by Seamaster to their own design, It has a white semi-displacement GRP Hull and super structure with styling stripes. She has blue painted decks with wooden rubbing strake, tea and teak faced ply interior and wheeled steering.</p></div></div>Mechanical :<div><div><h3>Mechanical Systems</h3></div><div><p>This Seamaster Super 30 is powered by twin Perkins 4108 naturally aspirated diesel engines with shafts leading to three bladed bronze props. She has single lever controls. She has twin fuels tanks storing approximately 360 litres of fuel. She has a maximum speed of approx 14 knots and will cruise at 9 knots. Last out of water maintenance July 2021.</p></div></div><div><div><h3>Electrical Systems</h3></div><div><p>4 x 12V batteries (2 x engine and 2 x domestic) charging from engine alternators and via 240 volt shore power battery charger. There is a 240 volt ring main system with plus in most cabins.</p></div></div>











www.networkvachtbrokers.com



www.networkvachtbrokers.com

