



33 - 1982

<https://www.yachtadvert.com/747-marieholm-33.html>

23 153 â,- incl vat



General

Year : 1982

Length : 32.00 Ft

Draft : 0.00 Ft

Area : Gillingham, United Kingdom

Builder : Marieholm

Material : GRP

Beam : 9.00 Ft

Life Raft : No

Leasing in progress : No

Engines

Fuel : Diesel

Power Unit. (HP) : 27

Engine Brand : Vetus

Engine(s) : 1

Facilities

Flybridge : No

Helm : No

Electronics

Autopilot : No

GPS : No

VHF : No

Watermaker : No

Radar : No

Sounder : No

Chartplotter : No

Converter 12/220 : No

Bridge equipment

Hydraulic Gangway : No

Bath platform : No

Winter cover : No

Sprayhood : No

Teak cockpit : No

Furling mainsail : No

Gangway : No

Davits : No

Electric windlass : No

Cockpit awning : No

Teak deck : No

Furling genoa : No

Spinnaker : No

Main equipment

Stern thruster : No

AC : No

Black Water : No

Tender : No

Bow Thruster : No

Marine Generator : No

Hot water : No

Flaps : No

Tender Engine : No

Household appliances

Freezer : No

Microwaves : No

Electric stove : No

Washing machine : No

TV antenna : No

SAT-TV : No

IceMaker : No

Oven : No

Gas stove : No

Heater : No

Dishwasher : No

TV : No

Various

Remarks :

This 33ft Swedish-built cruising sailboat is ready to take you anywhere in the world. The larger cousin of the famous "Folkboat," the Marieholm 33 was created with the North Sea in mind. Her 3,000-pound encapsulated Long Cast Iron keel helps her track well, even in heavy wind, and she offers an incredibly stable, smooth ride in rough seas. A self-tacking jib, in addition to a full genoa makes the boat easy to sail in rough weather. She is fast and responsive for a long keeler, even in lighter winds. In addition to her noteworthy sea-keeping abilities, her accommodation is roomy and comfortable for a 33-footer which berths 5 and has 6ft of headroom. This yacht is not common, and we recommend an early viewing.

Accommodation :

This yacht offers 5 berths in 2 cabins. Large V-berth forward with lots of under berth storage and hanging lockers. Saloon has a double berth with a quarter berth with lots of storage above and below. The forepeak also provides the space for the heads with marine toilet and washbasin. Hanging storage space is also provided to starboard in this forward area. Diesel cabin heating and a calorifier makes this boat feel very comfortable.

The linear galley to starboard has a stainless- steel sink, with hand pumped cold freshwater, 2 burner Nelson cooker with oven and grill and lots of storage space.

Inventory :

Deck Equipment:

Main Anchor 16kg with chain and warp

Burgundy sail cover, with lazyjacks

Burgundy sprayhood

Mooring warps

Fenders

Gas bottle

Navigation Equipment:

Autopilot Raymarine

Navtex

 Clipper

Fixed VHF Icom

DSC controller Icom

Chartplotter Raytheon

Radar Raymarine

Wind Raymarine

Speed Raymarine

Depth Raymarine

Compass - Silva

Clock barometer

Safety Equipment:

1 x Fire extinguisher

Liferaft 4 person, Manufacture and next service date unknown

Manual bilge pump

Keel:

Long Cast Iron keel

History Construction:

Hull, deck and superstructure moulded in white GRP. Long Cast Iron keel with keel hung rudder with tiller steering. Internal joinery in teak and teak faced plywood. The current owner is selling due to a lack of use.

Marine Insurance:

As one the UK’s largest Brokers with over 700 boats for sale we are able to introduce you to Boat Insurance providers that offer all types of Boat Insurance including insurance for Yachts, Sailing Boats, Motor Cruisers, Narrowboats, Inland Waterway Craft, Barges, Houseboats, Speedboats, Rigid

Inflatable Boats, Waterski Boats, Jet Skis, Personal Watercraft and Dinghies.

Just click on the following link to request an insurance quote for this boat or your current boat:

www.networkyachtbrokerskent.co.uk/marineinsurance/

Mechanical :

Sails & Spars:

Fractional rigged sloop. Seldon deck stepped alloy mast and boom (2001) with slab reefing, with 3 reefs, gas rod kicker, stack pack.

Winches

- 4 x Sheet winches – Anderson S46
- 2 x Halyard winches – Antall ST16, Self-tailing

Sails

- Mainsail – Channon Sails, Dacron, 2004
- Headsail with clewboard – Kemp, self-tacking, 2012
- Spare Headsail

Mechanical Systems:

Powered by a Vetus 27HP M3.09 diesel engine, run for less than 100 hours and located under the companion way steps. The Engine was manufactured between 2001 and 2006 and we believe fitted from new around that time. Features morse throttle controls, shaft driven and indirect cooling. This Marieholm 33 reaches a cruising speed of 5.5Kn and a max speed of 6.5Kn.

Electrical Systems:

3 x 12v batteries, 2 x domestic and 1 x engine start (2018). This yacht's 240 volt systems are shore power connection ring mains, immersion heater and a battery controller. The stern is also fitted with a 25w solar panel.







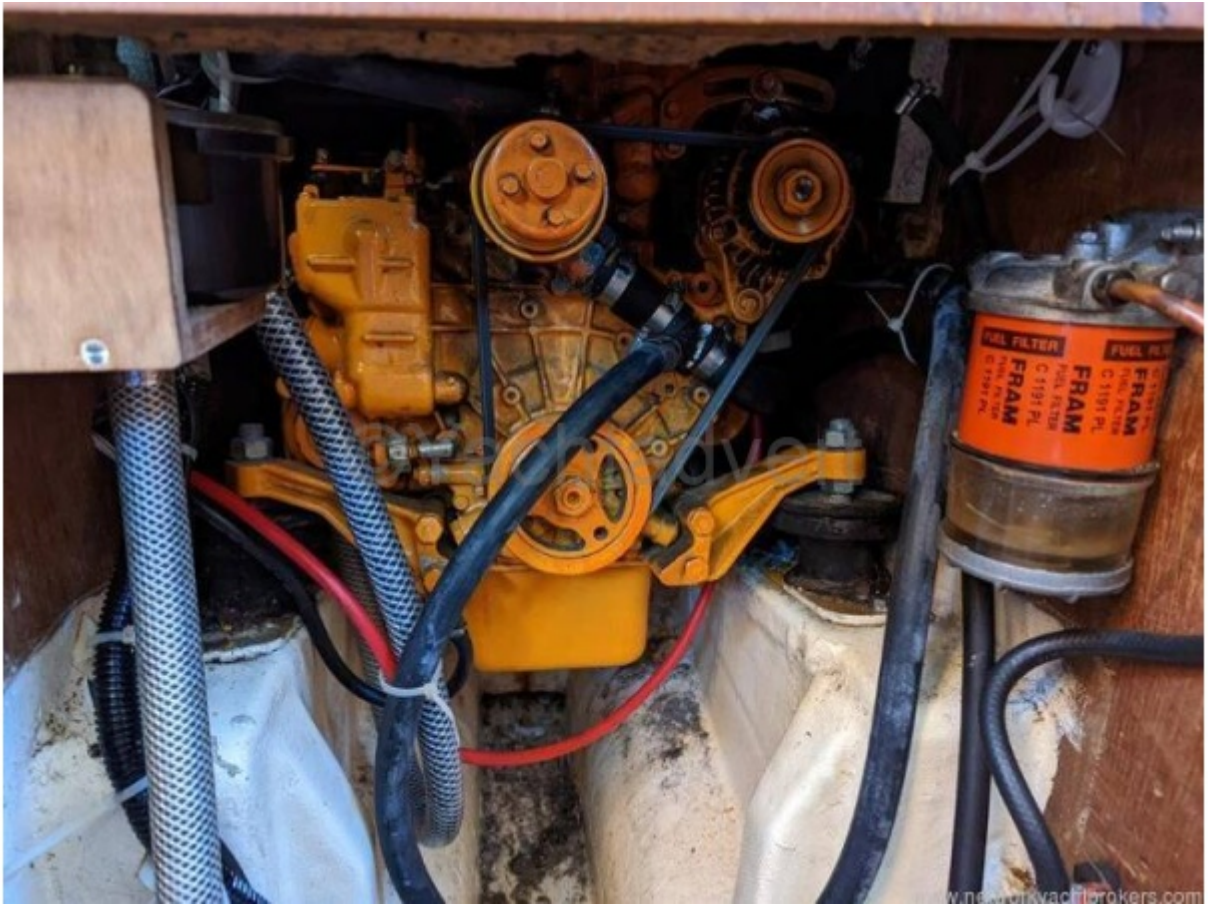
























www.networkyachtbrokers.com



www.networkyachtbrokers.com



www.networkyachtbrokers.com



www.networkyachtbrokers.com







