



## Astrea 42 - 2019

<https://www.yachtadvert.com/819-fontaine-pajot-astrea-42.html>

485 000 EUR incl vat



### General

Year : 2019  
Beam : 24.00 Ft  
Life Raft : No  
Leasing in progress : No

Builder : Fountaine Pajot  
Length : 42.00 Ft  
Draft : 0.00 Ft  
Area : Preveza, Greece

### Engines

Fuel : Diesel  
Power Unit. (HP) : 2

Engine Brand : Volvo Penta  
Engine(s) : 2

## Facilities

Flybridge : No

Helm : No

---

## Electronics

Autopilot : No

GPS : No

VHF : No

Watermaker : No

Radar : No

Sounder : No

Chartplotter : No

Converter 12/220 : No

---

## Bridge equipment

Hydraulic Gangway : No

Bath platform : No

Winter cover : No

Sprayhood : No

Teak cockpit : No

Furling mainsail : No

Gangway : No

Davits : No

Electric windlass : No

Cockpit awning : No

Teak deck : No

Furling genoa : No

Spinnaker : No

---

## Main equipment

Stern thruster : No

AC : No

Black Water : No

Tender : No

Bow Thruster : No

Marine Generator : No

Hot water : No

Flaps : No

Tender Engine : No

---

# Household appliances

Freezer : No

Microwaves : No

Electric stove : No

Washing machine : No

TV antenna : No

SAT-TV : No

IceMaker : No

Oven : No

Gas stove : No

Heater : No

Dishwasher : No

TV : No

## Various

**Remarks :**

**NEW ARRIVAL- More details to**

follow

**Fountaine Pajot Astrea 42 QUATUAR (4 Cabin and 4 bathroom)**

Comfort package.

The Fountaine Pajot Astrea 42 QUATUAR is a 2019 catamaran perfect for

those who love sailing in style. With a sleek design and a cleverly spacious interior in its 12.58-meter frame, it's great for

bringing people together on the water. Enjoy the sea with family and friends in comfort and luxury.

This catamaran features four elegant double cabins, each with its own bathroom, providing privacy for everyone. the

QUATUAR version of the Astrea 42 boasts four double cabins and four ensuite bathrooms, offering ample space and

privacy for all on board.

Key features include a rooftop double seat at the helm station adjacent to a sunbathing

area, a large cockpit with a built-in griddle, and a footbridge that transforms into a delightful beach club. The

360° open lounge, bathed in natural light, adds to the vessel's inviting atmosphere, complemented by the

refined aesthetics of the cabins and the sizable Italian-style bathrooms. , It's equipped with a unique rooftop seating near

a sunbathing spot, a spacious cockpit for outdoor enjoyment, and a lounge area filled with natural light. Every detail of

the Astrea 42 is crafted for an outstanding sailing experience.

**HIGHLIGHTS:**

**4 Double Cabins & 4 Ensuite Bathrooms:** Ideal for family or group cruising, providing privacy and comfort.

**Comfort Package:** Enhanced amenities for a more luxurious experience.

**Generator & Hydraulic Gangway:** Ensures power availability and easy access to and from the yacht.

**"DockMate" Easy Docking System:** Simplifies mooring and docking operations.

**Air conditioning:** 28 K BTU

**Water Maker:** 180 Liters per hour

**Under water lighting**

**Electric Multi function table in Saloon**

**Spacious Interiors:** Despite the compact overall length of 12.58 meters.

**Rooftop Double Seat at Helm Station:** Close to a sunbathing area, perfect for enjoying sailing together.

**Large Cockpit:** Ideal for outdoor dining and relaxation.

**Electric Platform /Footbridge** as Beach Club: Enhances the enjoyment of the sea swimming and also used for dingy lift and store.

**360° Open Lounge:** With large windows allowing ample sunlight.

**Italian-Style Bathrooms:** adding a touch of elegance.

**Overall Length:** 12.58 meters, offering a balance of size and agility.

**Fuel Capacity:** Approximately 470 liters, for extended cruising range.

**Accommodation :**

**Accommodations**

**Single Berths:** 1

**Double Berths:** 4

**Cabins:** 4

**Heads:** 4

**Inventory :**

**Mechanical :**

**MECHANICAL**

**2019 Volvo Penta D2 50 F (Engines 2)**

**Fuel Type:** Diesel

**Drive Type:** Sail Drive

**Power:** 50 hp

**Propeller Type:** 3 Blade

**Propeller Material:** Alloy

**Dimensions**

**LOA:** 12 m 58 cm

**Beam:** 7 m 20 cm

**Max Draft:** 1 m 25

cm

- Seating
- Liferaft Capacity: 10

Accommodations

- Single Berths: 1
- Double Berths: 4
- Cabins: 4
- Heads: 4

Covers

Bimini Top: Hard top

Spray Hood

Lazy Bag

Cockpit Cover: Full Cockpit tent enclosure

Lazyjacks

Electrical

Equipment

	Shore	Power
Inlet		
Generator		
Inverter		

Electronics

- Depthsounder:
- Radar:
- Log-Speedometer:
- Wind Speed and Direction:
- Repeater(s):
- Navigation Center:
- Plotter: 3 x Garmin Smart Cruising 8410 GMI20
- Autopilot:
- Compass:
- GPS:
- Cockpit Speakers:
- VHF: Also 2nd Garmin at Helm station

Inside Equipment

- Electric Bilge Pump:
- Oven:
- Manual Bilge Pump:
- Air Conditioning:
- Electric Head: (4)
- Hot Water:
- Refrigerator:
- Fresh Water Maker:
- Sea Water Pump:
- Battery Charger:

Outside Equipment/Extras

- Teak Cockpit: Synthetic
- Cockpit Shower:
- Outboard Engine Brackets:
- Gangway: Electric Platform
- Davit(s):
- Hydraulic Gangway:
- Liferaft:
- Cockpit Cushions:
- Cockpit Table:
- Swimming Ladder:
- Rigging:
- Steering Wheel:
- Electric Winch:

Sails

Fully Battened Mainsail

Furling Mainsail

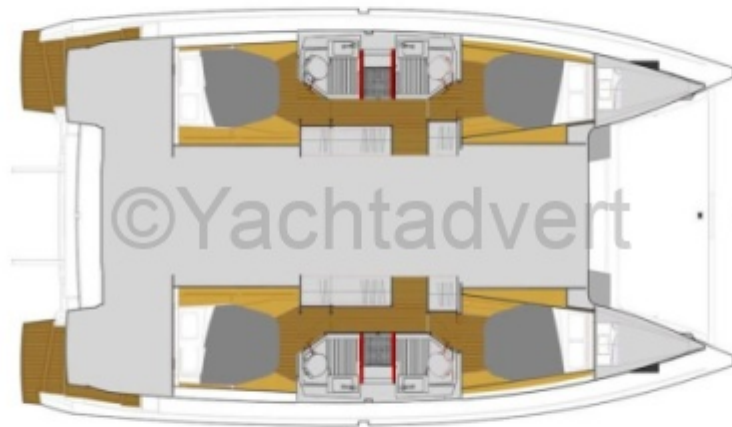
Gennaker/Cruising Spinnaker

Genoa

Furling Genoa







Sister ship





**NETWORK**  
YACHT BROKERS



**NETWORK**  
YACHT BROKERS













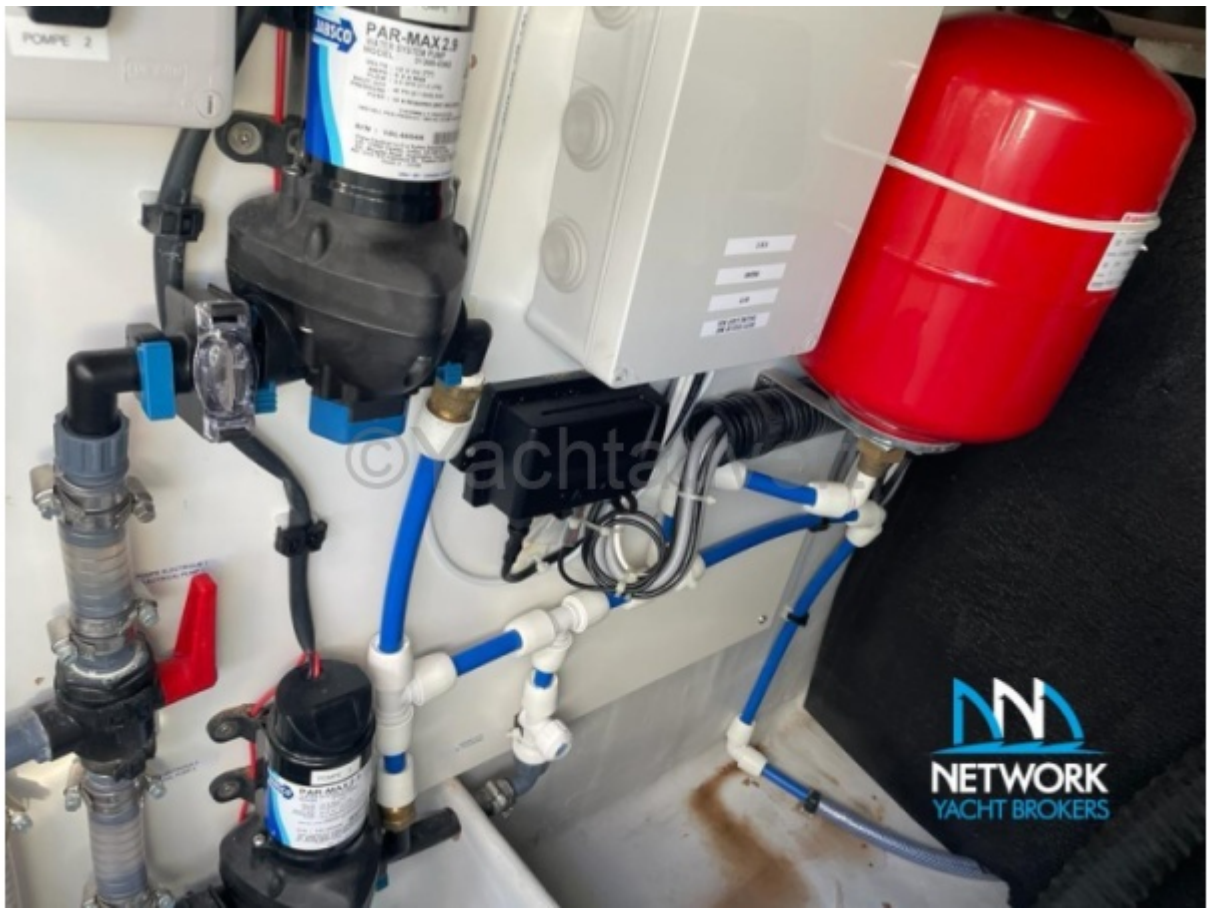
Sister ship













Sister ship

































