



2565 Window Express - 2010

<https://www.yachtadvert.com/863-regal-2565-window-express.html>

45 855 â,- incl vat



General

Builder : Regal
Material : GRP
Beam : 9.00 Ft
Area : Poole, United Kingdom

Subtype : Pleasure
Year : 2010
Length : 28.00 Ft
Life Raft : No
Leasing in progress : No

Engines

Engine(s) : 1

Engine Brand : Mercruiser
Power Unit. (HP) : 260

Facilities

Flybridge : No

Helm : No

Electronics

Autopilot : No

GPS : No

VHF : No

Watermaker : No

Radar : No

Sounder : No

Chartplotter : No

Converter 12/220 : No

Bridge equipment

Hydrolic Gangway : No

Bath platform : No

Winter cover : No

Sprayhood : No

Teak cockpit : No

Furling mainsail : No

Gangway : No

Davits : No

Electric windlass : No

Cockpit awning : No

Teak deck : No

Furling genoa : No

Spinnaker : No

Main equipment

Stern thruster : No

AC : No

Black Water : No

Tender : No

Bow Thruster : No

Marine Generator : No

Hot water : No

Flaps : No

Tender Engine : No

Household appliances

Freezer : No	IceMaker : No
Microwaves : No	Oven : No
Electric stove : No	Gas stove : No
Washing machine : No	Heater : No
TV antenna : No	Dishwasher : No
SAT-TV : No	TV : No

Various

Remarks :
2010 Regal 2565 Window express fitted with the Mercruiser 5.0MPI petrol engine with Bravo 3 outdrive with circa 640 hours. "RaRa" is a good example of these popular 4 berth family cruisers. She has been well looked after and maintained by her current owner having been fully serviced (engine & outdrive) in January 2025, she has also just had a new bow thruster fitted along with a new electric windlass. New interior carpet has been added along with SeaDeck soft decking to the cockpit and bathing platform. She has a full cockpit enclosure, GPD chart plotter, VHF, hot and cold water, tonneau cover etc etc.

Accommodation :
Accommodation
4 berth in 2 cabins
Convertible dinette to double berth
Double mid cabin
New carpets
HEADS:
New toilet
Shower
Sink
Hot and cold water
GALLEY:
Microwave
Sink
Hob
Refrigerator
Inventory :
Deck Equipment
Electric windlass with anchor and chain
Clean hull as not antifouled, dry stack stored
Warps and fenders
Manufacturer Provided Description
There are more cubic feet of livable interior space in this 25 Express than in Express Cruisers two feet longer. It's lighter, brighter and airier than any conventional trailerable cruiser. The large, windowed main cabin offers a comfortable dining area that converts to an oversized berth. There's a full standup head compartment, and the galley is complete with stove, sink with pressurized water, refrigerator, microwave and Corian countertop. The mid-cabin comfortably accommodates children or adults in the large berth. All this in a 25-foot trailerable cruiser that offers the highest level of standard equipment, equipment you would pay for as options on similar cruisers. The stand-up head compartment contains an integrated sink with hot and cold pressurized water, generous storage and a standard VacuFlush head.
Disclaimer
The Company offers the details of this vessel in good faith but cannot guarantee or warrant the accuracy of this information nor warrant the condition of the vessel. A buyer should instruct his agents, or his surveyors, to investigate such details as the buyer desires validated. This vessel is offered subject to prior sale, price change, or withdrawal without notice.
customContactInformation
+44(0)1202 669554
poole@yachts.co
Mechanical :
Single Mercruiser 5.0 MPi 260hp
Bravo 3 outdrive
Engine and outdrive serviced 2025
Stainless steel Duo prop
640 engine hours
Shore power
New 12v batteries







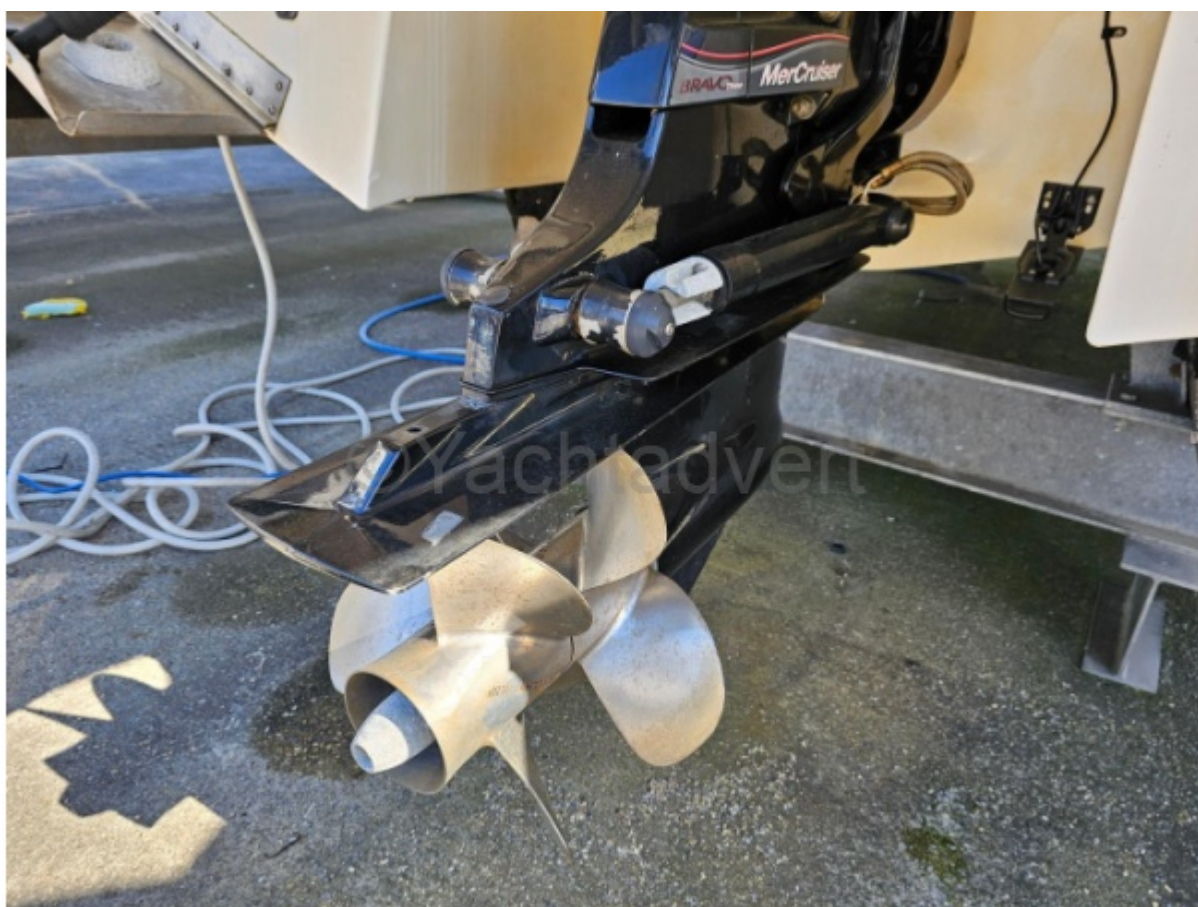
























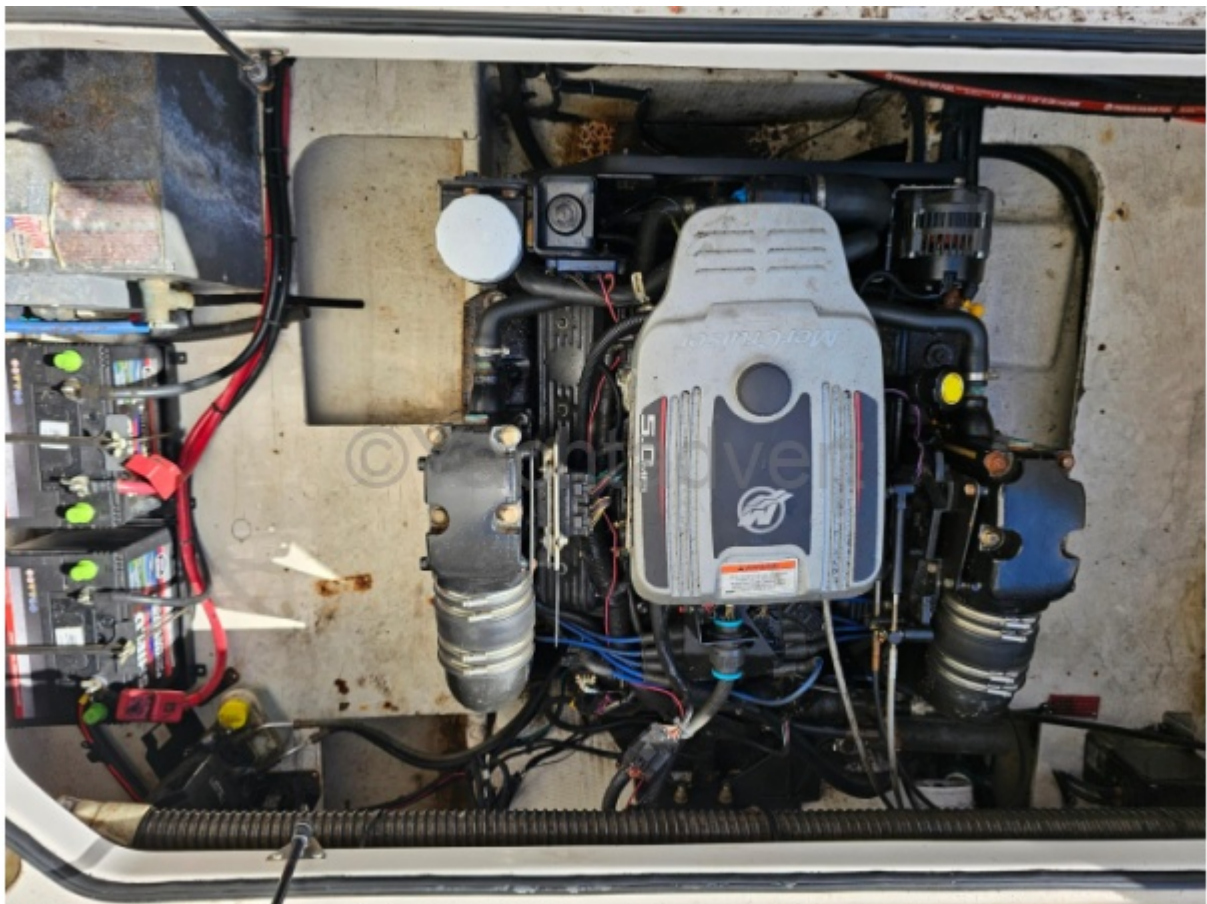






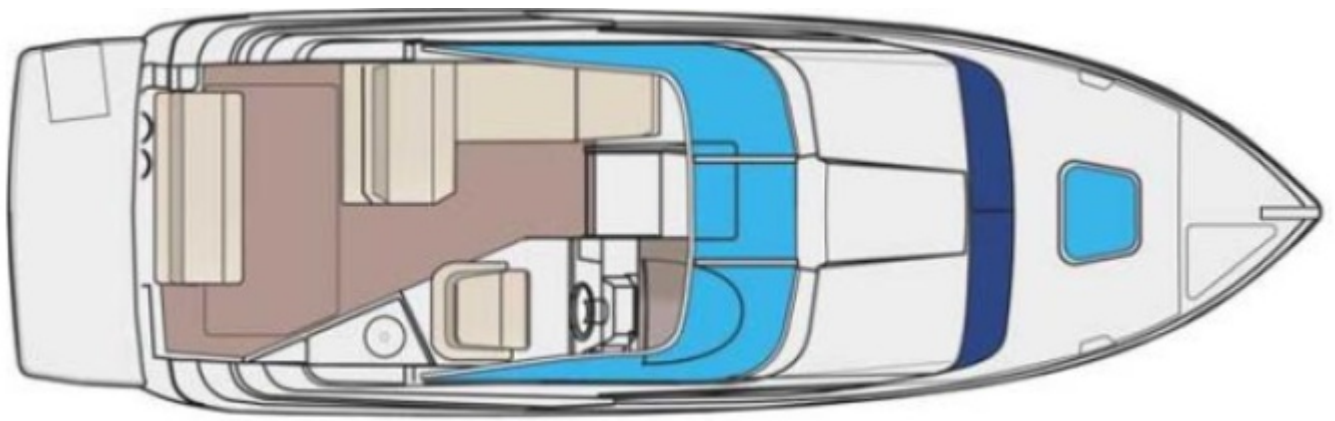












©Yachtadvert





